

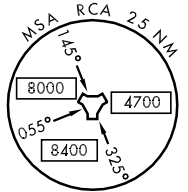
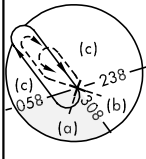
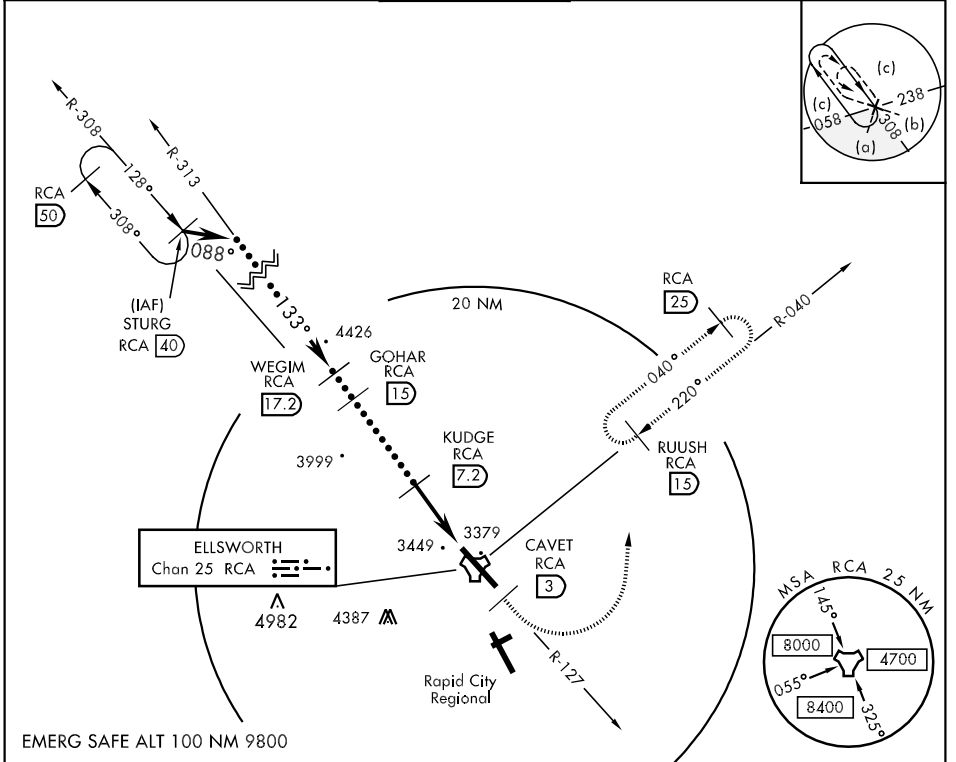
TACAN RCA Chan 25	APCH CRS 133°	Rwy Idg 13,497 TDZE 3276 Arpt Elev 3276	JAL-343 [USAF]	ELLSWORTH AFB (KRCA)
----------------------	------------------	---	----------------	----------------------

\* When ALS inop, increase CAT CDE vis ½ mile.  
 \*\* CAT E circling restricted to 28th BW aircraft only; 28th BW aircraft will remain within Class D airspace.



MISSED APPROACH: Track outbound RCA R-127 to 3 DME (CAVET), then turn left to join RCA R-040 outbound to (RUUSH) RCA 15 DME and hold. Maintain 6000.

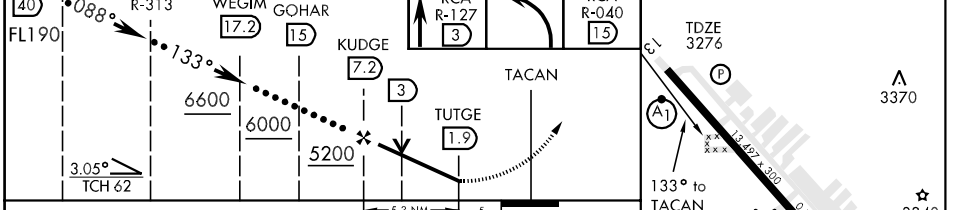
ATIS ★ 120.625 269.9	ELLSWORTH APP CON 119.5 259.1	ELLSWORTH TOWER ★ 126.05 253.5	GND CON 121.8 275.8	ASR
-------------------------	----------------------------------	-----------------------------------	------------------------	-----



NC-1, 22 OCT 2009 to 19 NOV 2009

NC-1, 22 OCT 2009 to 19 NOV 2009

STURG R-308 FL190	Intcp R-313 088	WEGIM 17.2	GOHAR 15	KUDGE 7.2	CAVET RCA R-127 3	6000	RUUSH RCA R-040 15	ELEV 3276
----------------------	--------------------	---------------	-------------	--------------	----------------------	------	-----------------------	-----------



CATEGORY	C	D	E
S-13 *	3820/50 544 (600-1)	3820/60 544 (600-1½)	3820-1½ 544 (600-1½)
CIRCLING **	3880-1¾ 604 (700-1¾)	3880-2 604 (700-2)	4040-2¾ 764 (800-2¾)
S-ASR 13 *	3820/50 544 (600-1)	3820/60 544 (600-1½)	3820-1½ 544 (600-1½)

