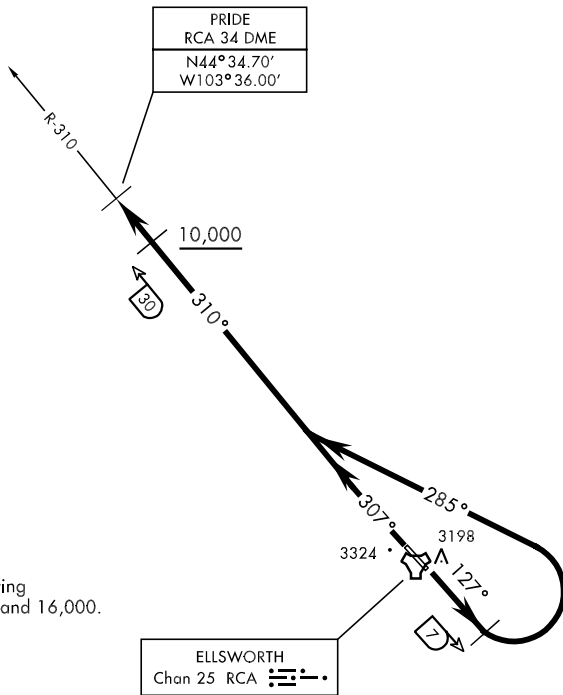


ELLSWORTH-ONE DEPARTURE (RCA1•RCA) SHL-343 [USAF] RAPID CITY, SOUTH DAKOTA

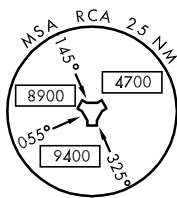
Rwy	Knots	60	120	180	240	300	360
31	V/V(fpm)	240	480	720	960	1200	1440

ATIS ★ 120.625 269.9
 GND CON
 121.8 275.8
 ELLSWORTH TOWER ★
 126.05 253.5
 ELLSWORTH DEP CON
 119.5 289.4
 DENVER CENTER
 127.95 338.2
 ELLSWORTH APP CON
 119.5 259.1

ATC Climb Rate to 10,000



CAUTION: Traffic transiting IR-492 between 10,000 and 16,000.



Radar required for Rwy 13 departure.

DEPARTURE ROUTE DESCRIPTION

TAKE-OFF RWY 13: Track 127° to RCA 7 DME. Turn left track 285° to intercept RCA R-310, outbound to PRIDE. Cross RCA 30 DME at or above 10,000.

TAKE-OFF RWY 31: Track 307° to intercept RCA R-310, outbound to PRIDE. Cross RCA 30 DME at or above 10,000.