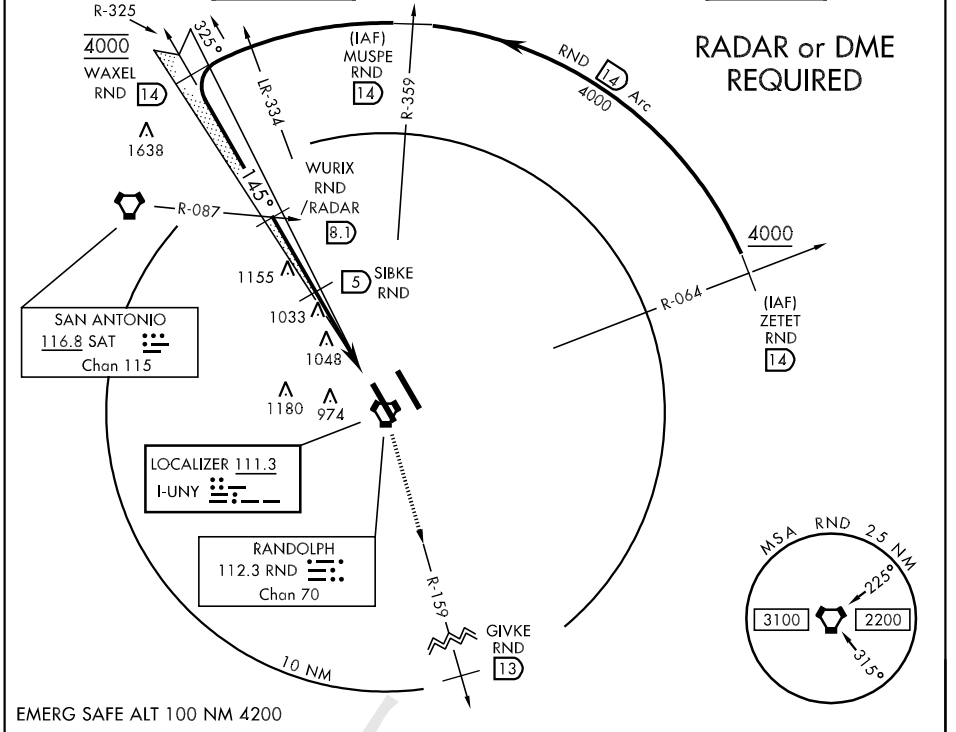


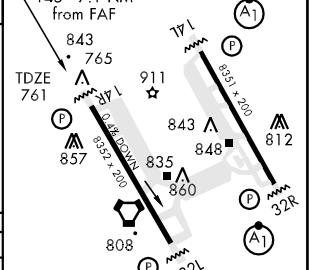
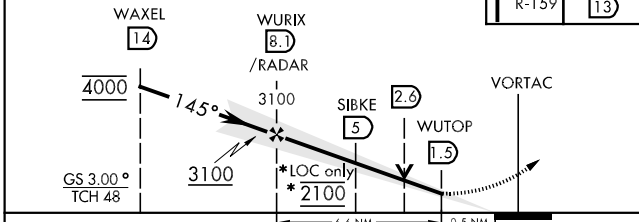
LOC I-UNY 111.3	APCH CRS 145°	Rwy Idg TDZE Arpt Elev 8352 761 761	AL-341 [USAF]	RANDOLPH AFB (KRND)
---------------------------	-------------------------	---	---------------	---------------------

**** Circling not authorized NE of Rwy 14R-32L.** MISSED APPROACH: Climb to 3000 out RND VORTAC R-159 to 13 DME (GIVKE). Expect ATC instructions.

ATIS ★ 290.525	SAN ANTONIO APP CON 128.05 318.1	RANDOLPH TOWER ★ 128.25 294.7	RANDOLPH GND CON 119.65 275.8	CLNC DEL (RWY 14L-32R) 338.35	HANGOVER ATIS ★ 327.8	HANGOVER TOWER ★ 120.5 291.1	HANGOVER GND CON 124.75 353.75
--------------------------	--	---	---	---	---------------------------------	--	--



3000 RND R-159	GIVKE RND 13	ELEV 761
----------------	--------------	----------



CATEGORY	A	B	C	D	E
S-ILS 14R	961/40		200	(200-34)	
S-LOC/DME 14R	1300/50	539 (600-1)	1300-1½ 539 (600-1½)	1300-1¾ 539 (600-1¾)	1300-2 539 (600-2)
CIRCLING **	1300-1 539 (600-1)		1300-1½ 539 (600-1½)	1360-2 599 (600-2)	1800-3 1039 (1100-3)

FAF to MAP 6.6 NM					
Knots	60	90	120	150	180
Min:Sec	6:36	4:24	3:13	2:38	2:12

SC-3, 22 OCT 2009 to 19 NOV 2009

SC-3, 22 OCT 2009 to 19 NOV 2009