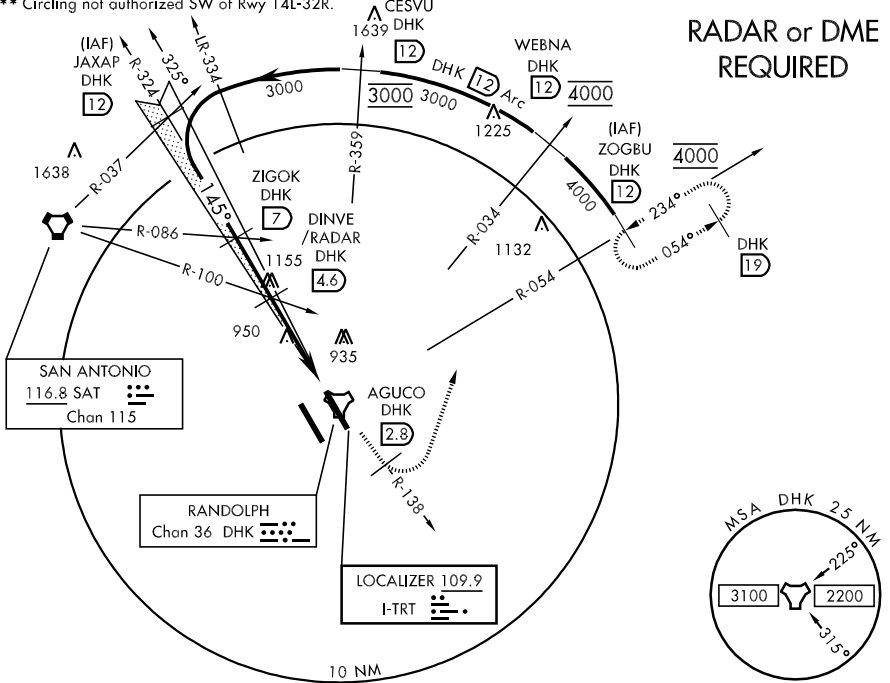


| | | | | |
|--|--|---|---|--|
| LOC I-TRT 109.9 | APCH CRS 145° | Rwy Idg TDZE Arpt Elev 8351 742 761 | AL-341 [USAF] | RANDOLPH AFB (KRND) |
| * When ALS inop, increase RVR CATS AB to 40 and vis to ¾ mile. ** When ALS inop, increase RVR CATS AB to 50 and vis to 1 mile, CAT C to 60 and vis to 1¼ miles, CAT D vis to 1½ miles, Cat E vis to 1¾ miles. | | | | ALSF-1 |
| MISSED APPROACH: Climb to 3000 out DHK TACAN R-138 to AGUCO. Then turn left intercept DHK R-054 to ZOGBU and hold. | | | | |
| ATIS ★ 290.525 | SAN ANTONIO APP CON 128.05 318.1 | RANDOLPH TOWER ★ 128.25 294.7 | RANDOLPH GND CON 119.65 275.8 | CLNC DEL (RWY 14L-32R) 338.35 |
| HANGOVER ATIS ★ 327.8 | | HANGOVER TOWER ★ 120.5 291.1 | | HANGOVER GND CON 124.75 353.75 |

*** Circling not authorized SW of Rwy 14L-32R.

RADAR or DME REQUIRED



SC-3, 22 OCT 2009 to 19 NOV 2009

SC-3, 22 OCT 2009 to 19 NOV 2009

EMERG SAFE ALT 100 NM 4200

| | | | | | | | | | | | | | |
|------------------------|---|--------------------------------|---------------|--------------|--------------|----------------------------|----------|------|------|------|------|-----|-----|
| SAT R-037 JAXAP DHK 12 | VGSI TCH is more than 3' from procedure TCH | 3000 AGUCO DHK R-138 | DHK R-054 | ZOGBU DHK 12 | ELEV 761 | 145° 4.1 NM from FAF | TDZE 742 | 812 | 835 | 848 | 860 | 872 | 882 |
| SAT R-086 ZIGOK DHK 7 | | SAT R-100 DINVE DHK 4.6 /RADAR | TACAN | | | | | | | | | | |
| 3000 | 2200 | 2100 | JEPGA DHK 1.9 | 1 | | | | | | | | | |
| GS 3.00° TCH 41 | | | 3.6 NM | 0.5 NM | | | | | | | | | |
| CATEGORY | A | B | C | D | E | HIRL all Rwy | | | | | | | |
| S-ILS 14L* | 942/24 | 200 (200-½) | 942/40 | 200 (200-¾) | | ALS Rwy 14L nstd len 2100' | | | | | | | |
| S-LOC/DME 14L ** | 1220/40 | 478 (500-¾) | 1220/50 | 1220/60 | 1220-1½ | FAF to MAP 3.6 NM | | | | | | | |
| CIRCLING *** | 1220-1 | 459 (500-1) | 1220-1½ | 1320-2 | 1800-3 | Knots | 60 | 90 | 120 | 150 | 180 | | |
| | | | 459 (500-1½) | 559 (600-2) | 1039(1100-3) | Min:Sec | 3:36 | 2:24 | 1:48 | 1:26 | 1:12 | | |