

APCH CRS	Rwy Idg	4250
024°	TDZE	10
	Arpt Elev	10

AL-339 [USN]

QUANTICO MCAF (TURNER FIELD) (KNYG)

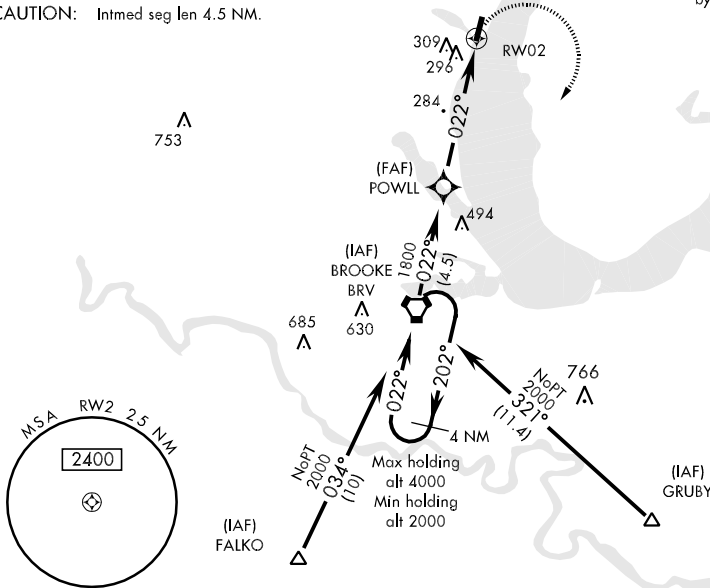
⚠ * Circling not authorized W of Rwy 2-20.
 Procedure NA at night when VGSi inop.
 Procedure TCH not coincident with PAPI's.

MISSED APPROACH: Climbing right turn direct BRV VORTAC and hold.

ATIS ★ 263.15	POTOMAC APP CON 124.65 306.92	QUANTICO TOWER ★ 118.6 360.2	GND CON 121.75 340.2	ASR/PAR
-------------------------	-----------------------------------------	----------------------------------------	--------------------------------	---------

For uncompensated Baro-VNAV systems, LNAV/VNAV
 NA below -15°C (5°F) or above 43°C (110°F).
 DME/DME RNP-0.3 NA.
 LNAV/VNAV military use only.
 Max airspeed IAF to FAF 220 KIAS.
 CAUTION: Intmed seg len 4.5 NM.

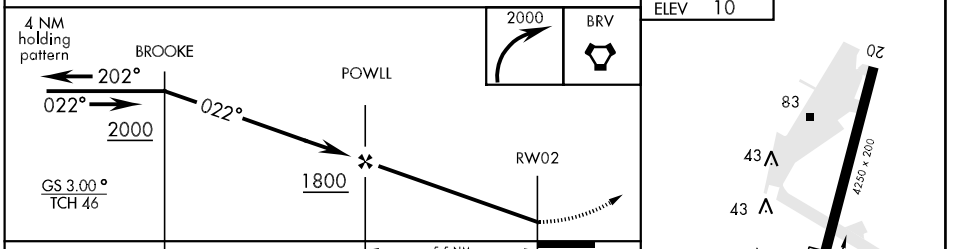
CAUTION: 20:1 visual surface penetrated by terrain.



NE-3, 22 OCT 2009 to 19 NOV 2009

NE-3, 22 OCT 2009 to 19 NOV 2009

EMERG SAFE ALT 100 NM 6500



CATEGORY	A	B	C	D
LNAV/VNAV DA	470-1 1/2 460 (500-1 1/2)			
LNAV MDA	560-1 550 (600-1)	560-1 1/2 550 (600-1 1/2)		560-1 3/4 550 (600-1 3/4)
CIRCLING *	560-1 1/2 550 (600-1 1/2)	700-2 1/4 690 (700-2 1/4)		
S-PAR 2	262-1 252 (300-1)		GS 3.0°	

