

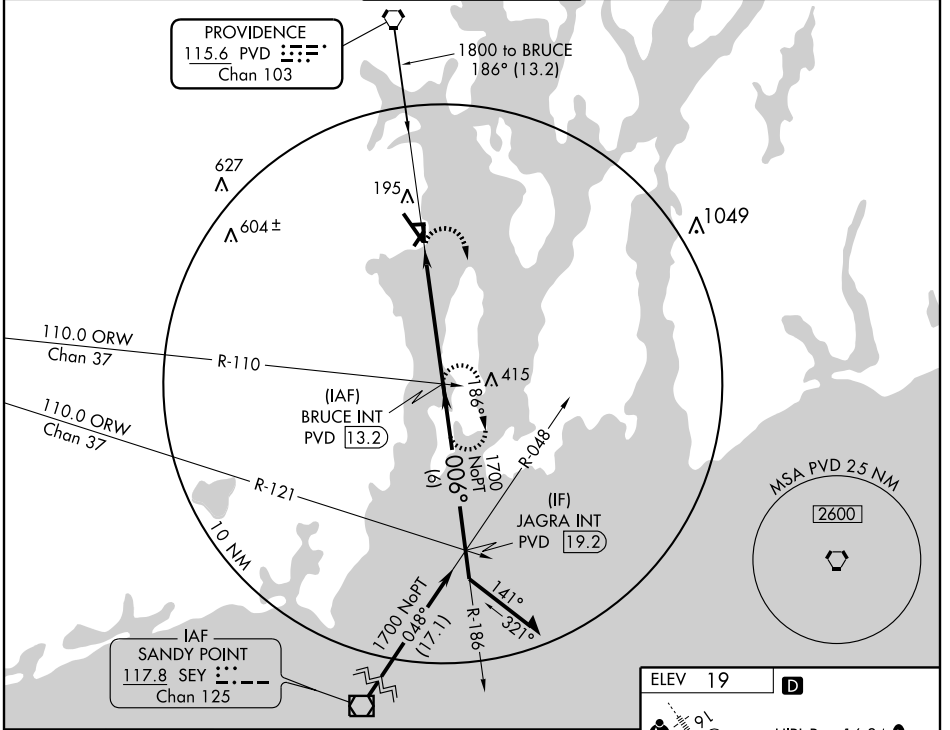
VOR RWY 34

NORTH KINGSTOWN / QUONSET STATE (OQU)

VORTAC PVD 115.6 Chan 103	APP CRS 006°	Rwy Idg 7100 TDZE 12 Apt Elev 19
---	------------------------	---

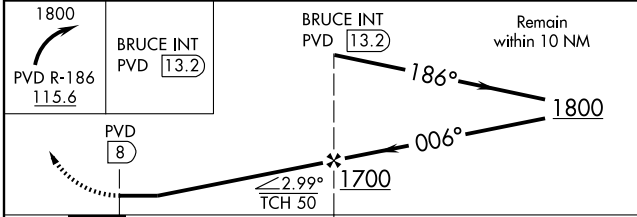
⚠ When local altimeter setting not received, use Providence altimeter setting. MISSED APPROACH: Climbing right turn to 1800 via PVD R-186 to BRUCE Int/PVD 13.2 DME and hold.

ATIS ★ 118.6	PROVIDENCE APP CON ★ 135.4 244.875	QUONSET TOWER ★ 126.35 (CTAF) 252.9	GND CON 134.5 275.8	UNICOM 122.95
------------------------	--	---	-------------------------------	-------------------------

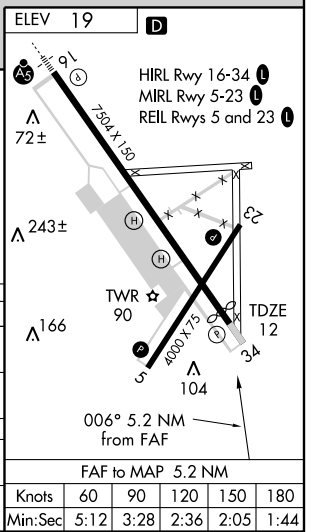


NE-1, 22 OCT 2009 to 19 NOV 2009

NE-1, 22 OCT 2009 to 19 NOV 2009



CATEGORY	A		B		C		D	
	S-34	660-1	648 (700-1)	660-1¾	648 (700-1¾)	660-2	648 (700-2)	
CIRCLING	660-1	641 (700-1)	660-1¾	641 (700-1¾)	660-2	641 (700-2)		
PROVIDENCE ALTIMETER SETTING MINIMUMS								
S-34	680-1	668 (700-1)	680-1¾	668 (700-1¾)	680-2	668 (700-2)		
CIRCLING	680-1	661 (700-1)	680-1¾	661 (700-1¾)	680-2	661 (700-2)		



VOR RWY 34

Knots	60	90	120	150	180
Min:Sec	5:12	3:28	2:36	2:05	1:44