

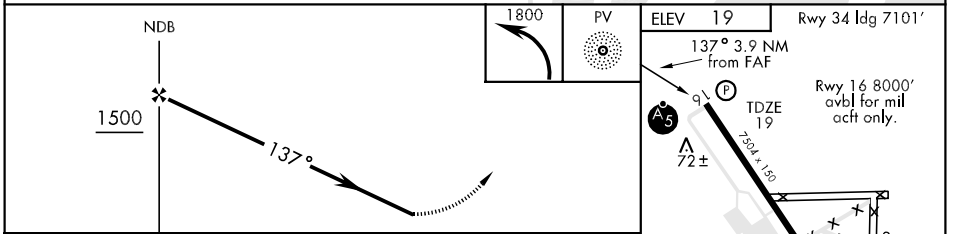
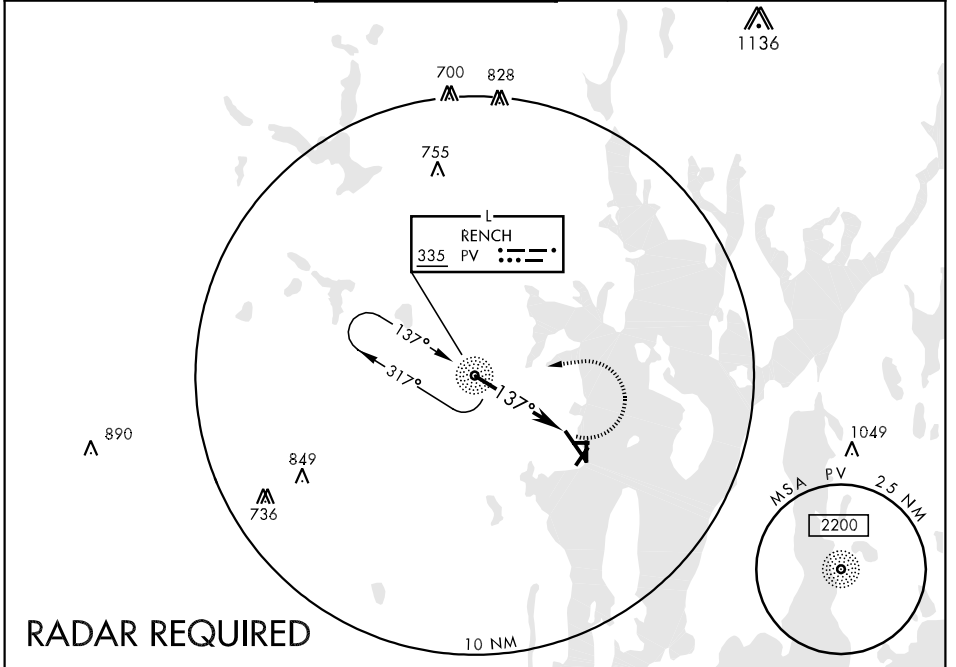
NDB PV <b>335</b>	APCH CRS <b>137°</b>	Rwy ldg TDZE Arprt Elev <b>7504</b> <b>19</b>	AL-338 [USA]	NORTH KINGSTOWN/ QUONSET STATE (OQU)
----------------------	-------------------------	--	--------------	--------------------------------------

**NA** Procedure not authorized when Providence approach control closed. When local altimeter not received, use Providence altimeter setting.

**MALSR** **A5**

**MISSED APPROACH:** Climbing left turn to 1800 direct PV NDB and hold or as directed by ATC.

PROVIDENCE APP CON <b>135.4 244.875</b>	QUONSET TOWER ★ <b>126.35 (CTAF) 0 252.9</b>	GND CON <b>134.5 275.8</b>	UNICOM <b>122.95</b>
--	---	-------------------------------	-------------------------



CATEGORY	A	B	C	D
S-16	520-1	501 (600-1)	520-1½	501 (600-½)
CIRCLING	560-1	541 (600-1)	560-1½	580-2
			541 (600-½)	561 (600-2)
PROVIDENCE ALTIMETER SETTING MINIMUMS				
S-16	540-1	521 (600-1)	540-1½	540-1¾
			521 (600-½)	521 (600-1¾)
CIRCLING	600-1	581 (600-1)	600-1½	600-2
			581 (600-½)	581 (600-2)

FAF to MAP 3.9 NM					
Knots	60	90	120	150	180
Min:Sec	3:54	2:36	1:57	1:34	1:18

NE-1, 22 OCT 2009 to 19 NOV 2009

NE-1, 22 OCT 2009 to 19 NOV 2009