

# RNAV (GPS) RWY 8L

PUEBLO MEMORIAL (PUB)

WAAS CH <b>61011</b> <b>W08A</b>	APP CRS <b>077°</b>	Rwy Idg TDZE Apt Elev	<b>10496</b> <b>4668</b> <b>4726</b>
--	------------------------	-----------------------------	--

**▼** For uncompensated Baro-VNAV systems, LNAV/VNAV NA below -24°C (-11°F) or above 40°C (104°F). DME/DME RNP -0.3 NA. When local altimeter setting not received, use La Junta altimeter setting and increase all DA/MDA 200 feet and increase visibilities: LPV all Cats ½ mile, LNAV/VNAV all Cats ¾ mile, LNAV Cats C and D ¾ mile, and Circling Cat B ¼ mile and Cats C and D ¾ mile. When using La Junta altimeter setting, for inoperative MALSR increase LPV all Cats visibility ½ mile. Baro-VNAV and VDP NA when using La Junta altimeter setting.

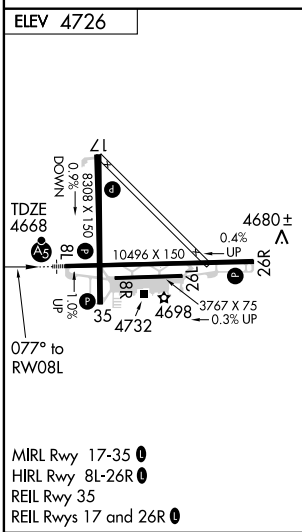
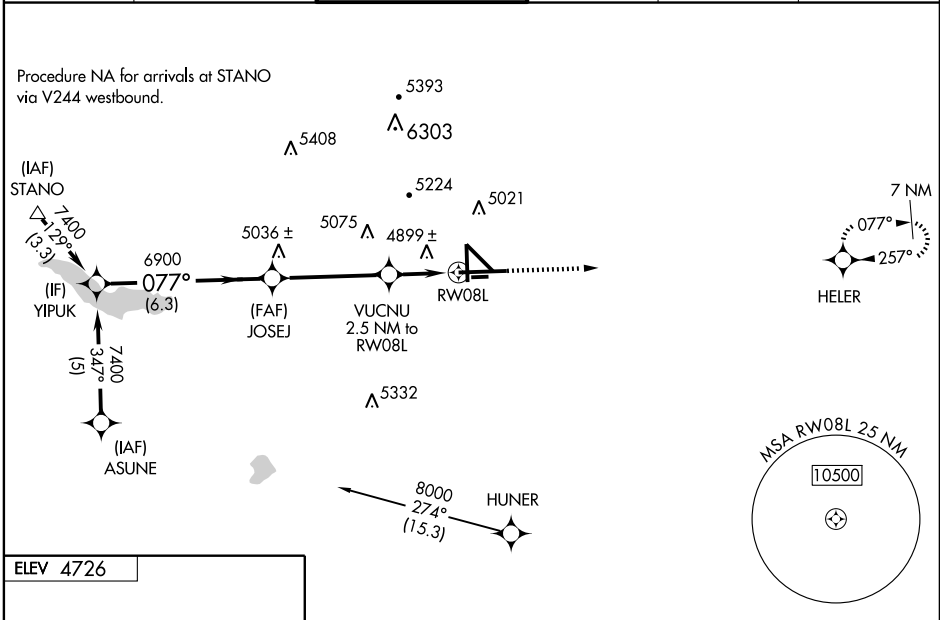
**MALSR**

**MISSED APPROACH:**  
Climb to 7000 direct HELER and hold.

ATIS * <b>125.25</b>	DENVER APP CON * <b>120.1 290.5</b>	<b>PUEBLO TOWER *</b> <b>119.1 (CTAF) 0 257.8</b>	GND CON <b>121.9</b>	CLNC DEL <b>120.9</b>	UNICOM <b>122.95</b>
-------------------------	--	--	-------------------------	--------------------------	-------------------------

SW-1, 22 OCT 2009 to 19 NOV 2009

SW-1, 22 OCT 2009 to 19 NOV 2009



	YIPUK 7400	JOSEJ 6900	VUCNU 2.5 NM to RW08L 5520*	*1.4 NM to RW08L	RW08L
	6.3 NM	4.2 NM	1.1 NM	1.4 NM	
CATEGORY	A	B	C	D	
LPV DA	4918-½		250 (300-½)		
LNAV/ VNAV DA	5227-1½		559 (600-1½)		
LNAV MDA	5160-½	492 (500-½)	5160-¾ 492 (500-¾)	5160-1 492 (500-1)	
CIRCLING	5340-1 614 (700-1)		5340-1¾ 614 (700-1¾)	5380-2 654 (700-2)	