

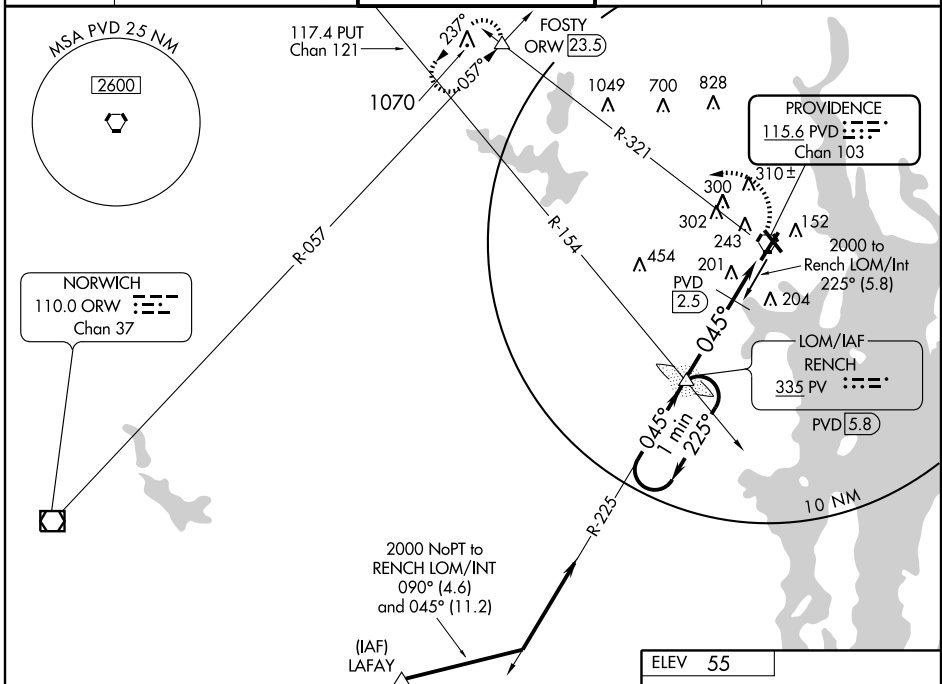
# VOR RWY 5

PROVIDENCE / THEODORE FRANCIS GREEN STATE (PVD)

VORTAC PVD <b>115.6</b> Chan <b>103</b>	APP CRS <b>045°</b>	Rwy Idg TDZE <b>53</b> Apt Elev <b>55</b>	<b>7166</b>
---	------------------------	---	-------------

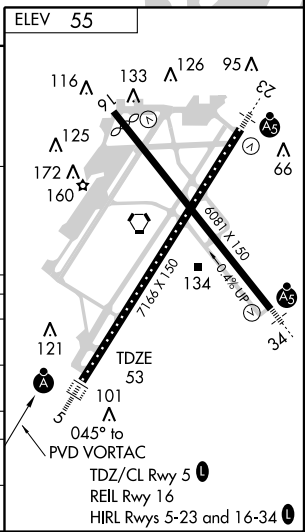
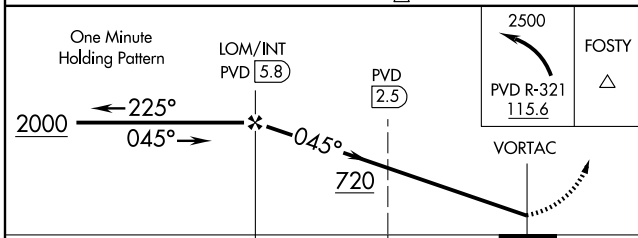
		MISSED APPROACH: Climbing left turn to 2500 via PVD R-321 to FOSTY Int and hold.		
--	--	--	--	--

ATIS <b>124.2</b>	PROVIDENCE APP CON ★ <b>135.4 244.875</b>	PROVIDENCE TOWER ★ <b>120.7</b> (CTAF) <b>257.8</b>	GND CON <b>121.9 348.6</b>	CLNC DEL <b>126.65 348.6</b>
----------------------	--	--	-------------------------------	---------------------------------



NE-1, 22 OCT 2009 to 19 NOV 2009

NE-1, 22 OCT 2009 to 19 NOV 2009



CATEGORY	A	B	C	D
S-5	720/24	667 (700-½)	720/60 667 (700-¼)	720-1½ 667 (700-½)
CIRCLING	720-1	665 (700-1)	720-1¾ 665 (700-¾)	720-2 665 (700-2)
DME MINIMUMS				
S-5	540/24	487 (500-½)	540/40 487 (500-¾)	540/50 487 (500-1)
CIRCLING	560-1	505 (600-1)	620-1½ 565 (600-½)	620-2 565 (600-2)