

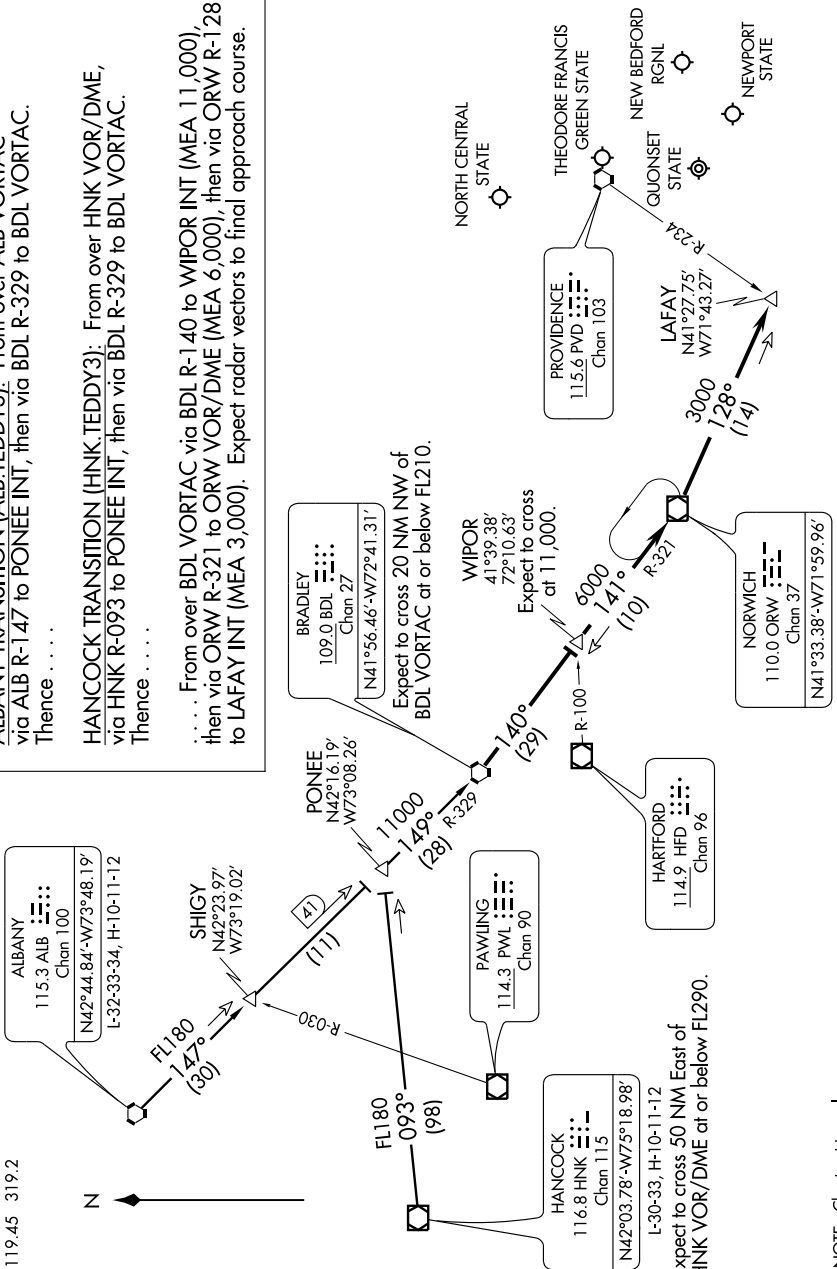
ARRIVAL ROUTE DESCRIPTION

ALBANY TRANSITION (ALB.TEDDY3): From over ALB VORTAC via ALB R-147 to PONEE INT, then via BDL R-329 to BDL VORTAC. Thence

HANCOCK TRANSITION (HINK.TEDDY3): From over HNK VOR/DME, via HNK R-093 to PONEE INT, then via BDL R-329 to BDL VORTAC. Thence

. . . . From over BDL VORTAC via BDL R-140 to WIPOR INT (MEA 11,000), then via ORW R-321 to ORW VOR/DME (MEA 6,000), then via ORW R-128 to LAFAY INT (MEA 3,000). Expect radar vectors to final approach course.

NEW BEDFORD ATIS 126.85
PROVIDENCE ATIS 124.2
PROVIDENCE APP CON *
119.45 319.2



HANCOCK
116.8 HNK
Chan 115
N42°03.78'-W75°18.98'
L-30-33, H-10-11-12
Expect to cross 50 NM East of
HNK VOR/DME at or below FL290.

NOTE: Chart not to scale.