


RNAV (GPS) RWY 34

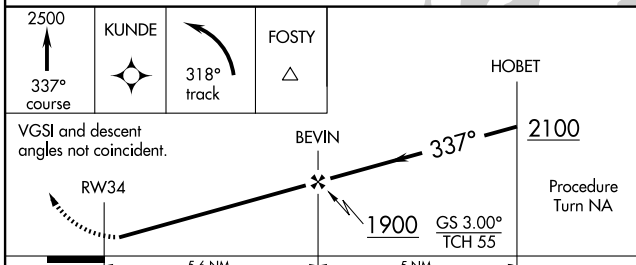
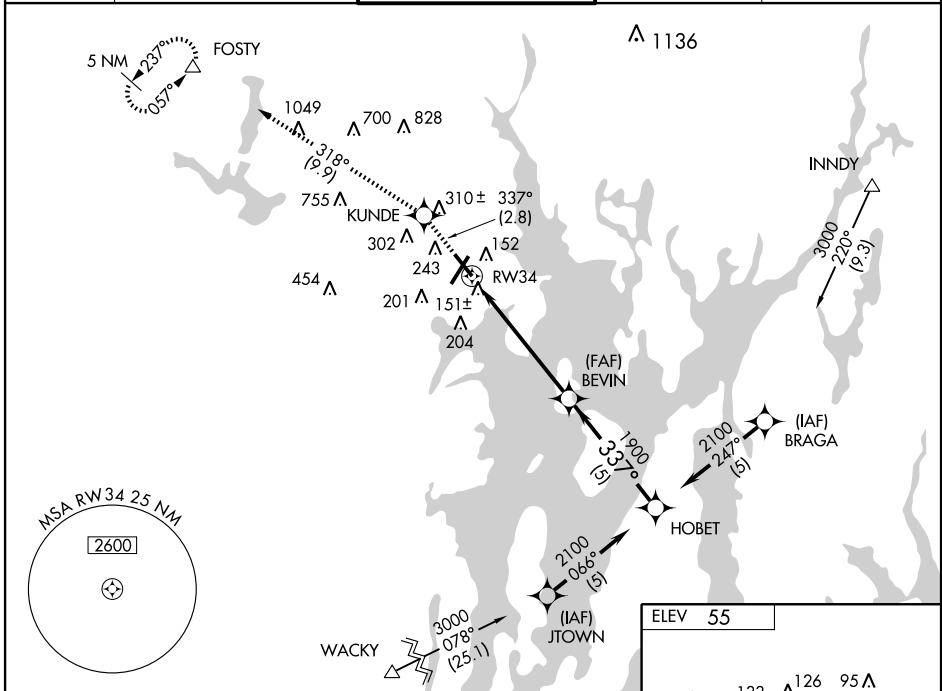
PROVIDENCE / THEODORE FRANCIS GREEN STATE (PVD)

APP CRS 337°	Rwy Idg 6081
	TDZE 51
	Apt Elev 55

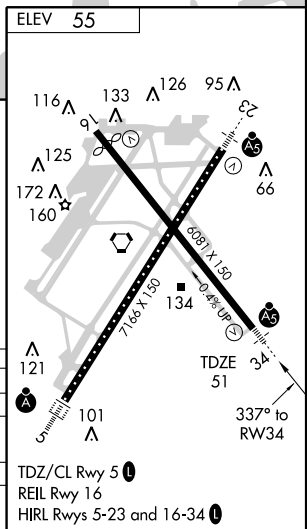
V BARO-VNAV NA below -1.5°C (5°F).
W DME/DME RNP-0.3 NA.
 For inoperative MALSR, increase LNAV/VNAV all Cats visibility to RVR 6000; inoperative table does not apply to LNAV Cats A and B, increase LNAV Cats C and D visibility to RVR 6000.

MALSR
 MISSED APPROACH: Climb to 2500 via 337° course to KUNDE WP then left turn via 318° track to FOSTY and hold.

ATIS 124.2	PROVIDENCE APP CON * 135.4 244.875	PROVIDENCE TOWER * 120.7 (CTAF) 0 257.8	GND CON 121.9 348.6	CLNC DEL 126.65 348.6
----------------------	--	---	-------------------------------	---------------------------------



CATEGORY	A		B		C		D	
	GLS PA DA NA							
LNAV/VNAV DA	420/50		369 (400-1)					
LNAV MDA	460/50		409 (500-1)					
CIRCLING	560-1¼	505 (600-1¼)	620-1½	565 (600-1½)	620-2	565 (600-2)		



RNAV (GPS) RWY 34

NE-1, 22 OCT 2009 to 19 NOV 2009

NE-1, 22 OCT 2009 to 19 NOV 2009