

RNAV (GPS) RWY 23

PROVIDENCE / THEODORE FRANCIS GREEN STATE (PVD)

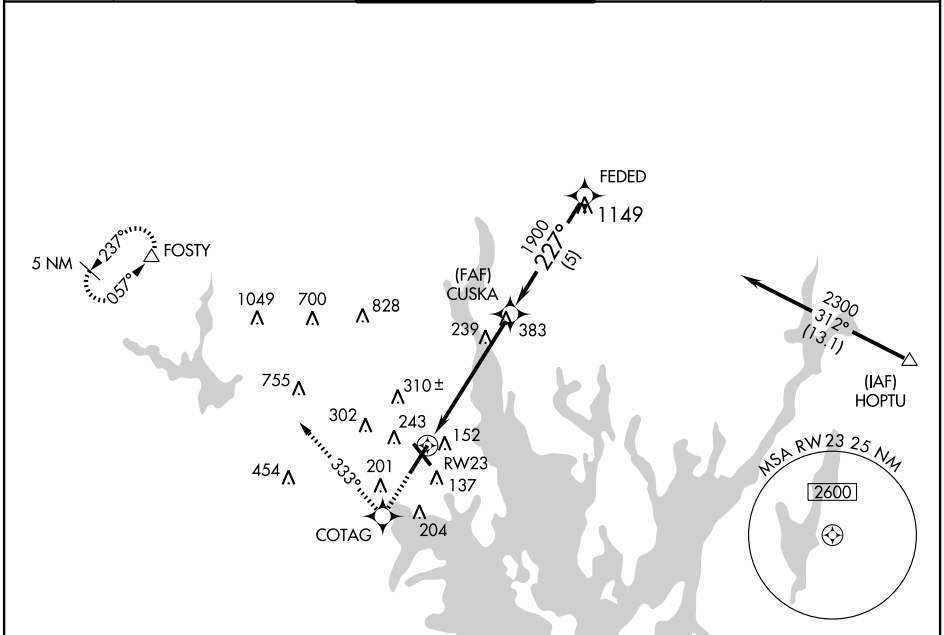
APP CRS	Rwy Idg	7166
227°	TDZE	50
	Apt Elev	55

▼ BARO-VNAV NA below -1.5°C (5°F). DME/DME RNP-0.3 NA.
 For inoperative MALSRL increase LNAV Cat A and B visibility to
W RVR 5000. Visibility reduction by helicopters NA.



MISSED APPROACH: Climb to 2500 direct COTAG then via 333° track to FOSTY and hold.

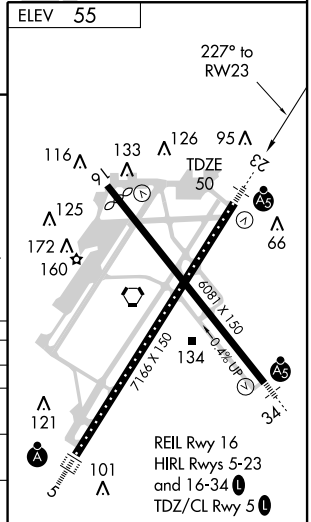
ATIS 124.2	PROVIDENCE APP CON * 135.4 244.875	PROVIDENCE TOWER * 120.7 (CTAF) 0 257.8	GND CON 121.9 348.6	CLNC DEL 126.65 348.6
----------------------	--	---	-------------------------------	---------------------------------



NE-1, 22 OCT 2009 to 19 NOV 2009

NE-1, 22 OCT 2009 to 19 NOV 2009

ELEV 55	Procedure Turn NA			
2500	COTAG	333° track	FOSTY	
* 1.4 NM to RWY 23 * LNAV only CUSKA 227° 2300 FEDED 1900 GS 3.00° TCH 51 VGSIL and descent angles not coincident.				
CATEGORY	A	B	C	D
GLS PA DA	NA			
LNAV/VNAV DA	426/40 376 (400-¾)			
LNAV MDA	540/40 490 (500-¾)		540/50 490 (500-1)	
CIRCLING	560-1 505 (600-1)	620-1½ 565 (600-1½)		620-2 565 (600-2)



RNAV (GPS) RWY 23