

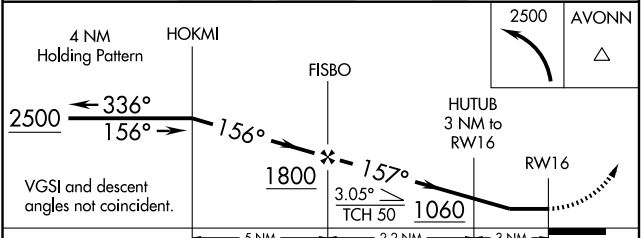
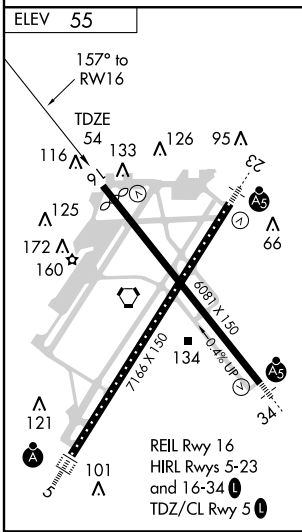
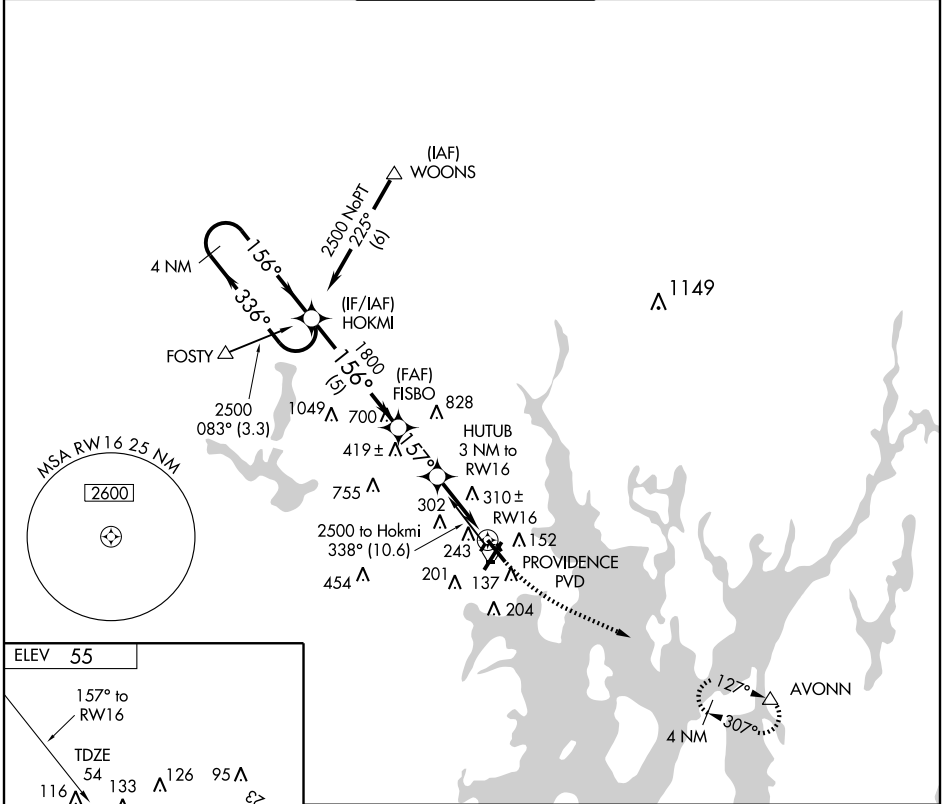
RNAV (GPS) RWY 16

PROVIDENCE / THEODORE FRANCIS GREEN STATE (PVD)

APP CRS 157°	Rwy Idg 5516
	TDZE 54
	Apt Elev 55

▽ DME/DME RNP-0.3 NA.	MISSED APPROACH: Climbing left turn to 2500 direct AVONN WP and hold.
------------------------------	---

ATIS 124.2	PROVIDENCE APP CON * 135.4 244.875	PROVIDENCE TOWER * 120.7 (CTAF) 257.8	GND CON 121.9 348.6	CLNC DEL 126.65 348.6
----------------------	--	--	-------------------------------	---------------------------------



CATEGORY	A	B	C	D
LNNAV MDA	560-1	506 (600-1)	560-1½	506 (600-1½)
CIRCLING	560-1	505 (600-1)	620-1½ 565 (600-1½)	620-2 565 (600-2)

NE-1, 22 OCT 2009 to 19 NOV 2009

NE-1, 22 OCT 2009 to 19 NOV 2009