

LOC/DME I-PVD 109.3 Chan 30	APP CRS 047°	Rwy Ldg 7166 TDZE 53 Apt Elev 55
--	------------------------	---

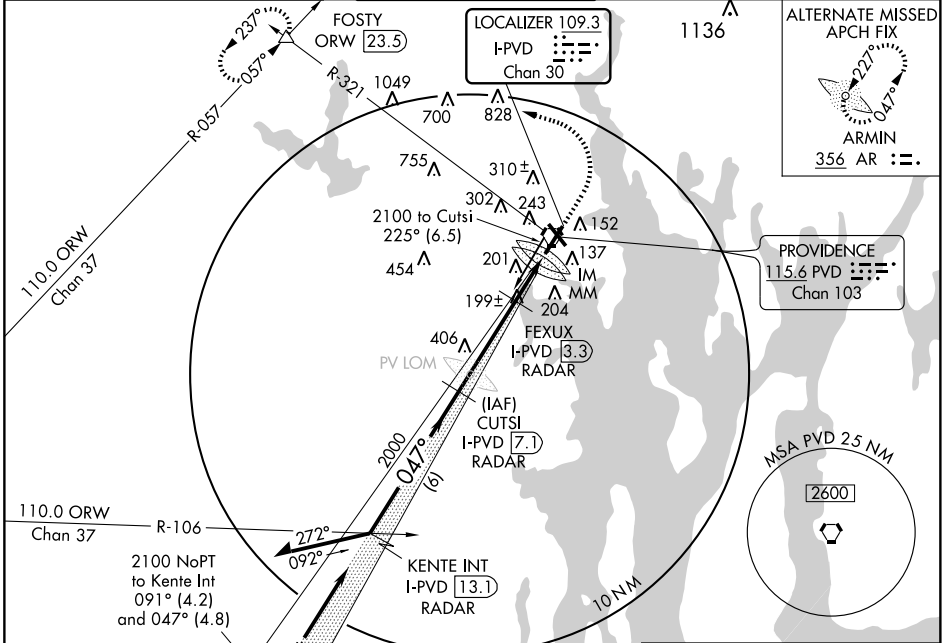
PROVIDENCE / THEODORE FRANCIS GREEN STATE (PVD)

ILS RWY 5 (CAT III)

▼ Cat III minima NA when tower closed. Touchdown and Rollout RVR authorized for Cat III, both are controlling.
▲ RADAR or DME Required for localizer minima.

ALS-F2 MISSED APPROACH: Climb to 800, then climbing left turn to 2500 via heading 270° and PVD R-321 to FOSTY Int/ORW 23.5 DME and hold.

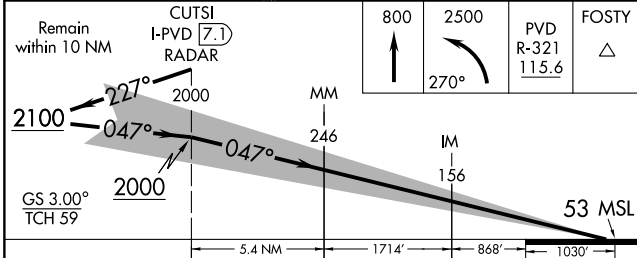
ATIS 124.2	PROVIDENCE APP CON * 135.4 244.875	PROVIDENCE TOWER * 120.7 (CTAF) 0 257.8	GND CON 121.9 348.6	CLNC DEL 126.65 348.6
----------------------	--	---	-------------------------------	---------------------------------



NE-1, 22 OCT 2009 to 19 NOV 2009

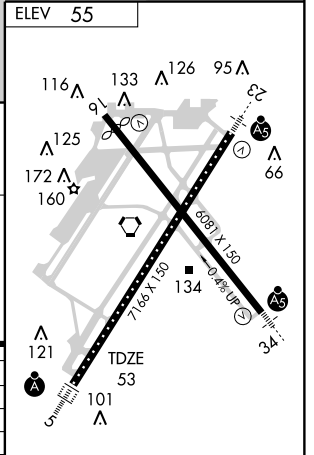
NE-1, 22 OCT 2009 to 19 NOV 2009

Procedure NA for arrivals at LAFAY via V130 northwestbound.



CATEGORY	A	B	C	D
S-ILS 5		CAT IIIA	RVR 07	
S-ILS 5		CAT IIIB	RVR 06	
S-ILS 5		CAT IIIC	NA	

CATEGORY III ILS - SPECIAL AIRCREW & AIRCRAFT CERTIFICATION REQUIRED



REIL Rwy 16
 TDZ/CL Rwy 5
 HIRL Rwy 5-23 and 16-34