

PRESQUE ISLE, MAINE

AL-331 (FAA)

WAAS CH <b>99712</b> <b>W19A</b>	APP CRS <b>186°</b>	Rwy Idg <b>7439</b> TDZE <b>534</b> Apt Elev <b>534</b>
--	------------------------	---

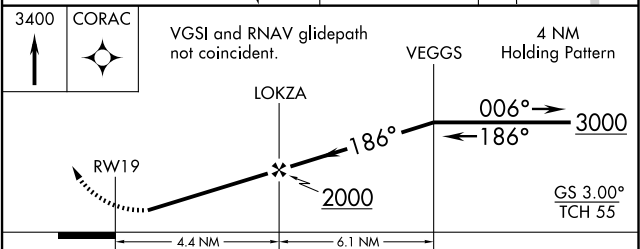
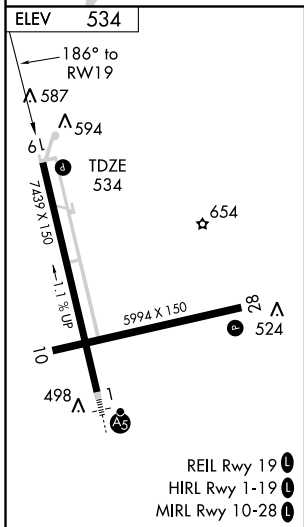
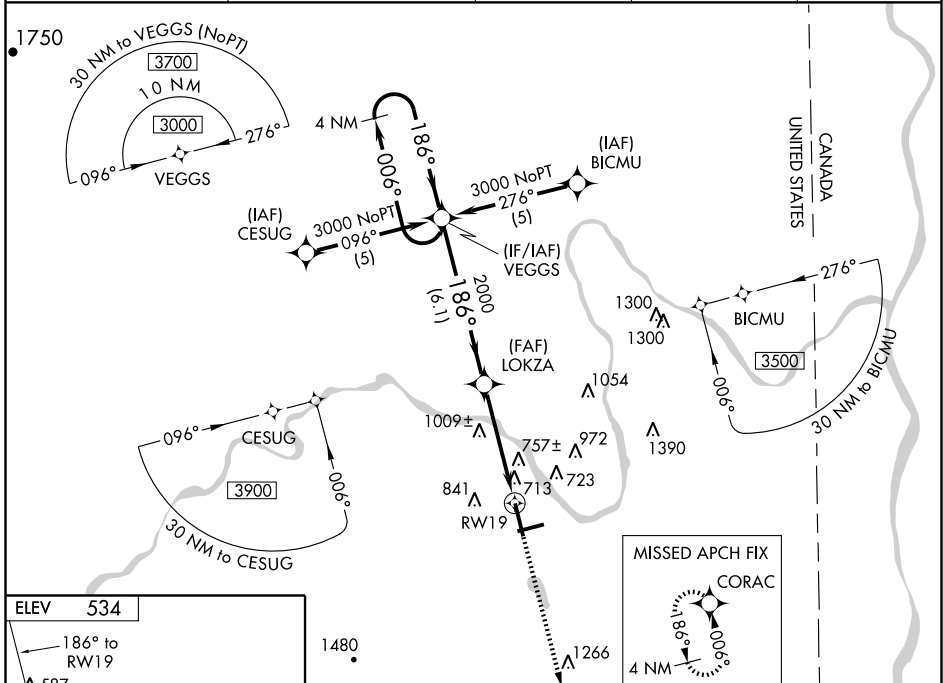
# RNAV (GPS) RWY 19

PRESQUE ISLE/  
NORTHERN MAINE RGNL ARPT AT PRESQUE ISLE (PQI)

For uncompensated Baro-VNAV systems, LNAV/VNAV NA below -16°C (4°F) or above 47°C (116°F). DME/DME RNP-0.3 NA. Visibility reduction by helicopters NA.  
Baro-VNAV NA when using Houlton Intl altimeter setting. When local altimeter setting not received, use Houlton Intl altimeter setting and increase all DA 89 feet and all MDA 100 feet, increase LPV all Cats., LNAV Cat. B, and Circling Cat. B visibility ¼ mile, increase LNAV/VNAV all Cats., LNAV Cat. C and D, and Circling Cat. C and D visibility ½ mile.

MISSED APPROACH:  
Climb to 3400 direct  
CORAC and hold

AWOS-3 <b>118.025</b>	BOSTON CENTER <b>124.75 239.05</b>	CLNC DEL <b>121.6</b>	UNICOM <b>122.8</b> (CTAF)	<b>122.6</b>
--------------------------	---------------------------------------	--------------------------	-------------------------------	--------------



CATEGORY	A	B	C	D
LPV DA	968-1½		434 (500-1½)	
LNAV/VNAV DA	1058-1¾		524 (600-1¾)	
LNAV MDA	1260-1	726 (800-1)	1260-2 726 (800-2)	1260-2¼ 726 (800-2¼)
CIRCLING	1260-1	726 (800-1)	1260-2 726 (800-2)	1260-2¼ 726 (800-2¼)

REIL Rwy 19   
HIRL Rwy 1-19   
MIRL Rwy 10-28

PRESQUE ISLE, MAINE  
Orig 09183

PRESQUE ISLE/ NORTHERN MAINE RGNL ARPT AT PRESQUE ISLE (PQI)  
46° 41' N - 68° 03' W  
**RNAV (GPS) RWY 19**

NE-1, 22 OCT 2009 to 19 NOV 2009

NE-1, 22 OCT 2009 to 19 NOV 2009