

# RNAV (GPS) RWY 1

PRESQUE ISLE/  
NORTHERN MAINE RGNL ARPT AT PRESQUE ISLE (PQI)

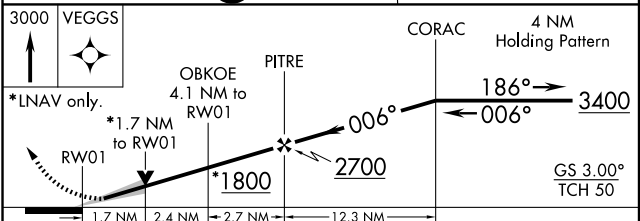
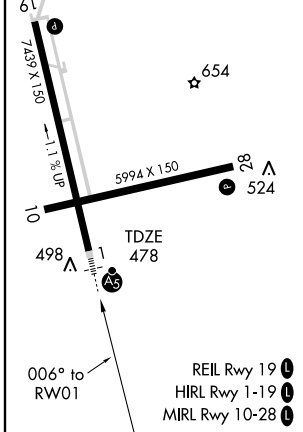
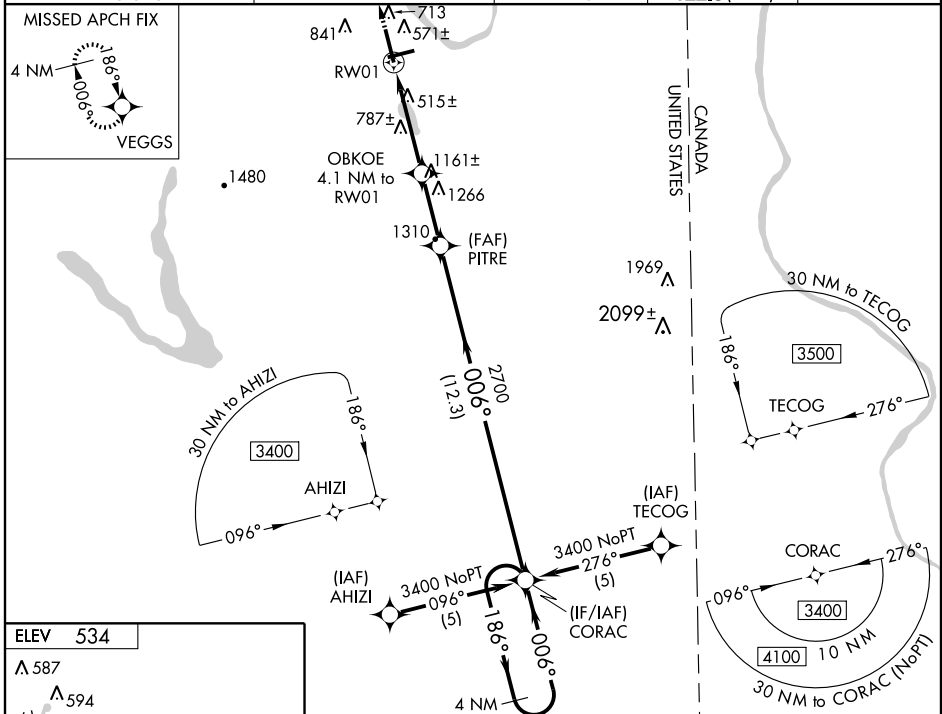
WAAS CH <b>87012</b> <b>W01A</b>	APP CRS <b>006°</b>	Rwy Idg <b>7439</b>
		TDZE <b>478</b>
		Apt Elev <b>534</b>

For uncompensated Baro-VNAV systems, LNAV/VNAV NA below -16°C (4°F) or above 48°C (118°F). DME/DME RNP-0.3 NA. VDP and Baro-VNAV NA when using Houlton Intl altimeter setting. When local altimeter setting not received, use Houlton Intl altimeter setting and increase all DA 89 feet and all MDA 100 feet, increase LNAV/VNAV all Cats., LNAV Cat. C and D, and Circling Cat. C visibility ¼ mile, increase Circling Cat. D visibility ½ mile. For inoperative MALSR when using Houlton Intl altimeter setting, increase LPV to 1 mile.



MISSED APPROACH:  
Climb to 3000 direct  
VEGGS and hold.

AWOS-3 <b>118.025</b>	BOSTON CENTER <b>124.75 239.05</b>	CLNC DEL <b>121.6</b>	UNICOM <b>122.8 (CTAF)</b>	<b>122.6</b>
--------------------------	---------------------------------------	--------------------------	-------------------------------	--------------



CATEGORY	A	B	C	D
LPV DA		678-½	200 (200-½)	
LNAV/VNAV DA		1171-2	693 (700-2)	
LNAV MDA	1040-½	562 (600-½)	1040-1 562 (600-1)	1040-1¼ 562 (600-1¼)
CIRCLING	1120-1 586 (600-1)	1160-1 626 (700-1)	1160-1¾ 626 (700-1¾)	1200-2 666 (700-2)

NE-1, 22 OCT 2009 to 19 NOV 2009

NE-1, 22 OCT 2009 to 19 NOV 2009