

PORTLAND, MAINE

AL-329 (FAA)

RNAV (GPS) RWY 11

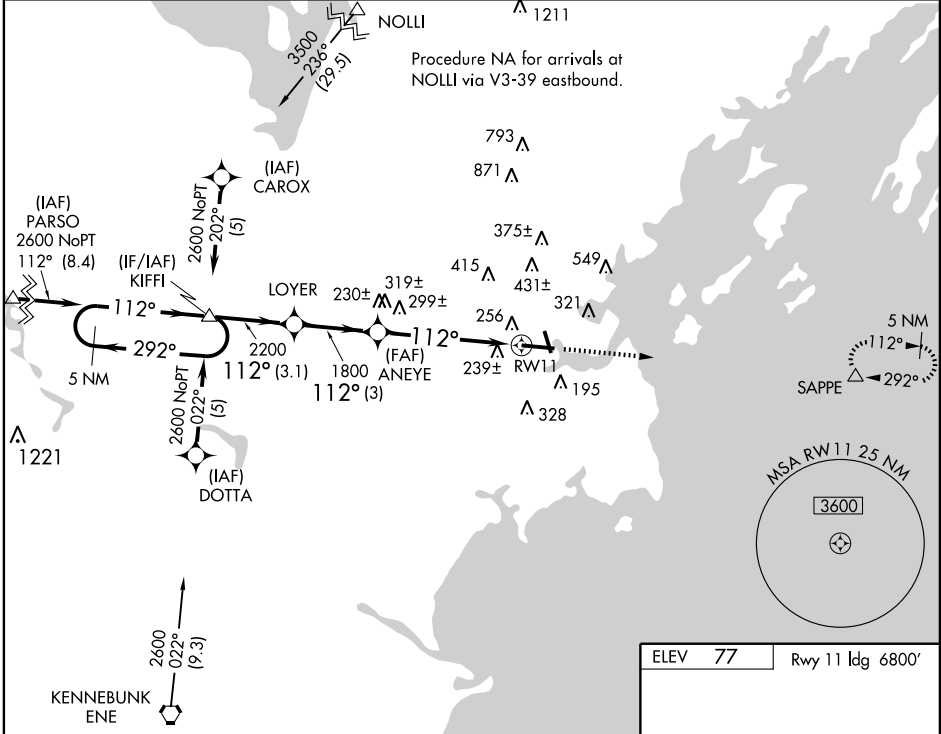
PORTLAND INTL JETPORT (P'WM)

WAAS CH 50127 W11A	APP CRS 112°	Rwy ldg 6800 TDZE 77 Apt Elev 77
--	------------------------	---

ALSF-2
For inoperative ALSF-2, increase LPV visibility to RVR 6000 all Cats.
Baro-VNAV NA below -15°C (5°F).
DME/DME RNP-0.3 NA.

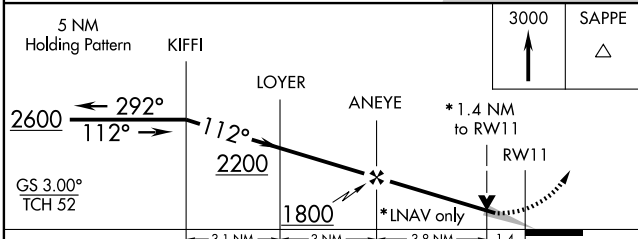
MISSED APPROACH: Climb to 3000 direct SAPPE and hold.

ATIS 119.05	PORTLAND APP CON ★ 119.75 381.2	PORTLAND TOWER ★ 120.9 0 (CTAF) 257.8	GND CON 121.9	CLNC DEL 121.9	UNICOM 122.95
-----------------------	---	---	-------------------------	--------------------------	-------------------------

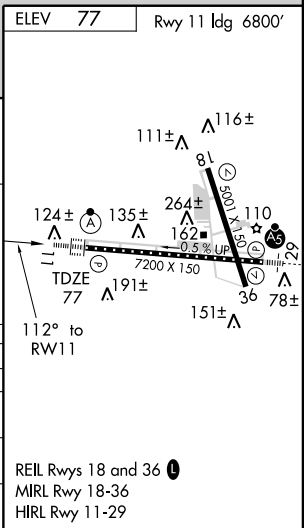


NE-1, 22 OCT 2009 to 19 NOV 2009

NE-1, 22 OCT 2009 to 19 NOV 2009



CATEGORY	A	B	C	D
LPV DA	416/40 339 (400-¾)			
LNNAV/VNAV DA	531/50 454 (500-1)			
LNNAV MDA	560/24	483 (500-½)	560/40 483 (500-¾)	560/50 483 (500-1)
CIRCLING	620-1	543 (600-1)	640-1½ 563 (600-1½)	740-2 663 (700-2)



PORTLAND, MAINE
Amdt 2B 08269

43°39'N · 70°19'W

PORTLAND INTL JETPORT (P'WM) RNAV (GPS) RWY 11