

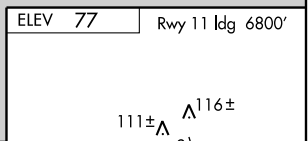
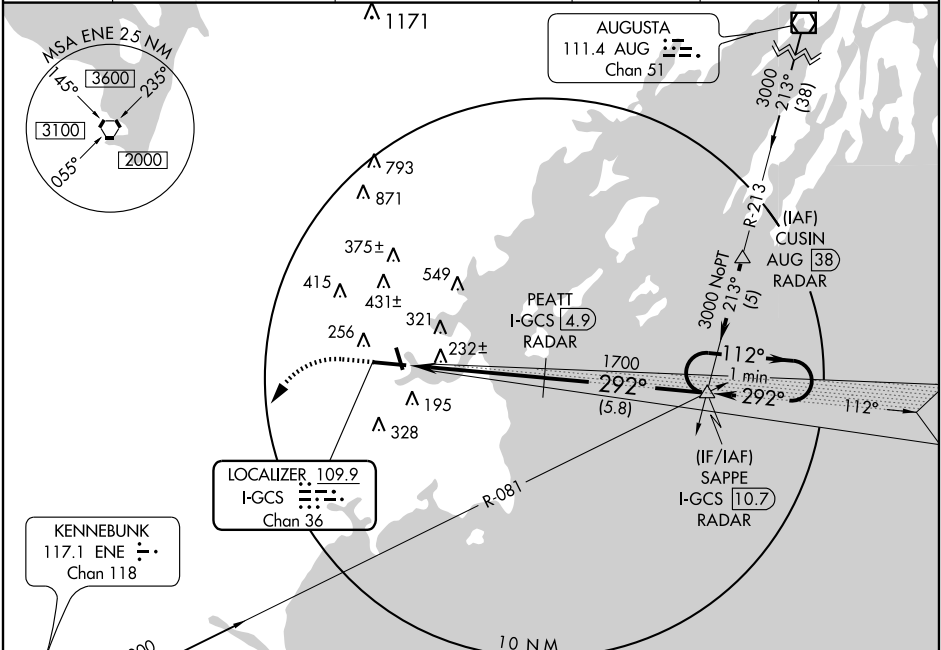
LOC/DME I-GCS 109.9 Chan 36	APP CRS 292°	Rwy ldg 7200 TDZE 57 Apt Elev 77
---	------------------------	---

ILS or LOC RWY 29

PORTLAND INTL JETPORT (P'WM)

<p>▽ DME or RADAR REQUIRED. DME required when Portland Approach Control closed.</p> <p>▲ * RVR 1800 authorized with the use of FD or AP or HUD to DA.</p>	<p>MALSR</p>	<p>MISSED APPROACH: Climb to 700, then climbing left turn to 3000 direct ENE VORTAC and hold.</p>
---	--------------	---

<p>ATIS 119.05</p>	<p>PORTLAND APP CON * 119.75 381.2</p>	<p>PORTLAND TOWER * 120.9 (CTAF) 257.8</p>	<p>GND CON 121.9</p>	<p>CLNC DEL 121.9</p>	<p>UNICOM 122.95</p>
-------------------------------	---	--	---------------------------------	----------------------------------	---------------------------------



700	3000	ENE 117.1	PEATT I-GCS 4.9 RADAR	SAPPE I-GCS 10.7 RADAR	One Minute Holding Pattern
I-GCS 1.2		1700	292°	112°	3000
1.3		3.7 NM	5.8 NM	GS 3.00° TCH 52	

CATEGORY	A	B	C	D
S-ILS 29	*257/24 200 (200-½)			
S-LOC 29	500/24	443 (500-½)	500/40 443 (500-¾)	500/50 443 (500-1)
CIRCLING	620-1	543 (600-1)	640-1½ 563 (600-1½)	740-2 663 (700-2)

ELEV 77	Rwy 11 ldg 6800'
<p>REIL Rwy 18 and 36</p> <p>MIRL Rwy 18-36</p> <p>HIRL Rwy 11-29</p> <p>FAF to MAP 5 NM</p>	
Knots	60 90 120 150 180
Min:Sec	5:00 3:20 2:30 2:00 1:40

NE-1, 22 OCT 2009 to 19 NOV 2009

NE-1, 22 OCT 2009 to 19 NOV 2009