

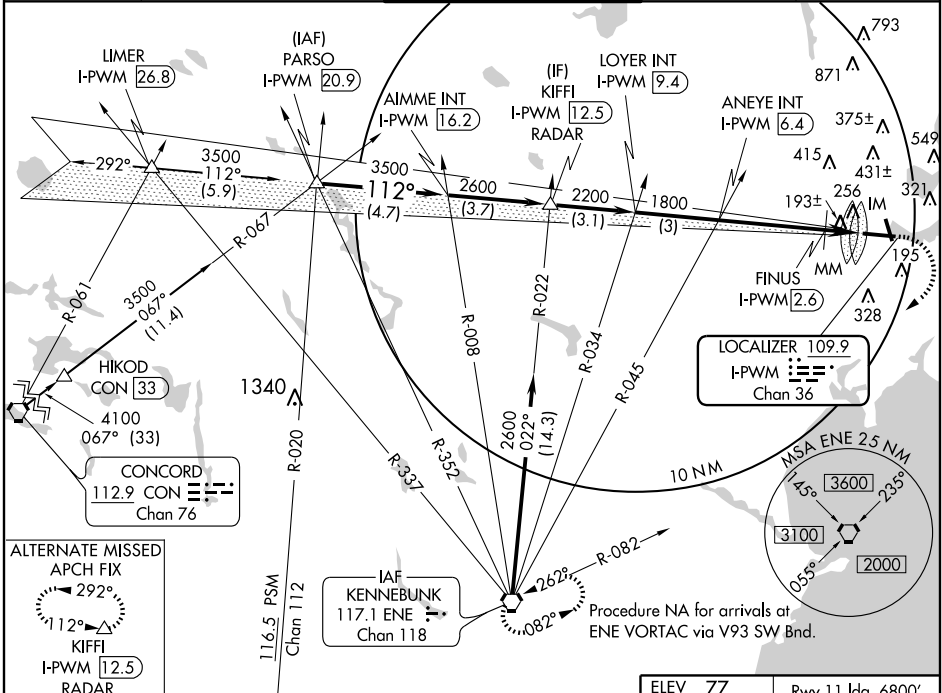
ILS or LOC RWY 11

PORTLAND INTL JETPORT (PWM)

LOC/DME I-PWM 109.9 Chan 36	APP CRS 112°	Rwy ldg 6800 TDZE 77 Apt Elev 77
-------------------------------------------------	------------------------	-------------------------------------------------------------

⚠ CAT II and III NA when control tower closed. **ALS-F-2** **(A)** MISSED APPROACH: Climb to 600 then climbing right turn to 3000 direct ENE VORTAC and hold.

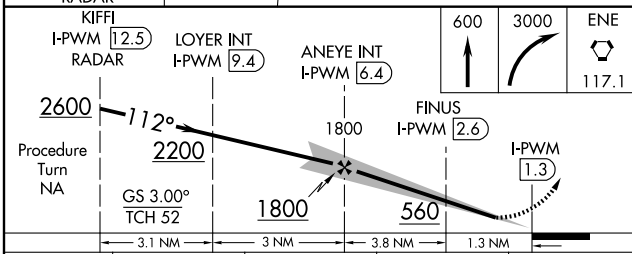
ATIS 119.05	PORTLAND APP CON * 119.75 381.2	PORTLAND TOWER * 120.9 (CTAF) 257.8	GND CON 121.9	UNICOM 122.95
-----------------------	-------------------------------------------	------------------------------------------------------	-------------------------	-------------------------



NE-1, 22 OCT 2009 to 19 NOV 2009

NE-1, 22 OCT 2009 to 19 NOV 2009

ALTERNATE MISSED APCH FIX
 292°
 112°
 KIFFI
 I-PWM 12.5
 RADAR



CATEGORY	A	B	C	D
S-ILS 11	277/18 200 (200-½)			
S-LOC 11	560/24	483 (500-½)	560/40 483 (500-¾)	560/50 483 (500-1)
CIRCLING	620-1	543 (600-1)	640-1½ 563 (600-1½)	740-2 663 (700-2)
FINUS FIX MINIMUMS				
S-LOC 11	460/24 383 (400-½)		460/40 383 (400-¾)	
CIRCLING	620-1	543 (600-1)	640-1½ 563 (600-1½)	740-2 663 (700-2)

ELEV 77 Rwy 11 ldg 6800'

112° 5.2 NM from FAF
 REIL Rws 18 and 36
 MIRL Rwy 18-36
 HIRL Rwy 11-29
 FAF to MAP 5.2 NM
 Knots: 60 90 120 150 180
 Min:Sec: 5:12 3:28 2:36 2:05 1:44