

ILS RWY 11 (CAT III)

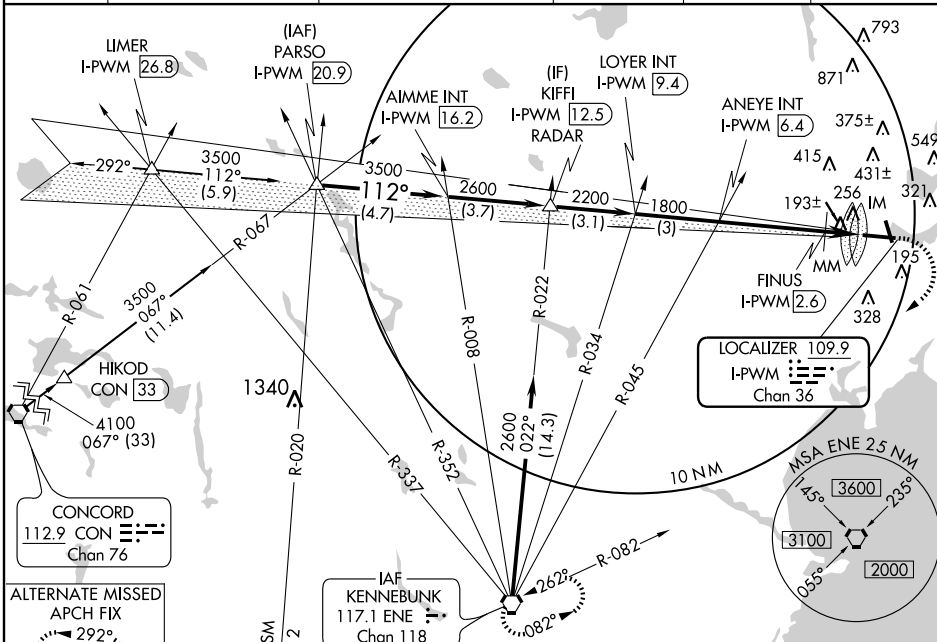
PORTLAND INTL JETPORT (PWM)

LOC/DME I-PWM 109.9 Chan 36	APP CRS 112°	Rwy Idg 6800 TDZE 77 Apt Elev 77
---	------------------------	---

▼ CAT II and III NA when control tower closed.
▲ ALSF-2

MISSED APPROACH: Climb to 600 then climbing right turn to 3000 direct ENE VORTAC and hold.

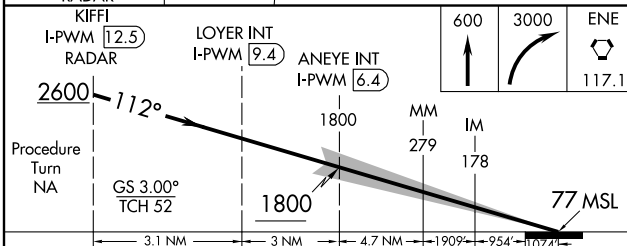
ATIS 119.05	PORTLAND APP CON * 119.75 381.2	PORTLAND TOWER * 120.9 (CTAF) 257.8	GND CON 121.9	CLNC DEL 121.9	UNICOM 122.95
-----------------------	---	--	-------------------------	--------------------------	-------------------------



NE-1, 22 OCT 2009 to 19 NOV 2009

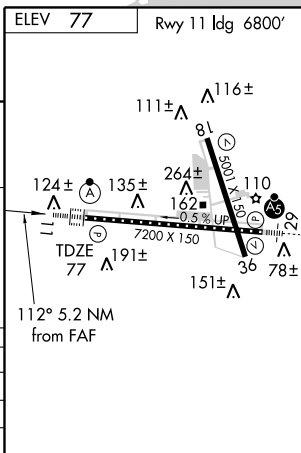
NE-1, 22 OCT 2009 to 19 NOV 2009

Procedure NA for arrivals at ENE VORTAC via V93 SW Bnd.
ELEV 77 Rwy 11 Idg 6800'



CATEGORY	A	B	C	D
S-ILS 11		CAT IIIA	RVR 07	
S-ILS 11		CAT IIIB	RVR 06	
S-ILS 11		CAT IIIC	NA	

CATEGORY III ILS-SPECIAL AIRCREW & AIRCRAFT CERTIFICATION REQUIRED



REIL Rwy 18 and 36
MIRL Rwy 18-36
HIRL Rwy 11-29