

PORTLAND, MAINE

AL-329 (FAA)

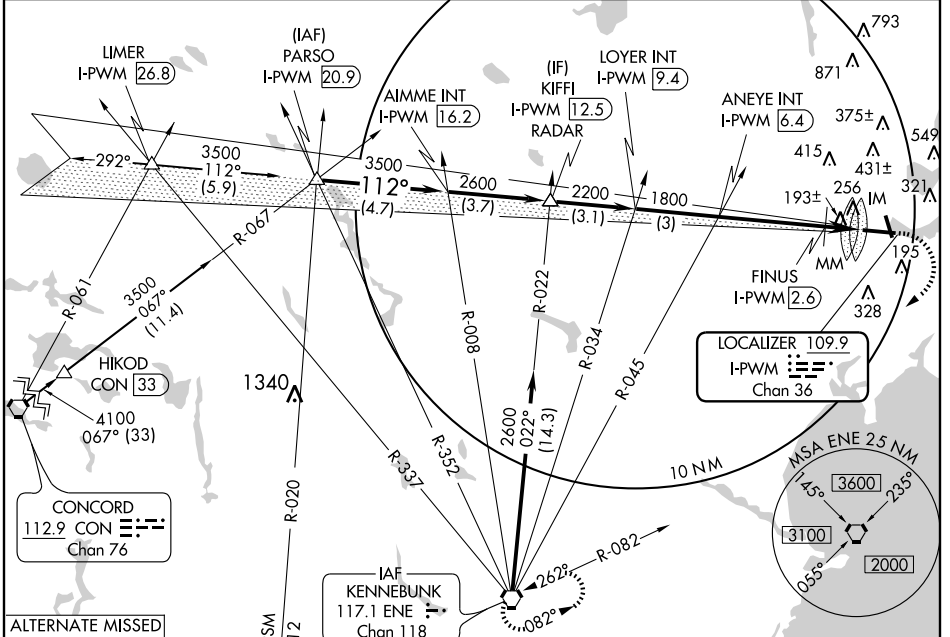
LOC/DME I-PWM 109.9 Chan 36	APP CRS 112°	Rwy ldg 6800 TDZE 77 Apt Elev 77
---	------------------------	---

ILS RWY 11 (CAT II)

PORTLAND INTL JETPORT (PWM)

<p>CAT II and III NA when control tower closed.</p>	<p>ALSIF-2</p>	MISSED APPROACH: Climb to 600 then climbing right turn to 3000 direct ENE VORTAC and hold.

ATIS 119.05	PORTLAND APP CON * 119.75 381.2	PORTLAND TOWER* 120.9 (CTAF) 257.8	GND CON 121.9	CLNC DEL 121.9	UNICOM 122.95
-----------------------	---	---	-------------------------	--------------------------	-------------------------



NE-1, 22 OCT 2009 to 19 NOV 2009

NE-1, 22 OCT 2009 to 19 NOV 2009

ALTERNATE MISSED APCH FIX

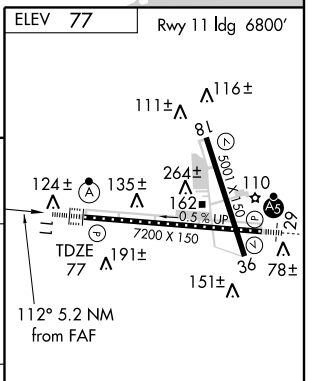
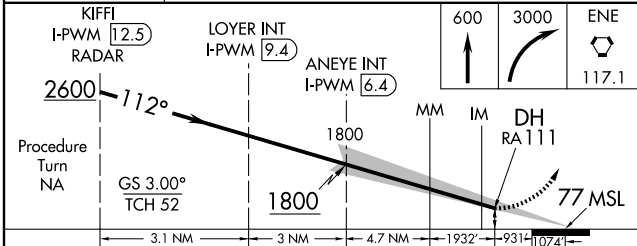
292°

112°

KIFFI

I-PWM 12.5

RADAR



CATEGORY	A	B	C	D
S-ILS 11	177/12 100 RA 111			

CATEGORY II ILS-SPECIAL AIRCREW & AIRCRAFT CERTIFICATION REQUIRED

REIL Rwy 18 and 36

MIRL Rwy 18-36

HIRL Rwy 11-29

PORTLAND, MAINE
Amdt 2A 09239

43°39'N - 70°19'W

PORTLAND INTL JETPORT (PWM)
ILS RWY 11 (CAT II)