

HARBOR VISUAL RWY 29

AL-329 (FAA)

PORTLAND INTL JETPORT (PWM)
PORTLAND, MAINE

ATIS 119.05
 PORTLAND APP CON ★
 119.75 381.2
 PORTLAND TOWER ★
 120.9 (CTAF) 257.8
 GND CON
 121.9
 UNICOM 122.95

Vertical Guidance Navaid
 and Angle:
 LOC I-GCS GS (3.00°)

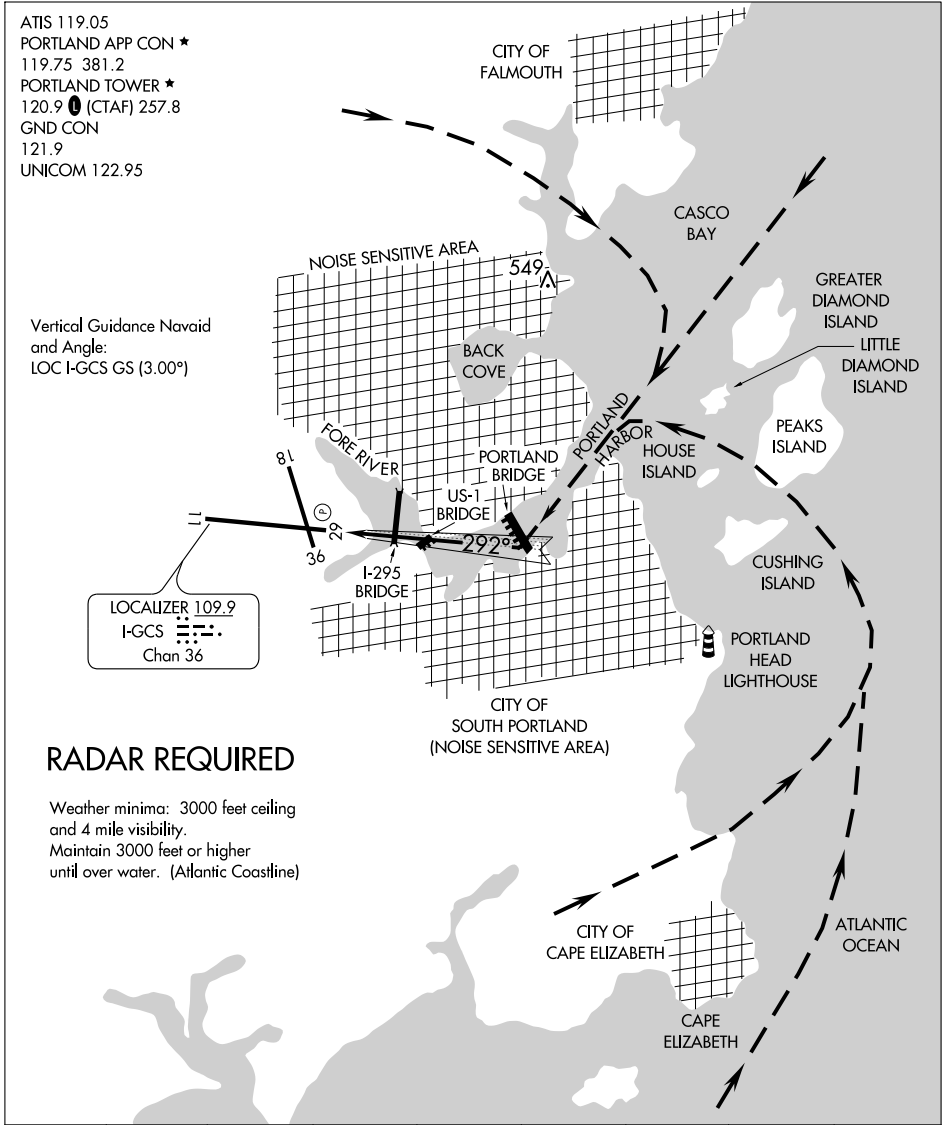
LOCALIZER 109.9
 I-GCS
 Chan 36

RADAR REQUIRED

Weather minima: 3000 feet ceiling
 and 4 mile visibility.
 Maintain 3000 feet or higher
 until over water. (Atlantic Coastline)

NE-1, 22 OCT 2009 to 19 NOV 2009

NE-1, 22 OCT 2009 to 19 NOV 2009



HARBOR VISUAL RWY 29

43°39'N-70°19'W

PORTLAND, MAINE
PORTLAND INTL JETPORT (PWM)