

POCATELLO, IDAHO

AL-327 (FAA)

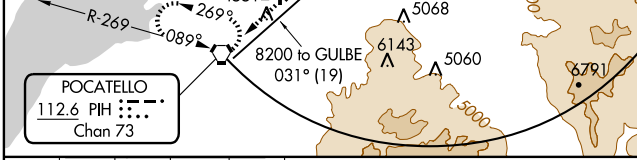
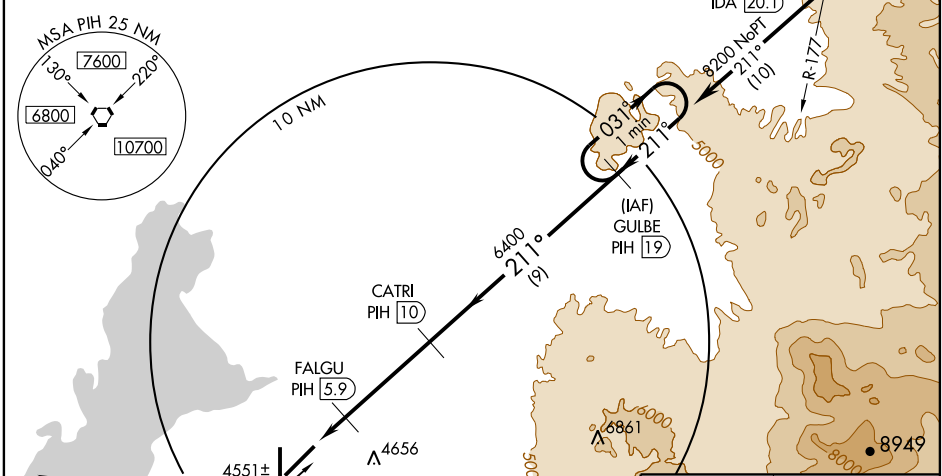
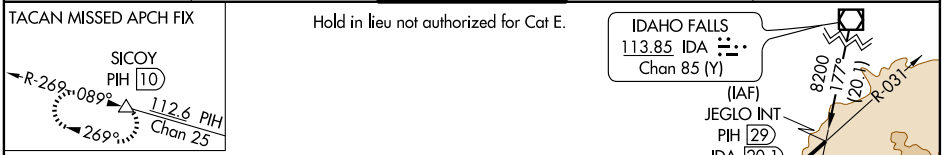
VORTAC PIH 112.6 Chan 73	APP CRS 211°	Rwy Idg TDZE Apt Elev 9060 4452 4452
---------------------------------------	------------------------	--

VOR/DME or TACAN RWY 21

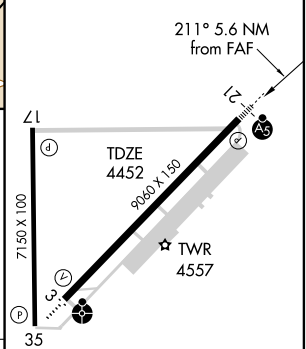
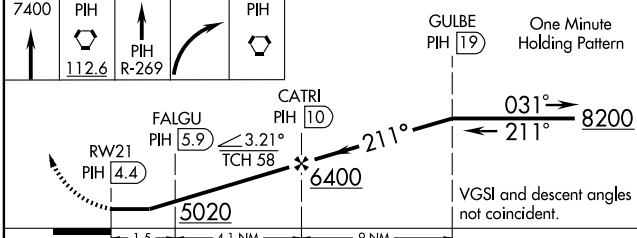
POCATELLO RGNL (PIH)

<p>V Circling NA Southeast of Rwy 3-21. For inoperative MALSR increase S-21 Cat. D and E visibility to 1½.</p>	<p>MALSR </p>	<p>MISSED APPROACH: Climb to 7400 direct PIH VORTAC, continue climb via PIH VORTAC R-269, then right turn direct PIH VORTAC and hold (TACAN aircraft continue via PIH VORTAC R-269 to SICOY/PIH 10 DME and hold W, right turns, 089° inbound).</p>
---	-------------------	--

<p>ATIS 135.625</p>	<p>SALT LAKE CENTER 128.35 239.25</p>	<p>POCATELLO TOWER* 119.1 (CTAF) 257.8</p>	<p>GND CON 121.9</p>	<p>UNICOM 122.95</p>
--------------------------------	--	---	---------------------------------	---------------------------------



ELEV 4452



CATEGORY	A	B	C	D	E
S-21	4840/24	388 (400-1/2)		4840/50	388 (400-1)
CIRCLING	4840-1 388 (400-1)	4920-1 468 (500-1)	4920-1½ 468 (500-1½)	5020-2	568 (600-2)

REIL Rwy 17
HIRL Rwy 3-21
MIRL Rwy 17-35

POCATELLO, IDAHO
Amdt 10A 09239

42°55'N - 112°36'W

VOR/DME or TACAN RWY 21

POCATELLO RGNL (PIH)

NW-1, 22 OCT 2009 to 19 NOV 2009

NW-1, 22 OCT 2009 to 19 NOV 2009