
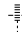



RNAV (GPS) RWY 21

POCATELLO RGNL (PIH)

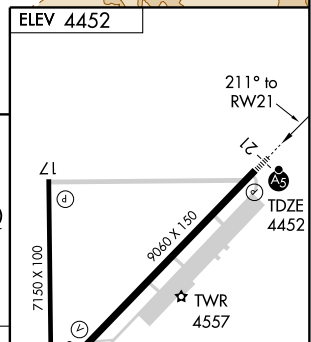
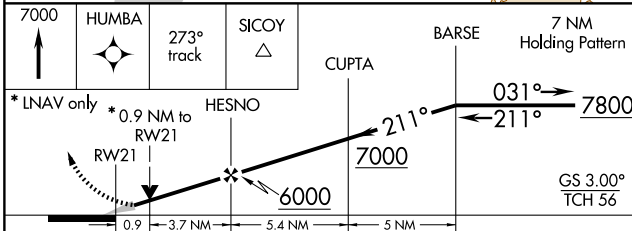
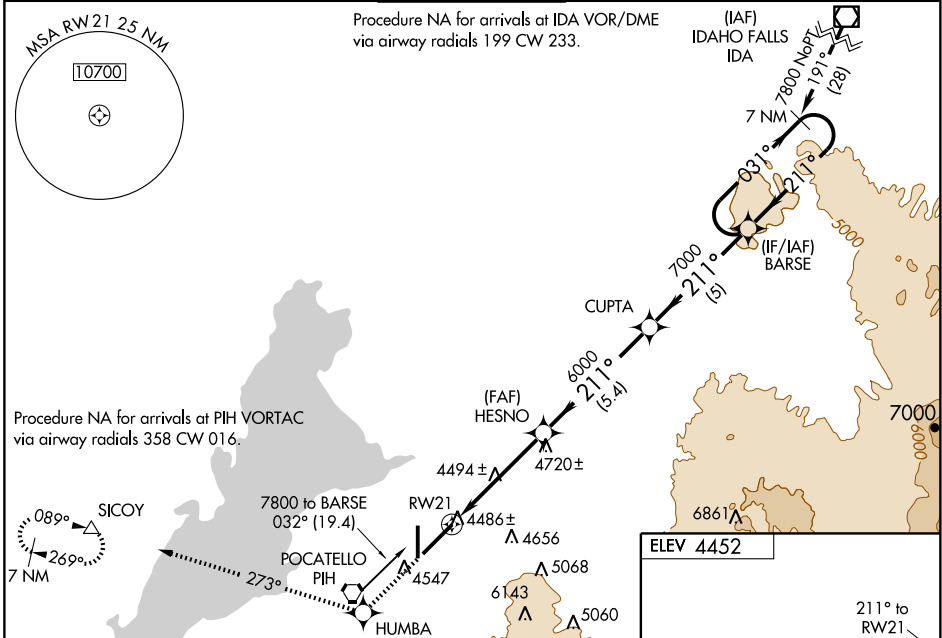
WAAS CH 78212 W21A	APP CRS 211°	Rwy Idg TDZE 4452 Apt Elev 4452	9060 4452 4452
--	------------------------	---	---

▼ Inoperative table does not apply to LNAV Cat D. For inoperative MALSR when using Idaho Falls altimeter setting, increase LPV all Cats visibility to 1 ¼ mile.
▲ For uncompensated Baro-VNAV systems, LNAV/VNAV NA below -23°C (-9°F) or above 39°C (102°F). DME/DME RNP-0.3 NA. When local altimeter setting not received, use Idaho Falls altimeter setting and increase all DA and MDA 140 feet; increase LPV all Cats, LNAV Cat C, and Circling Cat C and D visibility ¼ mile, increase LNAV/VNAV all Cats visibility ½ mile.
 Baro-VNAV and VDP NA when using Idaho Falls altimeter setting.
 Circling NA southeast of Rwy 3-21. Circling NA at night to Rwy 17-35.

MALSR
  

MISSED APPROACH:
 Climb to 7000 direct HUMBA and via 273° track to SICOY and hold.

ATIS 135.625	SALT LAKE CENTER 128.35 239.25	POCATELLO TOWER* 119.1 (CTAF) 0 257.8	GND CON 121.9	UNICOM 122.95
------------------------	--	--	-------------------------	-------------------------



CATEGORY	A	B	C	D
LPV DA	4652/24		200 (200-½)	
LNAV/VNAV DA	4797/40		345 (400-¾)	
LNAV MDA	4780/24 328 (400-½)		4780/50 328 (400-1)	
CIRCLING	4820-1 368 (400-1)	4920-1 468 (500-1)	4920-1½ 468 (500-1½)	5020-2 568 (600-2)

REIL Rwy 17
 HIRL Rwy 3-21
 MIRL Rwy 17-35

NW-1, 22 OCT 2009 to 19 NOV 2009

NW-1, 22 OCT 2009 to 19 NOV 2009