

ILS or LOC RWY 21

POCATELLO RGNL (PIH)

LOC/DME I-PIH 110.3 Chan 40	APP CRS 211°	Rwy Idg TDZE 9060 4452	Apt Elev 4452
--	------------------------	--	-------------------------

⚠ Circling NA southeast of Rwy 3-21.
⚠ For inoperative MALSR, increase S-ILS-21 Cat E visibility to RVR 4000, and S-LOC-21 Cat E visibility to RVR 5000. **Visibility CAT A/B/C/D, RVR 1800 authorized with the use of FD or AP or HUD to DA.

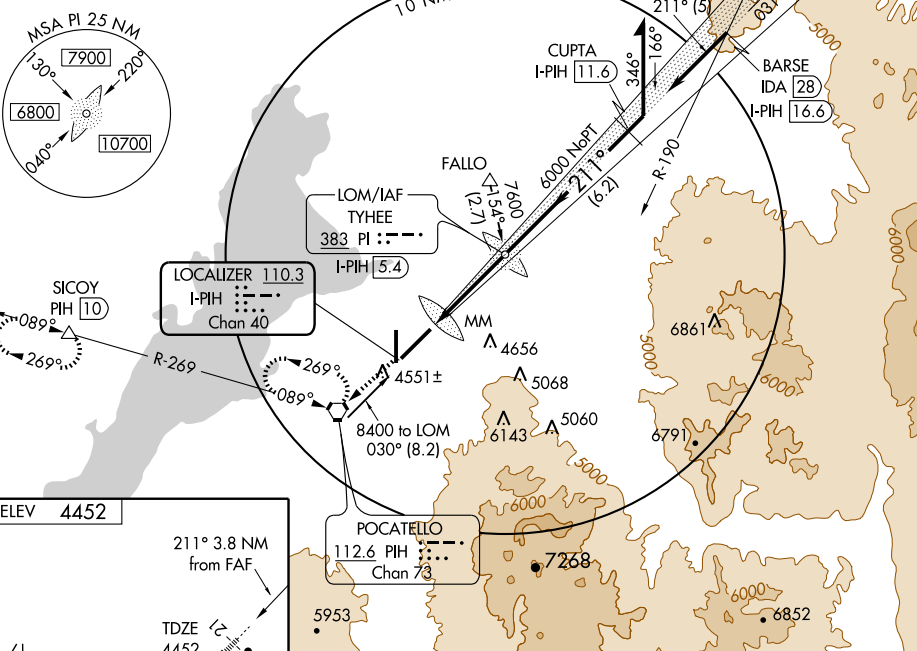


MISSED APPROACH: Climb to 7400 direct PIH VORTAC, continue climb via PIH VORTAC R-269, then right turn direct PIH VORTAC and hold (TACAN aircraft continue via PIH VORTAC R-269 to SICOY/ PIH 10 DME and hold W, right turns, 089° inbound).

ATIS 135.625	SALT LAKE CENTER 128.35 239.25	POCATELLO TOWER* 119.1 (CTAF) 0 257.8	GND CON 121.9	UNICOM 122.95
------------------------	--	--	-------------------------	-------------------------

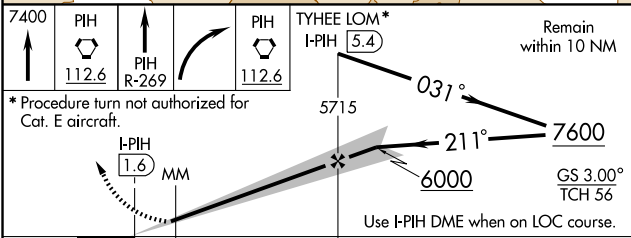
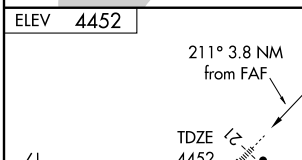
DME REQUIRED FOR IDA VOR/DME TRANSITION

DME or ADF REQUIRED



NW-1, 22 OCT 2009 to 19 NOV 2009

NW-1, 22 OCT 2009 to 19 NOV 2009



CATEGORY	A	B	C	D	E
S-ILS 21	** 4652/24 200 (200-1/2)				
S-LOC 21	4740/24	288 (300-1/2)		4740/40	288 (300-3/4)
CIRCLING	4820-1 368 (400-1)	4920-1 468 (500-1)	4920-1 1/2 468 (500-1 1/2)	5020-2	568 (600-2)