

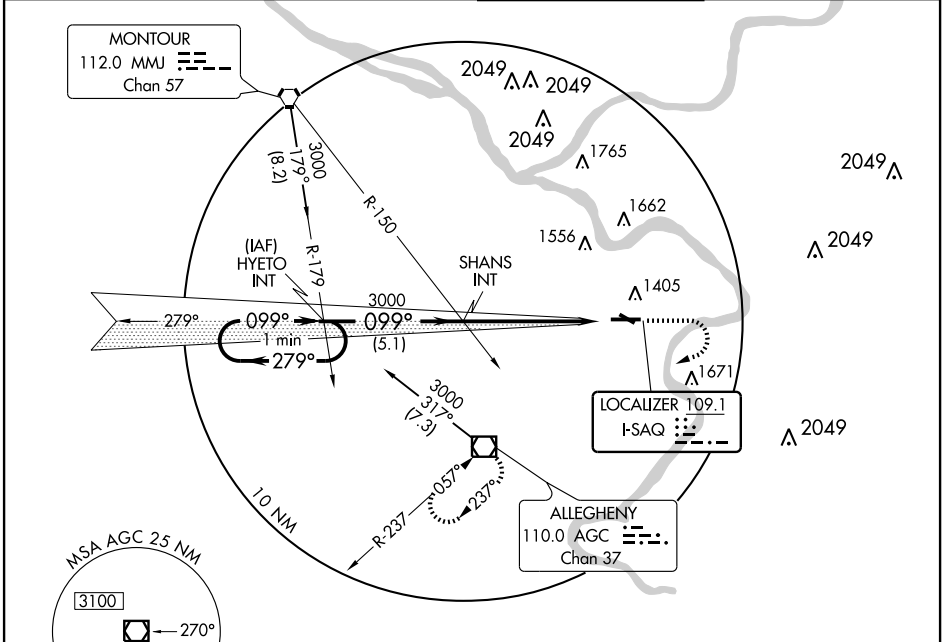
ILS RWY 10

PITTSBURGH / ALLEGHENY COUNTY (AGC)

LOC I-SAQ 109.1	APP CRS 099°	Rwy ldg 6501
		TDZE 1251
		Apt Elev 1252

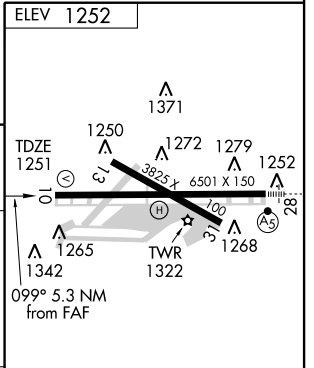
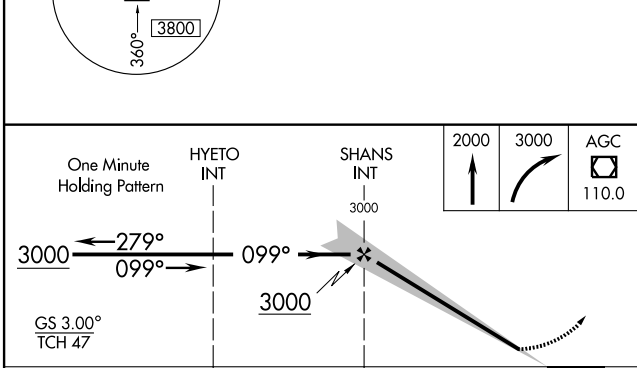
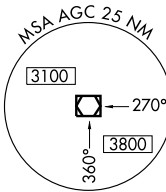
▽ MISSED APPROACH: Climb to 2000, then climbing right turn to 3000 direct AGC VOR/DME and hold.

ATIS 120.55	PITTSBURGH APP CON 119.35 285.57	ALLEGHENY TOWER 121.1 239.0	GND CON 121.7
-----------------------	--	---------------------------------------	-------------------------



NE-4, 22 OCT 2009 to 19 NOV 2009

NE-4, 22 OCT 2009 to 19 NOV 2009



CATEGORY	A	B	C	D
S-ILS 10		1451- $\frac{3}{4}$	200 (200- $\frac{3}{4}$)	
S-LOC 10	1740-1 489 (500-1)	1740-1 $\frac{1}{4}$ 489 (500-1 $\frac{1}{4}$)	1740-1 $\frac{1}{2}$ 489 (500-1 $\frac{1}{2}$)	
CIRCLING	1740-1 488 (500-1)	1740-1 $\frac{1}{2}$ 488 (500-1 $\frac{1}{2}$)	1820-2 568 (600-2)	

REIL Rwy 10, 13, and 31
HIRL Rwy 10-28 and 13-31

FAF to MAP 5.3 NM

Knots	60	90	120	150	180
Min:Sec	5:18	3:32	2:39	2:07	1:46

ILS RWY 10