

ROCKIES SEVEN DEPARTURE

SL-325 (FAA)

GREELEY-WELD COUNTY (GXY)
GREELEY, COLORADO

600Z MON 19 OCT 2009 22 00Z

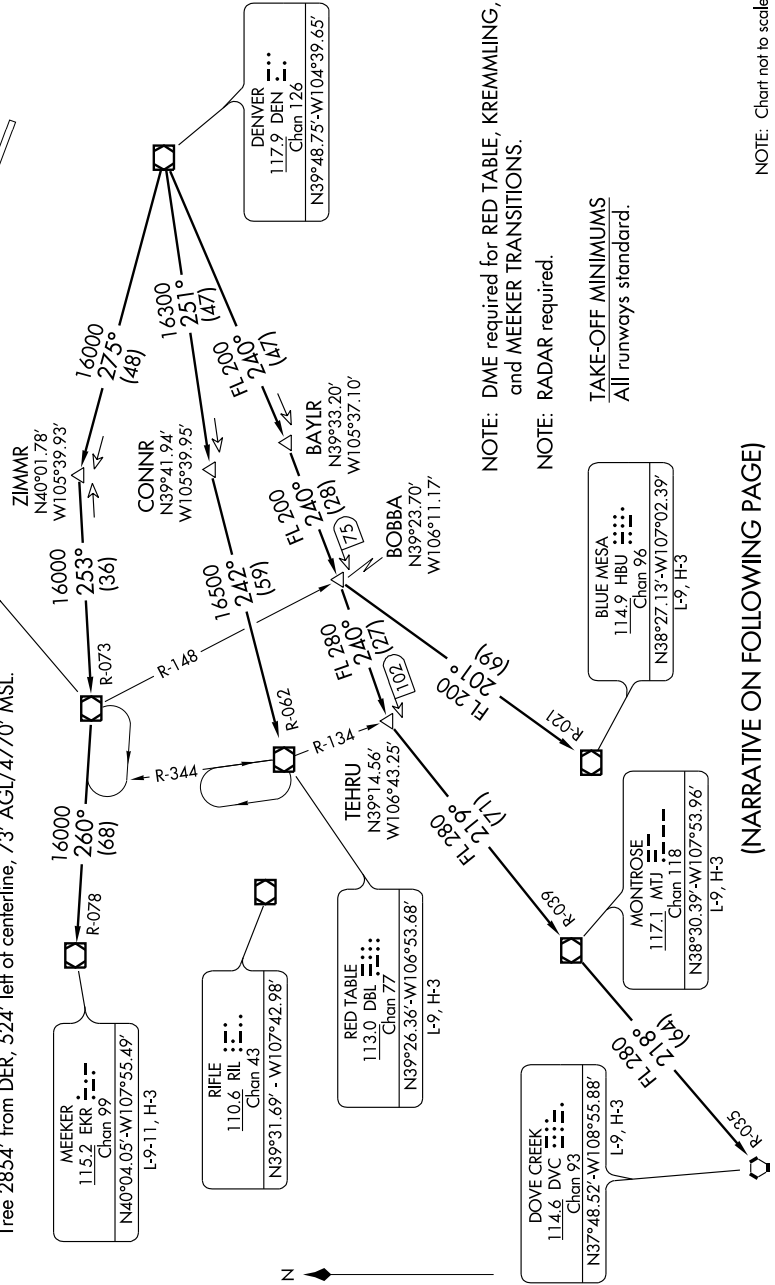
TAKE-OFF OBSTACLE NOTES

RWY 27: Tree 1634' from DER, 836' left of centerline, 56' AGL/4717' MSL.
 Fence 237' from DER, 422' right of centerline, 9' AGL/4670' MSL.
 Fence 99' from DER, 423' left of centerline, 4' AGL/4665' MSL.
 RWY 34: Multiple trees beginning 1860' from DER, 595' right of centerline, up to 67' AGL/4785' MSL.
 Tree 2854' from DER, 524' left of centerline, 73' AGL/4770' MSL.

CINC DEL
126.65
DENVER DEP CON
134.85 251.125



KREMMLING
113.8 RLG
Chan 85
N40°00.16'-W106°26.55'
L-9-11, H-3-5



NOTE: DME required for RED TABLE, KREMMLING, and MEERKER TRANSITIONS.
 NOTE: RADAR required.

TAKE-OFF MINIMUMS
All runways standard.

NOTE: Chart not to scale.

(NARRATIVE ON FOLLOWING PAGE)

ROCKIES SEVEN DEPARTURE