

GREELEY, COLORADO

AL-325 (FAA)

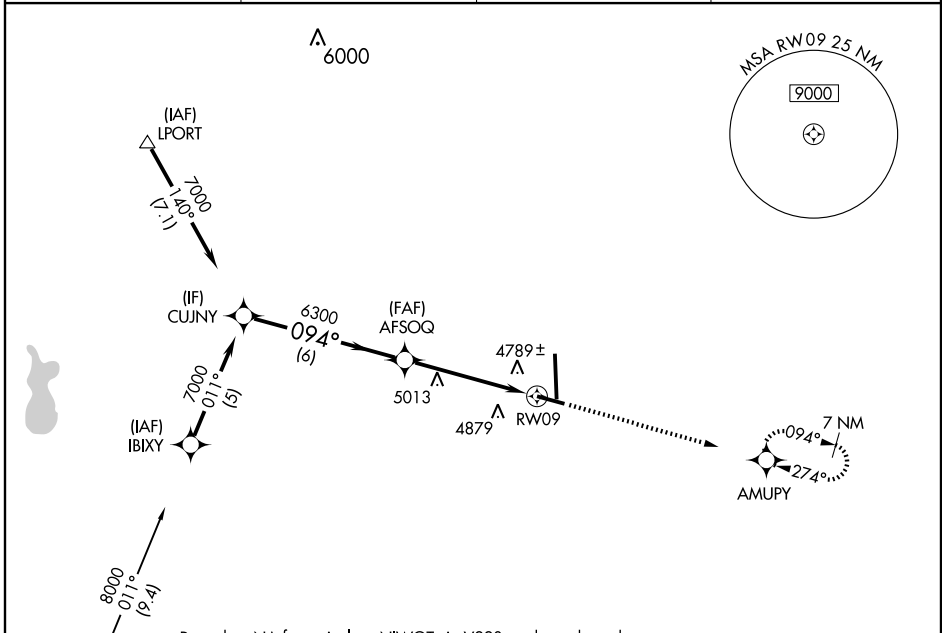
# RNAV (GPS) RWY 9

GREELEY-WELD COUNTY (GXY)

WAAS CH <b>62900</b> <b>W09A</b>	APP CRS <b>094°</b>	Rwy ldg TDZE Apt Elev	<b>5801</b> <b>4661</b> <b>4697</b>
--	------------------------	-----------------------------	---

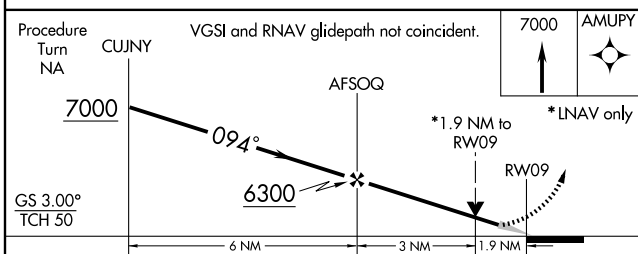
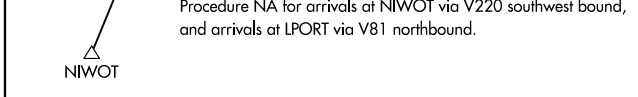
DME/DME RNP-0.3 NA. Baro-VNAV NA below -24°C (-11°F).		MISSED APPROACH: Climb to 7000 direct AMUPY and hold.	
--	--	---	--

AWOS-3 <b>135.175</b>	DENVER APP CON <b>134.85 251.125</b>	CLNC DEL <b>126.65</b>	UNICOM <b>122.8</b> (CTAF) <b>0</b>
--------------------------	---	---------------------------	--

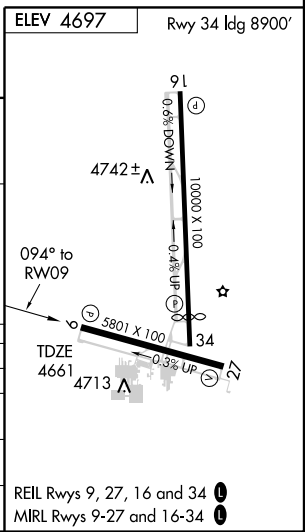


SW-1, 22 OCT 2009 to 19 NOV 2009

SW-1, 22 OCT 2009 to 19 NOV 2009



CATEGORY	A	B	C	D
LPV DA		491 1-3/4	250 (300-3/4)	
LNAV/VNAV DA		5201-2	540 (600-2)	
LNAV MDA	5320-1	659 (700-1)	5320-1 3/4 659 (700-1 3/4)	5320-2 659 (700-2)
CIRCLING		5320-2	623 (700-2)	



GREELEY, COLORADO  
Orig 08213

40°26'N-104°38'W

GREELEY-WELD COUNTY (GXY)  
**RNAV (GPS) RWY 9**

REIL Rwy 9, 27, 16 and 34 **0**  
MIRL Rwy 9-27 and 16-34 **0**