

RNAV (GPS) RWY 34

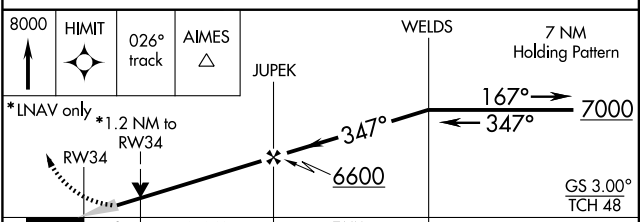
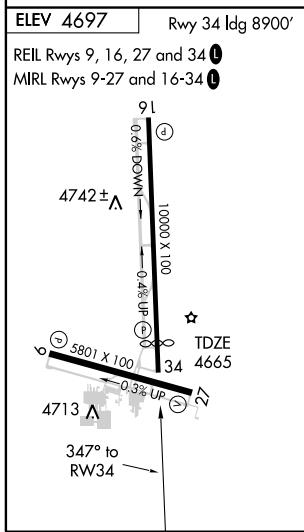
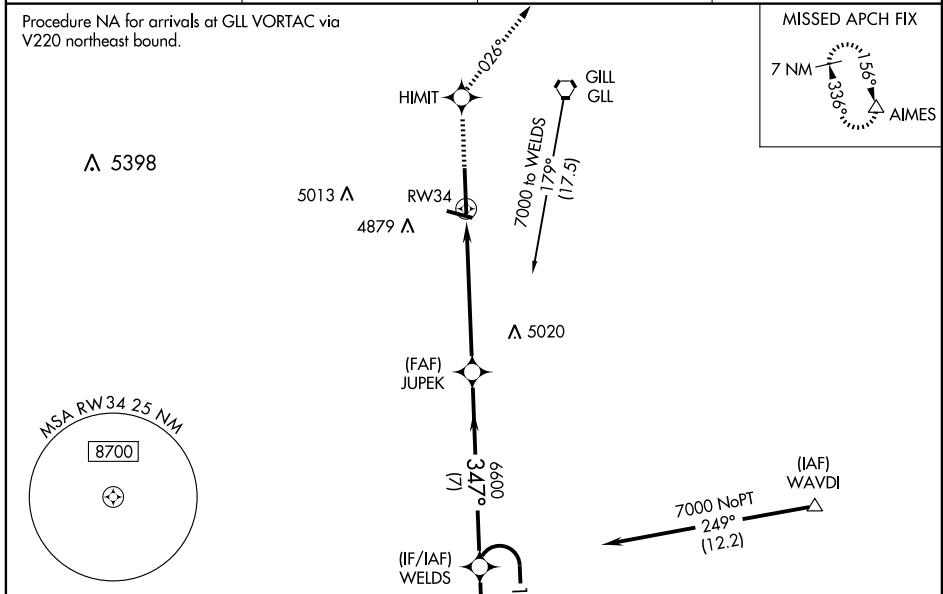
GREELEY-WELD COUNTY (GXY)

WAAS CH 69607 W34A	APP CRS 347°	Rwy Idg TDZE Apt Elev	8900 4665 4697
--	------------------------	-----------------------------	---

⚠ For uncompensated Baro-VNAV systems, LNAV/VNAV NA below -24°C (-11°F) or above 39°C (102°F). DME/DME RNP -0.3 NA. VDP and Baro-VNAV NA when using Fort Collins-Loveland Muni altimeter setting. When local altimeter setting not received, use Fort Collins-Loveland Muni altimeter setting and increase LPV DA to 5000 feet and visibility all Cats ¼ mile. Increase LNAV/VNAV DA to 5073 feet and visibility all Cats ¼ mile. Increase all MDA 100 feet and LNAV visibility Cats C and D ¼ mile. Increase Circling visibility Cat C ¼ mile.

MISSED APPROACH: Climb to 8000 direct HIMIT and via 026° track to AIMES and hold, continue climb-in-hold to 8000.

AWOS-3 135.175	DENVER APP CON 134.85 251.125	CLNC DEL 126.65	UNICOM 122.8 (CTAF) 0
--------------------------	---	---------------------------	--



CATEGORY	A	B	C	D
LPV DA	4915-1		250 (300-1)	
LNAV/VNAV DA	4988-1¼		323 (300-1¼)	
LNAV MDA	5100-1	435 (500-1)	5100-1¼ 435 (500-1¼)	5100-1½ 435 (500-1½)
CIRCLING	5120-1 423 (500-1)	5160-1 463 (500-1)	5200-1½ 503 (600-1½)	5260-2 563 (600-2)

SW-1, 22 OCT 2009 to 19 NOV 2009

SW-1, 22 OCT 2009 to 19 NOV 2009