

WAAS CH <b>86808</b> W27A	APP CRS <b>275°</b>	Rwy Idg TDZE Apt Elev	<b>5801</b> <b>4650</b> <b>4697</b>
---------------------------------	------------------------	-----------------------------	---

# RNAV (GPS) RWY 27

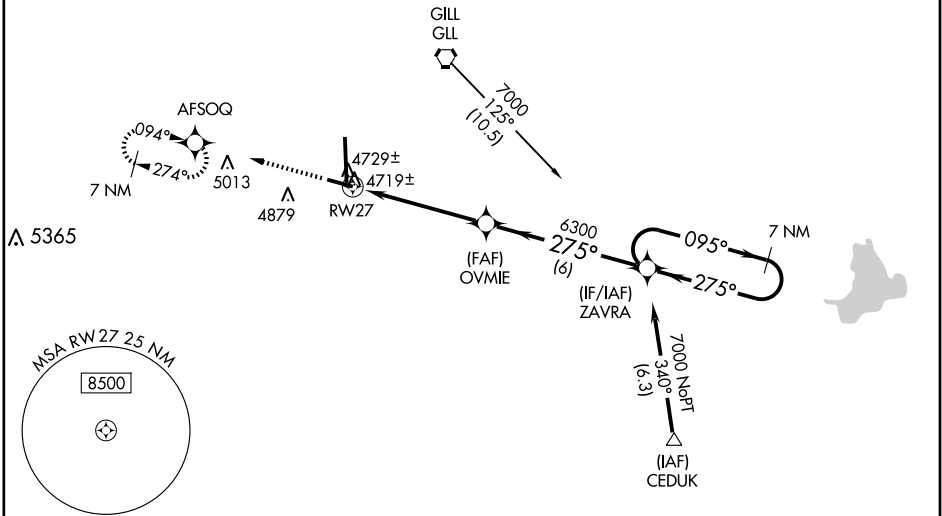
GREELEY-WELD COUNTY (GXY)

**⚠** For uncompensated Baro-VNAV systems, LNAV/VNAV NA below -24°C (-11°F) or above 39°C (102°F). DME/DME RNP -0.3 NA.  
**⚠** VDP and Baro-VNAV NA when using Fort Collins-Loveland Muni altimeter setting. When local altimeter setting not received, use Fort Collins-Loveland Muni altimeter setting and increase LPV DA to 4985 and visibility all Cats ½ mile. Increase LNAV/VNAV DA to 5074 and visibility all Cats ¼ mile. Increase all MDA 100 feet and LNAV visibility Cat C ¼ mile and Cat D ½ mile. Increase Circling Cat C visibility ¼ mile.

MISSED APPROACH: Climb to 8500 direct AFSOQ and hold, continue climb-in-hold to 8500.

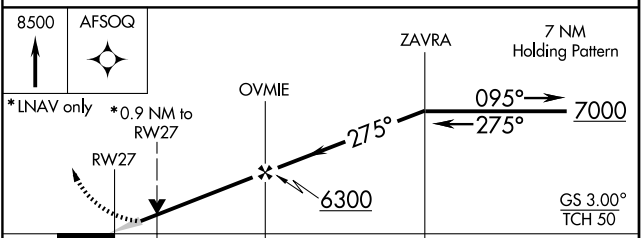
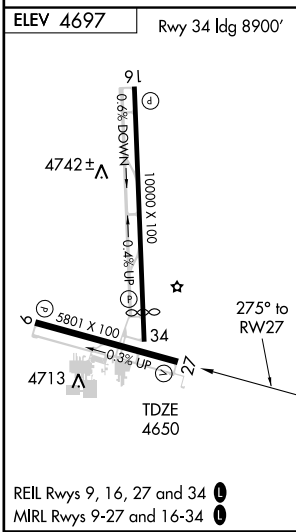
AWOS-3 <b>135,175</b>	DENVER APP CON <b>134.85 251.125</b>	CLNC DEL <b>126.65</b>	UNICOM <b>122.8</b> (CTAF) <b>📻</b>
--------------------------	---	---------------------------	--

Procedure NA for arrivals at GLL VORTAC via V220 west bound and V4 northwest bound.



SW-1, 22 OCT 2009 to 19 NOV 2009

SW-1, 22 OCT 2009 to 19 NOV 2009



CATEGORY	A	B	C	D
LPV DA		4900-3/4	250 (300-3/4)	
LNAV/VNAV DA		4989-1 1/4	339 (300-1 1/4)	
LNAV MDA		4980-1	330 (300-1)	
CIRCLING	5120-1 423 (500-1)	5160-1 463 (500-1)	5200-1 1/2 503 (600-1 1/2)	5260-2 563 (600-2)