

# PIKES FOUR DEPARTURE

SL-325 (FAA)

GREELEY-WELD COUNTY (GXY)  
GREELEY, COLORADO

CLINC DEL  
126.65  
DENVER DEP CON  
134.85 251.125



**TAKE-OFF MINIMUMS**  
All runways standard.

DENVER  
117.9 DEN  
Chan 126  
N39°48.75'-W104°39.65'

ADANE  
N38°54.91'  
W104°23.94'

HUGO  
112.1 HGO  
Chan 58

BLACK FOREST  
112.5 BRK  
Chan 72

DRAKE  
N38°36.40'  
W104°24.85'

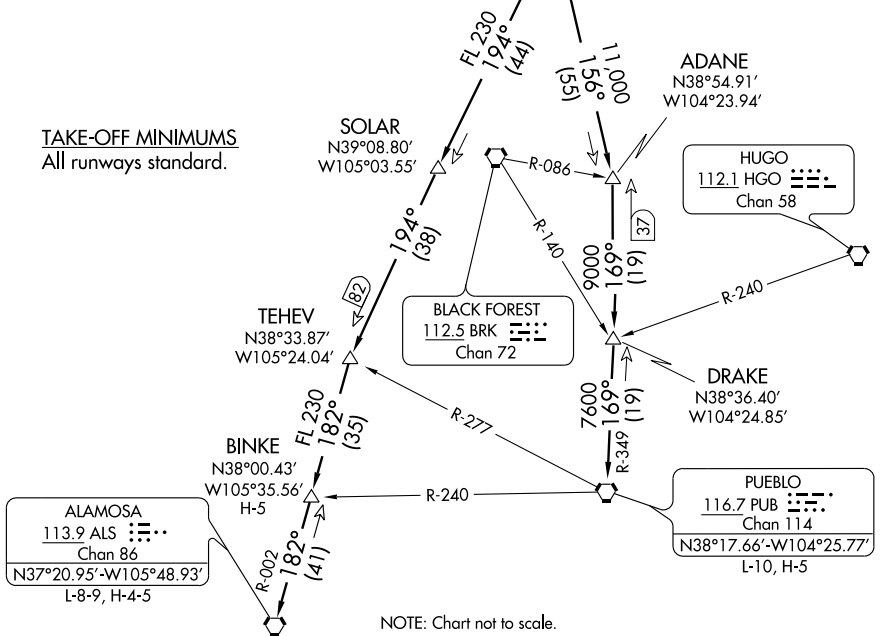
PUEBLO  
116.7 PUB  
Chan 114  
N38°17.66'-W104°25.77'  
L-10, H-5

ALAMOSA  
113.9 ALS  
Chan 86  
N37°20.95'-W105°48.93'  
L-8-9, H-4-5

TEHEV  
N38°33.87'  
W105°24.04'

BINKE  
N38°00.43'  
W105°35.56'  
H-5

SOLAR  
N39°08.80'  
W105°03.55'



NOTE: Chart not to scale.

## DEPARTURE ROUTE DESCRIPTION

Fly assigned heading and altitude for radar vectors to assigned transition. Expect filed altitude 10 minutes after departure.

**LOST COMMUNICATIONS:** If no transmissions are received within one minute after departure, maintain assigned heading until 7000 feet, then climb to filed altitude via direct DEN VOR/DME, thence via assigned transition. If filed altitude is above 10,000 feet, cross DEN VOR/DME at or above 11,000 feet.

**ALAMOSA TRANSITION (PIKES4.ALS):** From over DEN VOR/DME via DEN R-194 and ALS R-002 to ALS VORTAC.

**BINKE TRANSITION (PIKES4.BINKE):** From over DEN VOR/DME via DEN R-194 and ALS R-002 to BINKE INT.

**PUEBLO TRANSITION (PIKES4.PUB):** From over DEN VOR/DME via DEN R-156 and PUB R-349 to PUB VORTAC.

# PIKES FOUR DEPARTURE

SW-1, 22 OCT 2009 to 19 NOV 2009

SW-1, 22 OCT 2009 to 19 NOV 2009