

LOC/DME I-DCI <b>110.3</b> Chan 40	APP CRS <b>347°</b>	Rwy ldg <b>8900</b> TDZE <b>4665</b> Apt Elev <b>4697</b>
--	------------------------	---

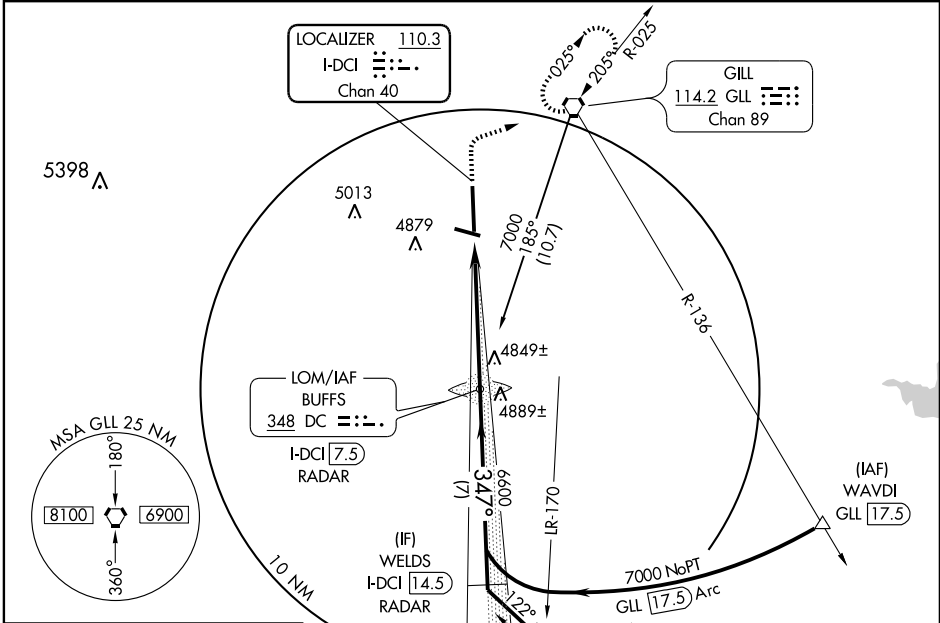
# ILS or LOC RWY 34

GREELEY-WELD COUNTY (GXY)

**▽** Use I-DCI DME when on localizer course.  
**▲** When local altimeter setting not received, use Fort Collins-Loveland Muni altimeter setting and increase DA to 4950 feet and all visibility ¼ mile; increase all MDA 100 feet and Cat C/D visibility ¼ mile.  
 VDP NA when using Fort Collins-Loveland Muni altimeter setting.

**MISSED APPROACH:** Climb to 5200 then climbing right turn to 7000 direct GLL VORTAC and hold, continue climb-in-hold to 7000.

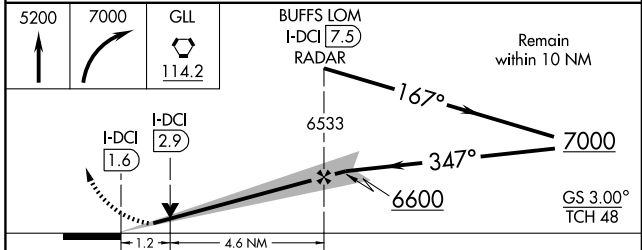
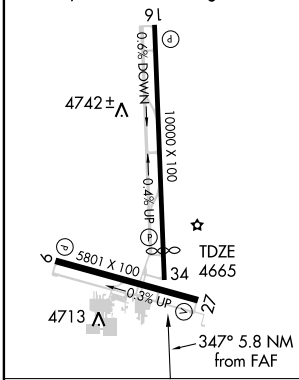
AWOS-3 <b>135.175</b>	DENVER APP CON <b>134.85 251.125</b>	CLNC DEL <b>126.65</b>	UNICOM <b>122.8</b> (CTAF) <b>①</b>
--------------------------	---	---------------------------	--



SW-1, 22 OCT 2009 to 19 NOV 2009

SW-1, 22 OCT 2009 to 19 NOV 2009

**ELEV 4697** Rwy 34 ldg 8900'  
 REIL Rws 9, 16, 27 and 34 **①**  
 MIRL Rws 9-27 and 16-34 **②**



Knots	60	90	120	150	180
Min:Sec	5:48	3:52	2:54	2:19	1:56

CATEGORY	A	B	C	D
S-ILS 34	4865-¾ 200 (200-¾)			
S-LOC 34	5100-1	435 (500-1)	5100-1½ 435 (500-1½)	5100-1½ 435 (500-1½)
CIRCLING	5120-1 423 (500-1)	5160-1 463 (500-1)	5200-1½ 503 (600-1½)	5260-2 563 (600-2)