

PIERRE, SOUTH DAKOTA

AL-324 (FAA)

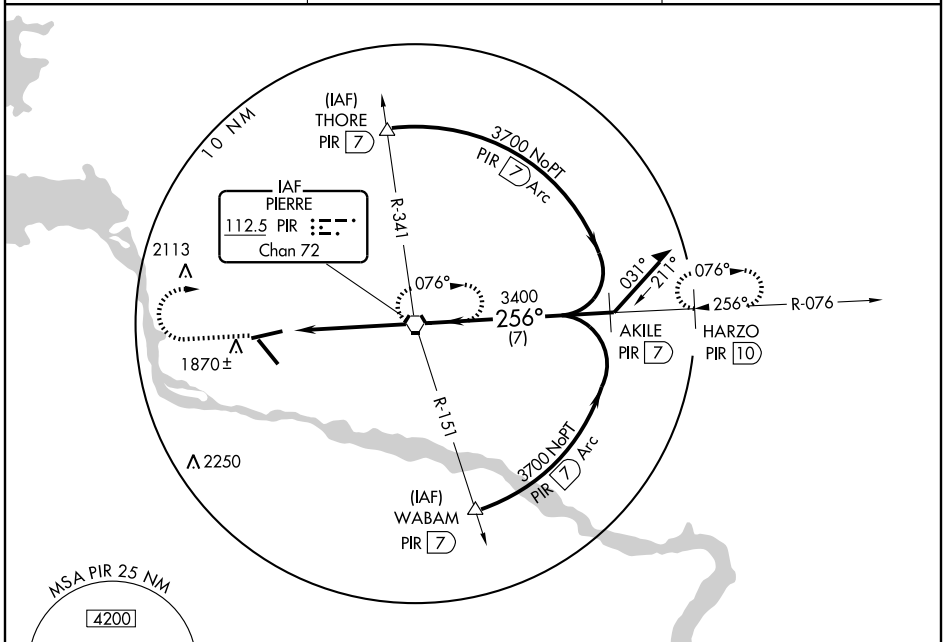
# VOR or TACAN RWY 25

PIERRE RGNL (PIR)

VORTAC PIR <b>112.5</b> Chan 72	APP CRS <b>256°</b>	Rwy ldg TDZE Apt Elev <b>6881</b> <b>1725</b> <b>1744</b>
---------------------------------------	------------------------	--

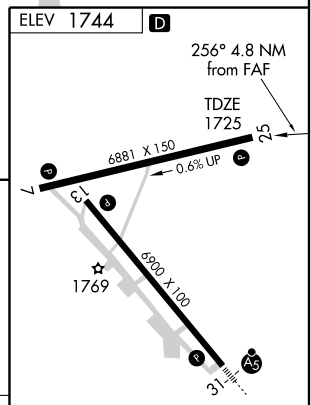
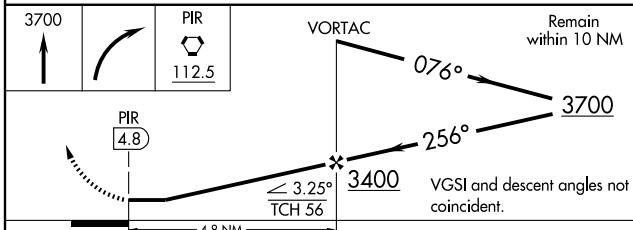
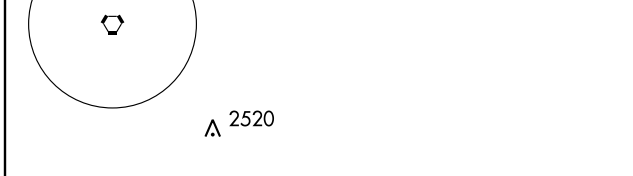
**MISSED APPROACH:** Climb to 3700 then right turn direct PIR VORTAC and hold. (TACAN aircraft continue via PIR R-076 to HARZO 10 DME and hold east, right turns, 256° inbound)

ASOS <b>119.025</b>	MINNEAPOLIS CENTER <b>125.1 269.1</b>	CTAF <b>122.7</b>
------------------------	--	----------------------



NC-1, 22 OCT 2009 to 19 NOV 2009

NC-1, 22 OCT 2009 to 19 NOV 2009



CATEGORY	A	B	C	D
S-25	2120-1 395 (400-1)			2120-1½ 395 (400-1½)
CIRCLING	2240-1	496 (500-1)	2260-1½ 516 (600-1½)	2300-2 556 (600-2)

REIL Rwy 7, 13, and 25	1
HIRL Rwy 7-25 and 13-31	1
FAF to MAP 4.8 NM	
Knots	60 90 120 150 180
Min:Sec	4:48 3:12 2:24 1:55 1:36

PIERRE, SOUTH DAKOTA  
Orig-B 09295

44° 23' N - 100° 17' W

# VOR or TACAN RWY 25

PIERRE RGNL (PIR)