

PIERRE, SOUTH DAKOTA

AL-324 (FAA)

RNAV (GPS) RWY 7

PIERRE RGNL (PIR)

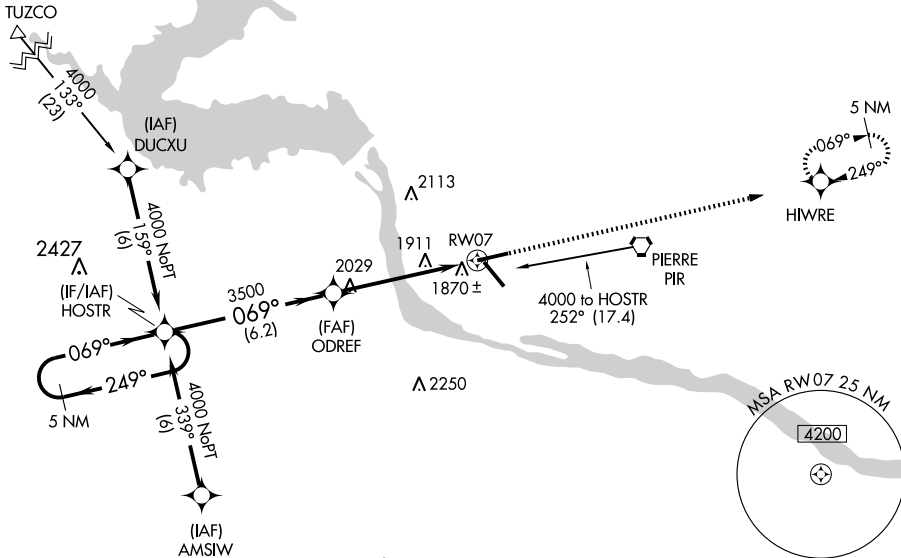
WAAS CH 45804 W07A	APP CRS 069°	Rwy Idg TDZE Apt Elev	6881 1744 1744
--	------------------------	-----------------------------	---

For uncompensated Baro-VNAV systems, LNAV/VNAV NA below -18°C (0°F) or above 45°C (113°F). DME/DME RNP-0.3 NA. Visibility reduction by helicopters NA.

MISSED APPROACH: Climb to 4000 direct HIWRE and hold.

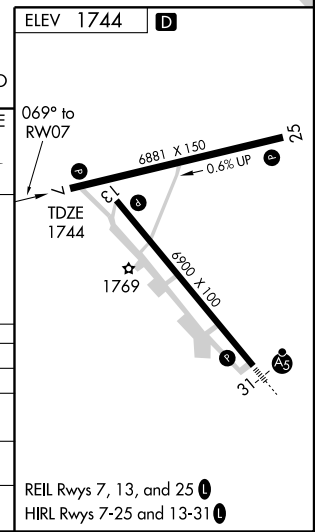
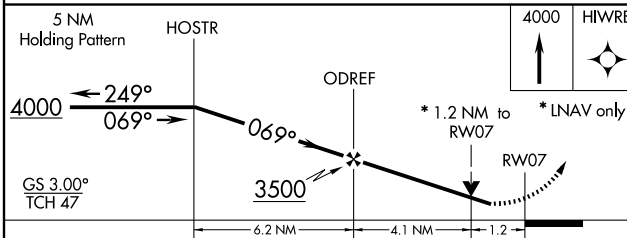
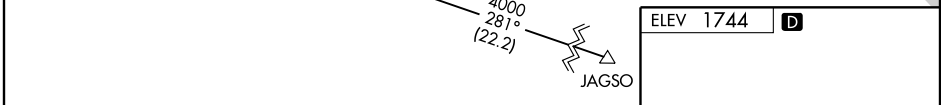
ASOS 119.025	MINNEAPOLIS CENTER 125.1 269.1	CTAF 122.7 0
------------------------	--	------------------------

Procedure NA for arrivals at PIR VORTAC via V26 northeast bound.



NC-1, 22 OCT 2009 to 19 NOV 2009

NC-1, 22 OCT 2009 to 19 NOV 2009



CATEGORY	A	B	C	D
LPV DA		2057-1	313 (400-1)	
LNAV/VNAV DA		2170-1½	426 (500-1½)	
LNAV MDA	2180-1	436 (500-1)	2180-1¼ 436 (500-1¼)	2180-1½ 436 (500-1½)
CIRCLING	2240-1	496 (500-1)	2260-1½ 516 (600-1½)	2300-2 556 (600-2)

PIERRE, SOUTH DAKOTA
Amdt 2 09295

44°23'N-100°17'W

PIERRE RGNL (PIR) RNAV (GPS) RWY 7

REIL Rwy 7, 13, and 25 0
HIRL Rwy 7-25 and 13-31 0