

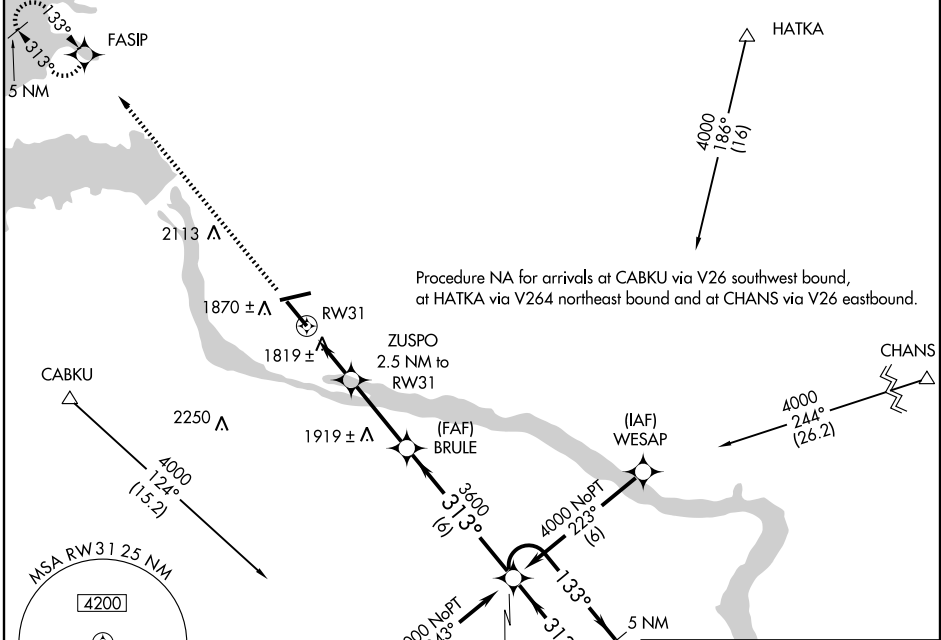
RNAV (GPS) RWY 31

PIERRE RGNL (PIR)

WAAS Chan 65623 W31A	APP CRS 313°	Rwy Idg TDZE 1720 Apt Elev 1744	6900
-----------------------------------	------------------------	---	-------------

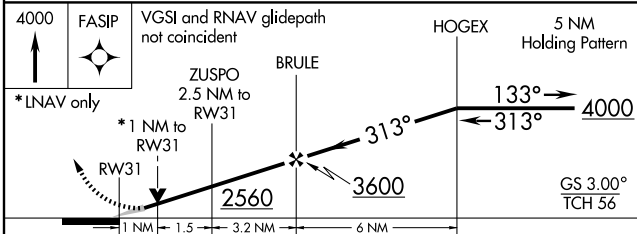
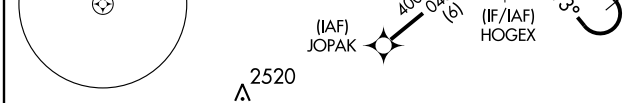
<p>▼ DME/DME RNP-0.3 NA. Baro-VNAV NA below -18°C (0°F). For inoperative MALSRL increase LPV visibility to ¾ all Cats, and LNAV Cat D visibility to 1¼.</p>	<p>MALSRL</p>	<p>MISSED APPROACH: Climb to 4000 direct FASIP and hold.</p>
--	---------------	--

ASOS 119.025	MINNEAPOLIS CENTER 125.1 269.1	CTAF 122.7
------------------------	--	----------------------



NC-1, 22 OCT 2009 to 19 NOV 2009

NC-1, 22 OCT 2009 to 19 NOV 2009



CATEGORY	A	B	C	D
LPV DA	1970-½		250 (300-½)	
LNAV/VNAV DA	2115-¾		395 (400-¾)	
LNAV MDA	2080-½		360 (400-½)	
CIRCLING	2240-1¼		2260-1½	
	496 (500-1¼)		516 (600-1½)	
			2080-1	
			360 (400-1)	
			2300-2	
			556 (600-2)	

