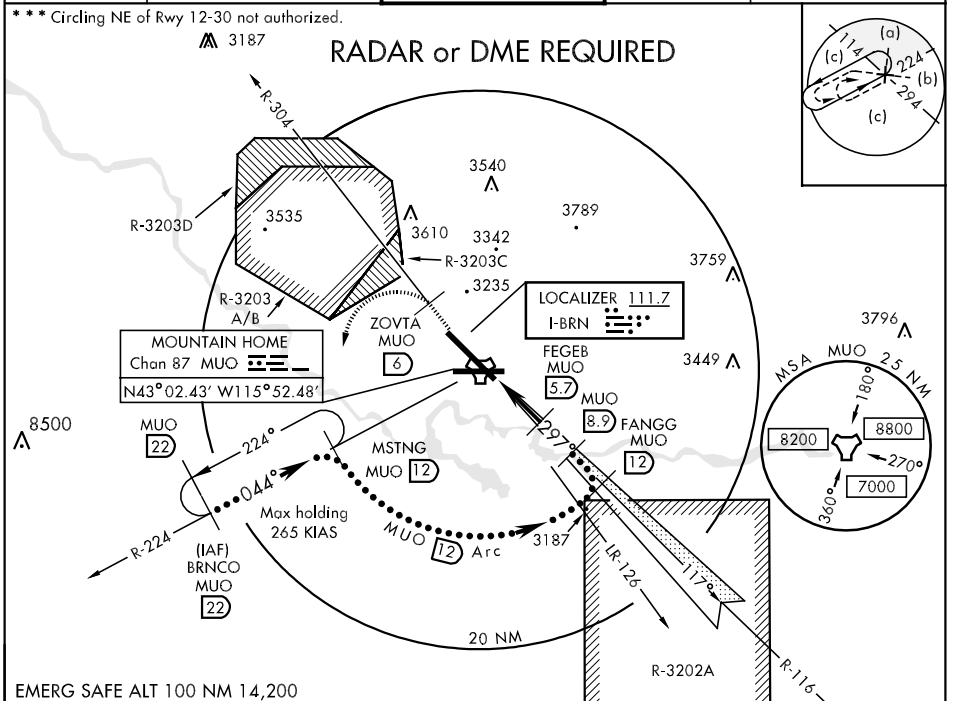


LOC I-BRN 111.7	APCH CRS 297°	Rwy Idg 13,500 TDZE 2996 Arpt Elev 2996	JAL-323 [USAF]	MOUNTAIN HOME AFB (KMUO)
---------------------------	-------------------------	--	----------------	--------------------------

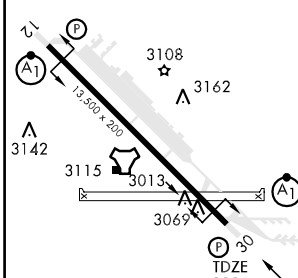
* When ALS inop, increase CAT CDE RVR to 40 and vis to 3/4 mile.
 ** When ALS inop, increase CAT C RVR to 60 and vis to 1 1/4 miles, CAT D vis to 1 1/2 miles, CAT E vis to 1 3/4 miles.

ATIS 273.5	MOUNTAIN HOME APP CON 124.8 259.1	MOUNTAIN HOME TOWER 133.85 253.5	GND CON 120.5 275.8	CLNC DEL 127.1 290.425
----------------------	---	--	-------------------------------	----------------------------------

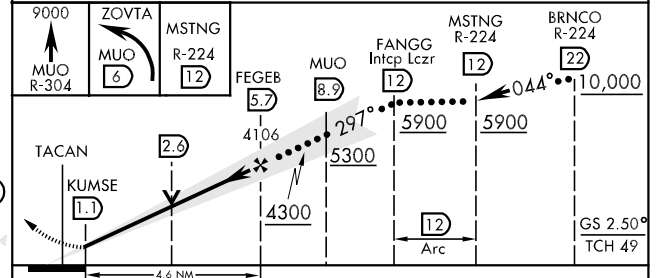


EMERG SAFE ALT 100 NM 14,200

ELEV 2996



FAF to MAP 4.6 NM					
Knots	120	140	160	180	200
Min:Sec	2:19	1:59	1:44	1:33	1:24



CATEGORY	C	D	E
S-ILS 30*	3196/24	200 (200-1/2)	
S-LOC 30**	3460/40 464 (500-3/4)	3460/50 464 (500-1)	3460/60 464 (500-1 1/4)
CIRCLING***	3520-1 1/2 524 (600-1 1/2)	3560-2	564 (600-2)

NW-1, 22 OCT 2009 to 19 NOV 2009

NW-1, 22 OCT 2009 to 19 NOV 2009