

TIRON-SEVEN DEPARTURE (TIRON7)

SH-321 [USAF]

LUKE AFB (KLUF)

GLENDALE, ARIZONA

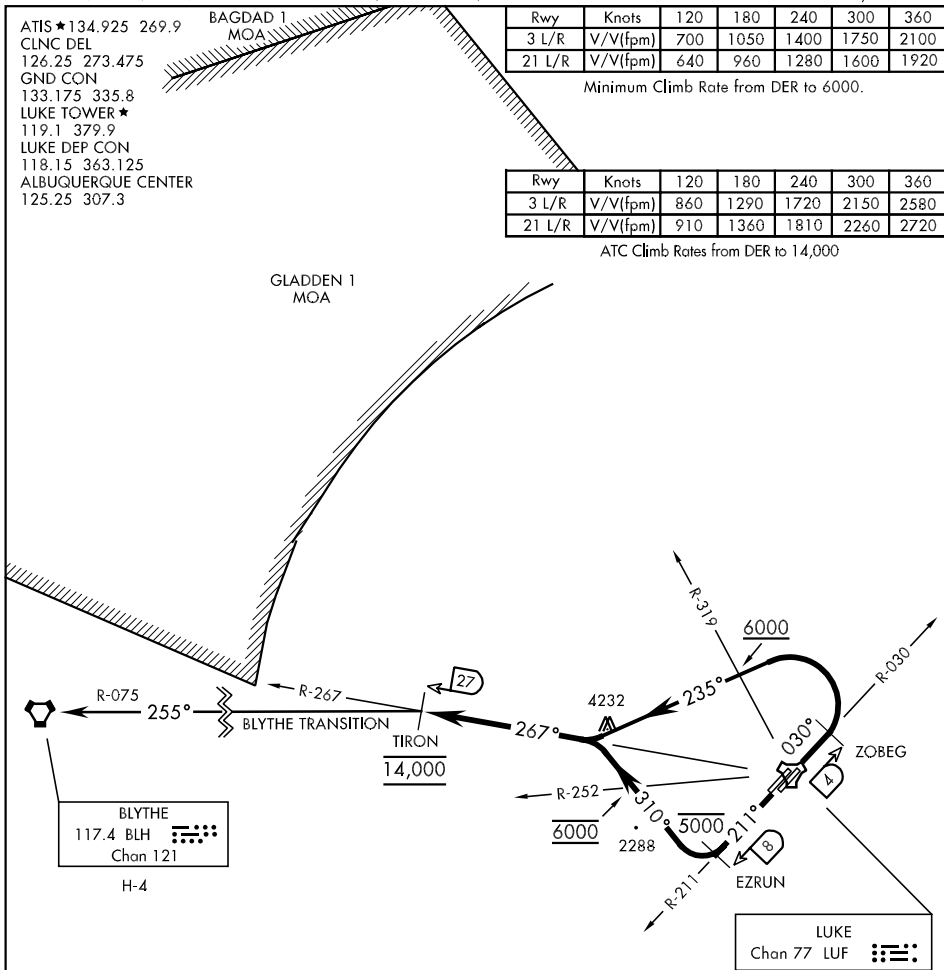
ATIS ★ 134.925 269.9
 CLNC DEL
 126.25 273.475
 GND CON
 133.175 335.8
 LUKE TOWER ★
 119.1 379.9
 LUKE DEP CON
 118.15 363.125
 ALBUQUERQUE CENTER
 125.25 307.3

Rwy	Knots	120	180	240	300	360
3 L/R	V/V(fpm)	700	1050	1400	1750	2100
21 L/R	V/V(fpm)	640	960	1280	1600	1920

Minimum Climb Rate from DER to 6000.

Rwy	Knots	120	180	240	300	360
3 L/R	V/V(fpm)	860	1290	1720	2150	2580
21 L/R	V/V(fpm)	910	1360	1810	2260	2720

ATC Climb Rates from DER to 14,000



SW-4, 22 OCT 2009 to 19 NOV 2009

SW-4, 22 OCT 2009 to 19 NOV 2009



DEPARTURE ROUTE DESCRIPTION

TAKE-OFF RWY 3 L/R: Climb tracking 030°. Abeam LUF TACAN R-030/04 DME (ZOBEG) turn left heading 235° to intercept and proceed via LUF R-267 to LUF 27 DME (TIRON). Cross LUF R-319 at or above 6000. Cross TIRON at 14,000 (or as assigned by ATC). Then via assigned route or transition.

TAKE-OFF RWY 21 L/R: Climb tracking 211°. Abeam LUF TACAN R-211/08 DME (EZRUN) turn right heading 310° to intercept and proceed via LUF R-267 to LUF 27 DME (TIRON). Cross abeam EZRUN at or below 5000. Cross LUF R-252 at 6000, Cross TIRON at 14,000 (or as assigned by ATC). Then via assigned route or transition.

BLYTHE TRANSITION (TIRON7•BLH): Via the BLH VORTAC R-075 to BLH.

TIRON-SEVEN DEPARTURE (TIRON7)

GLENDALE, ARIZONA

LUKE AFB (KLUF)