

LUKE-ONE DEPARTURE (LUKE1•DRK)

GLENDALE, ARIZONA

Rwy	Knots	120	180	240	300	360
† 3L	⊙ V/V(fpm)	670	1000	1340	1670	2000
† 3R	⊙ V/V(fpm)	670	1010	1340	1680	2010
*21L/R	⊙ V/V(fpm)	860	1290	1720	2150	2580

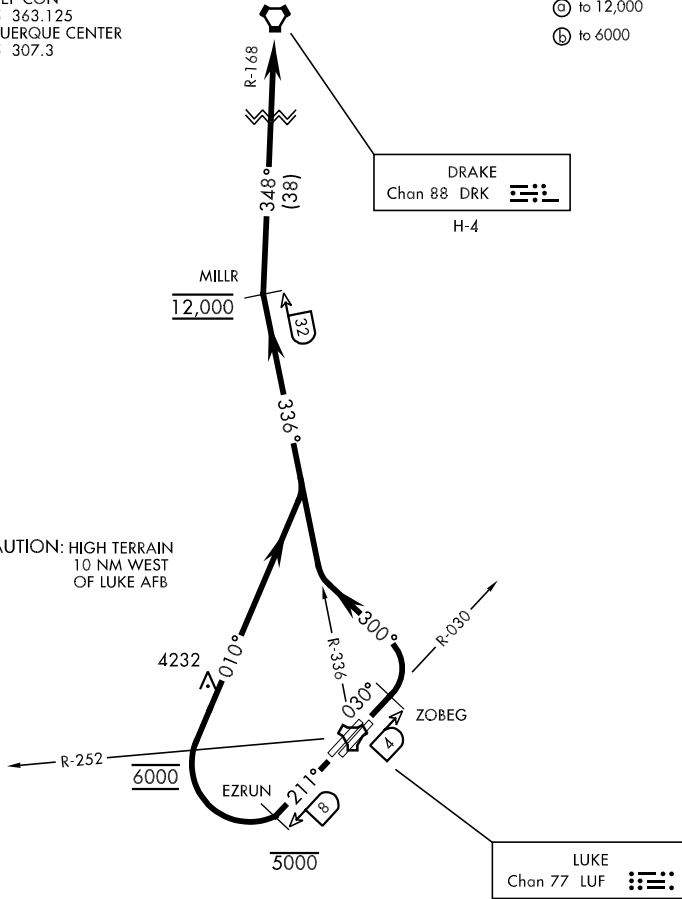
ATIS ★ 134.925 269.9
 CLNC DEL
 126.25 273.475
 GND CON
 133.175 335.8
 LUKE TOWER ★
 119.1 379.9
 LUKE DEP CON
 118.15 363.125
 ALBUQUERQUE CENTER
 125.25 307.3

SH-321 [USAF]

* Minimum † ATC Climb Rate

⊙ to 12,000

Ⓢ to 6000



SW-4, 22 OCT 2009 to 19 NOV 2009

SW-4, 22 OCT 2009 to 19 NOV 2009

DEPARTURE ROUTE DESCRIPTION

TAKE-OFF RWY 3 L/R: Climb on a track of 030°. Abeam ZOBEG (LUF R-030/04) turn left and track 300° to intcp and proceed via LUF R-336 to MILLR (LUF R-336/32) then via DRK R-168 to DRK. Cross MILLR at and maintain 12,000 or as assigned by ATC.

TAKE-OFF RWY 21 L/R: Climb on a track of 211°. Abeam EZRUN (LUF R-211/08) turn right to track 010° to intcp and proceed via LUF R-336 to MILLR (LUF R-336/32) then via DRK R-168 to DRK. Cross 8 DME at or below 5000, cross LUF R-252 at 6000, cross MILLR at and maintain 12,000 or as assigned by ATC.

LUKE-ONE DEPARTURE (LUKE1•DRK)

GLENDALE, ARIZONA

LUKE AFB (KLUF)