

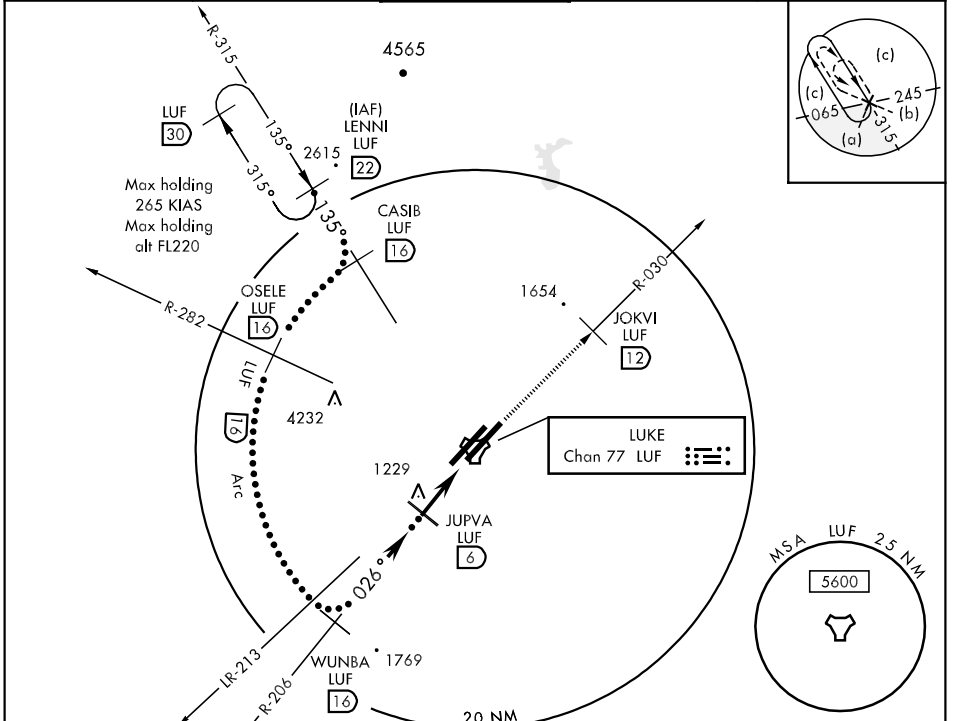
TACAN LUF Chan 77	APCH CRS 026°	Rwy Idg TDZE Arprt Elev 9904 1074 1085	JAL-321 [USAF]	LUKE AFB (KLUF)
-----------------------------	-------------------------	--	----------------	-----------------

▼ * When ALS inop, increase CAT CD RVR to 60 and vis to 1 1/4 miles, CAT E vis to 1 1/2 miles.
 ** Circling not authorized E of Rwy 3R-21L.

A1 ALSF-1

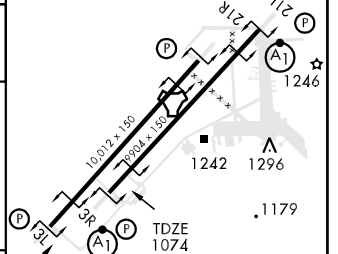
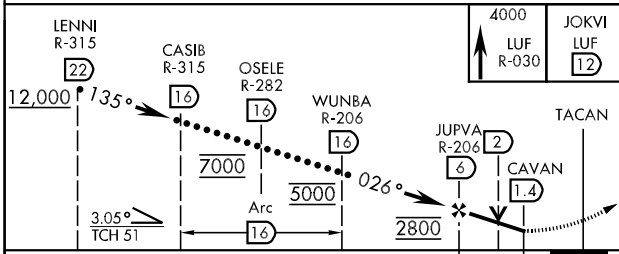
MISSED APPROACH: Track heading 030° to 4000, intercept LUF TACAN R-030 to JOKVI (LUF R-030/12 DME). Contact Luke APP CON.

ATIS ★ 134.925 269.9	LUKE APP CON 118.15 363.12	LUKE TOWER ★ 119.1 379.9	GND CON 133.175 335.8	CLNC DEL 126.25 273.475
--------------------------------	--------------------------------------	------------------------------------	---------------------------------	-----------------------------------



EMERG SAFE ALT 100 NM 16,200

ELEV 1085



CATEGORY	C	D	E
S-3R *	1500/40	426 (500-3/4)	1500/50 426 (500-1)
CIRCLING **	1560-1 1/2 475 (500-1 1/2)	1640-2 555 (600-2)	NOT AUTHORIZED

HIRL all Rwy

SW-4, 22 OCT 2009 to 19 NOV 2009

SW-4, 22 OCT 2009 to 19 NOV 2009