

TACAN LUF Chan 77	APCH CRS 205°	Rwy Idg 10,012 TDZE 1085 Arprt Elev 1085
-----------------------------	-------------------------	---

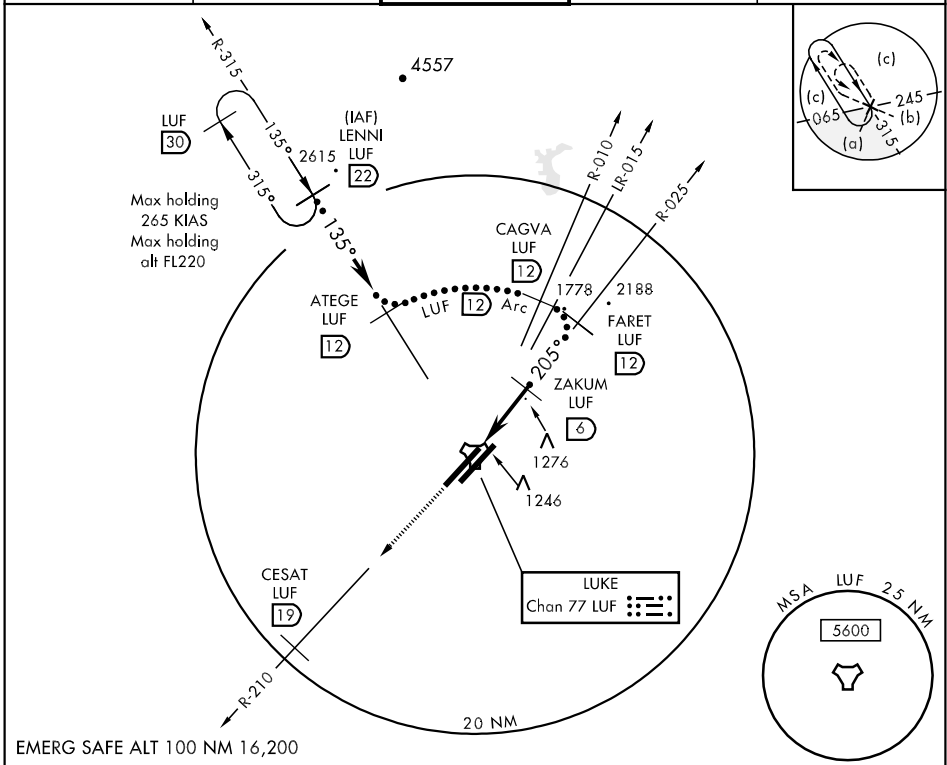
JAL-321 [USAF]

LUKE AFB (KLUF)

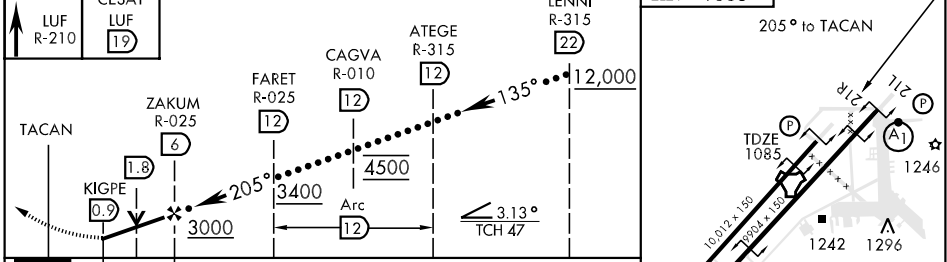
* Circling not authorized E of Rwy 3R-21L.

 MISSED APPROACH: Track heading 210° to 5000. Intercept LUF TACAN R-210 to CESAT (LUF R-210/19 DME). Contact LUKE APP CON.

ATIS ★ 134.925 269.9	LUKE APP CON 118.15 363.12	LUKE TOWER ★ 119.1 379.9	GND CON 133.175 335.8
			CLNC DEL 126.25 273.475



EMERG SAFE ALT 100 NM 16,200



CATEGORY	C	D	E
S-21R	1580-1¼ 495 (500-1¼)	1580-1½ 495 (500-1½)	1580-1¾ 495 (500-1¾)
CIRCLING *	1580-1½ 495 (500-1½)	1640-2 555 (600-2)	NOT AUTHORIZED



SW-4, 22 OCT 2009 to 19 NOV 2009

SW-4, 22 OCT 2009 to 19 NOV 2009