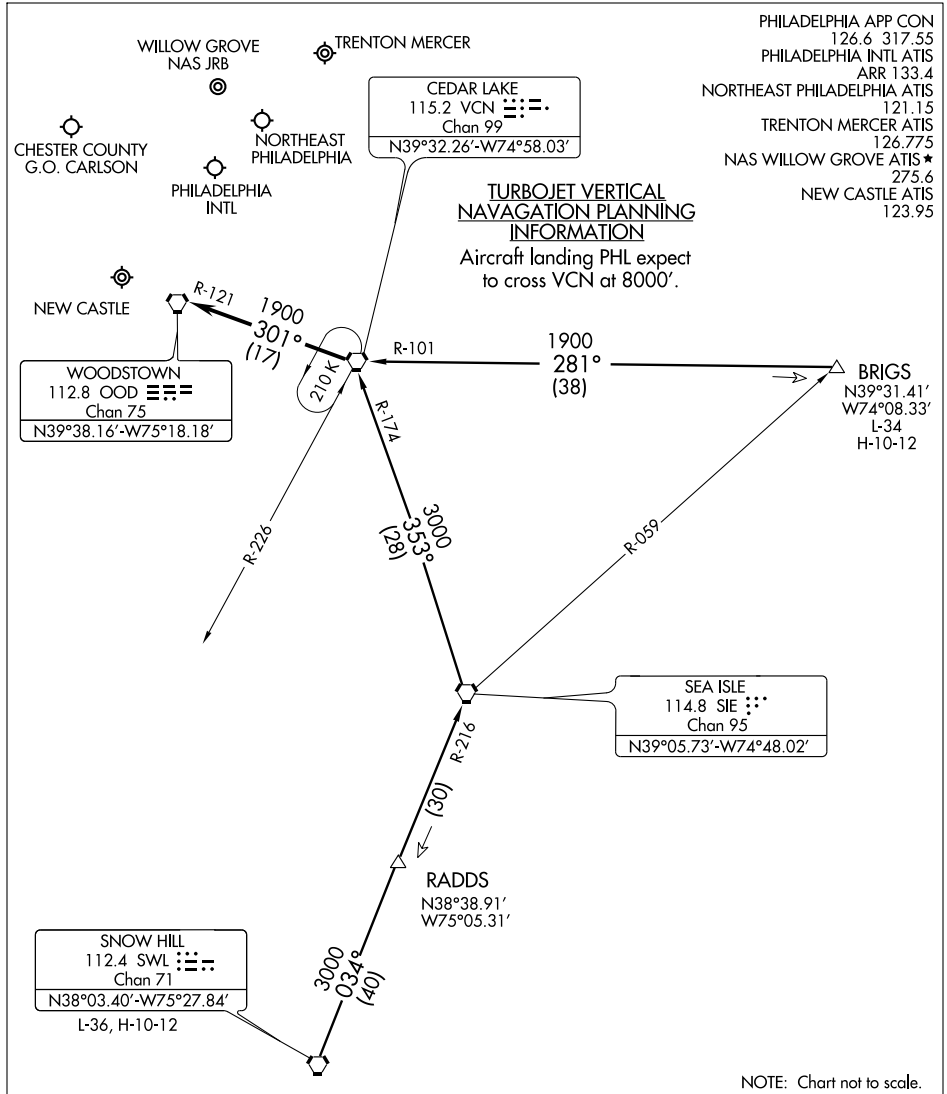


CEDAR LAKE EIGHT ARRIVAL

PHILADELPHIA, PENNSYLVANIA



NOTE: Chart not to scale.

BRIGS TRANSITION (BRIGS.VCN8): From over BRIGS INT via VCN R-101 to VCN VORTAC. Thence...

SNOW HILL TRANSITION (SWL.VCN8): From over SWL VORTAC via SWL R-034 and SIE R-216 to SIE VORTAC, then via the SIE R-353 and VCN R-174 to VCN VORTAC. Thence...

... From over VCN VORTAC:
 Turbojets expect radar vectors to final approach course.
 Non-Turbojets continue via the VCN R-301 and the OOD R-121 to OOD VORTAC; expect radar vectors to final approach course.

NE-4, 22 OCT 2009 to 19 NOV 2009

NE-4, 22 OCT 2009 to 19 NOV 2009

CEDAR LAKE EIGHT ARRIVAL

PHILADELPHIA, PENNSYLVANIA