

# RNAV (GPS) RWY 8

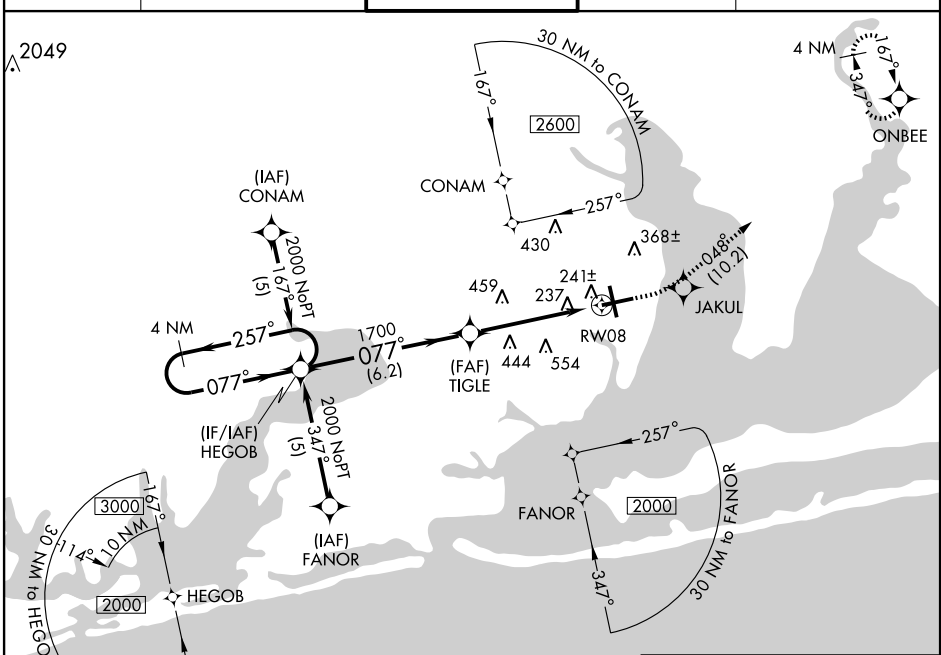
PENSACOLA RGNL (PNS)

WAAS CH <b>86219</b> <b>W08A</b>	APP CRS <b>077°</b>	Rwy Idg <b>7000</b> TDZE <b>95</b> Apr Elev <b>121</b>
--	------------------------	---

Baro-VNAV NA below -15°C (5°F).  
DME/DME RNP-0.3 NA.

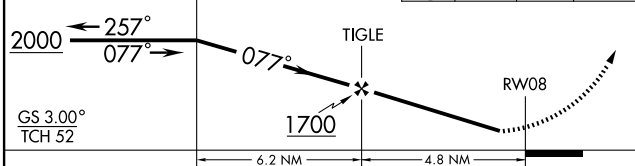
MISSED APPROACH: Climb to 2000 direct JAKUL and via 048° track to ONBEE and hold.

ATIS <b>121.25</b>	PENSACOLA APP CON <b>119.0 269.375</b>	PENSACOLA TOWER ★ <b>119.9 (CTAF) 0 257.8</b>	GND CON <b>121.9 348.6</b>	CLNC DEL <b>123.725 256.875</b>
-----------------------	---	--	-------------------------------	------------------------------------

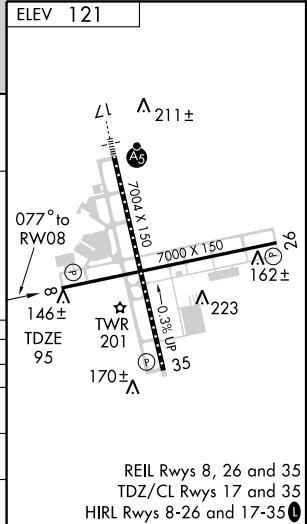


SE-3, 22 OCT 2009 to 19 NOV 2009

SE-3, 22 OCT 2009 to 19 NOV 2009



CATEGORY	A	B	C	D
LPV DA	350-1 255 (300-1)			
LNAV/VNAV DA	540-1½ 445 (500-1½)			
LNAV MDA	720-1 625 (600-1)	720-1¾ 625 (600-1¾)	720-2 625 (600-2)	
CIRCLING	720-1½ 599 (600-1½)	720-1¾ 599 (600-1¾)	720-2 599 (600-2)	



REIL Rwy 8, 26 and 35  
TDZ/CL Rwy 17 and 35  
HIRL Rwy 8-26 and 17-35