


RNAV (GPS) RWY 7

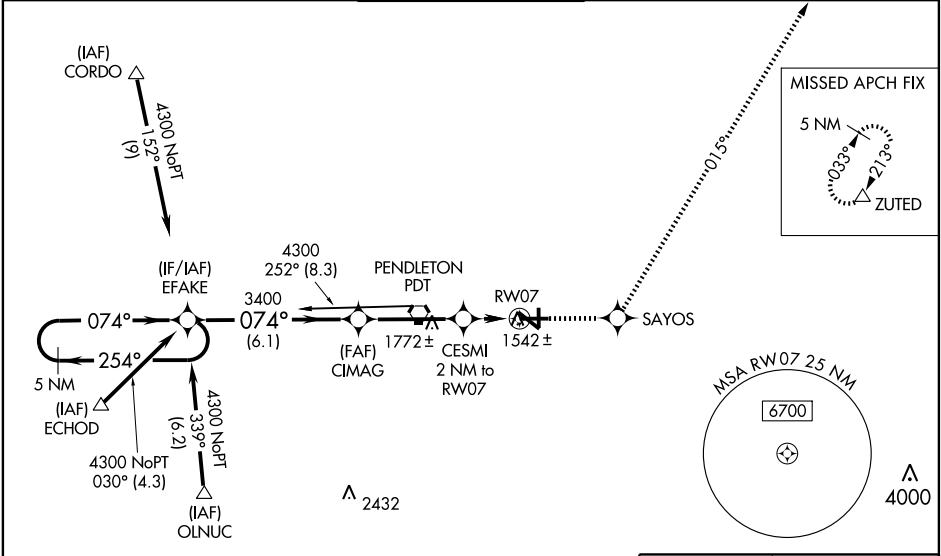
PENDLETON/ EASTERN OREGON RGNL AT PENDLETON (P'DT)

WAAS CH 73012 W07A	APP CRS 074°	Rwy Idg TDZE 1486 Apt Elev 1497
--	------------------------	---

⚠ Inoperative table does not apply to LNAV/VNAV all Cats.
⚠ For uncompensated Baro-VNAV systems, LNAV/VNAV NA below -17°C (2°F) or above 46°C (114°F). DME/DME RNP-0.3 NA. Visibility reduction by helicopters NA. VDP and Baro-VNAV NA when using Walla Walla altimeter setting. When local altimeter setting not received, use Walla Walla altimeter setting and increase all DA/MDA 120 feet, and all visibilities ¾ mile. Inoperative table does not apply.

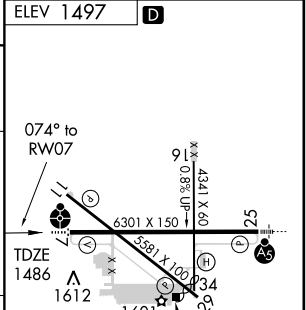
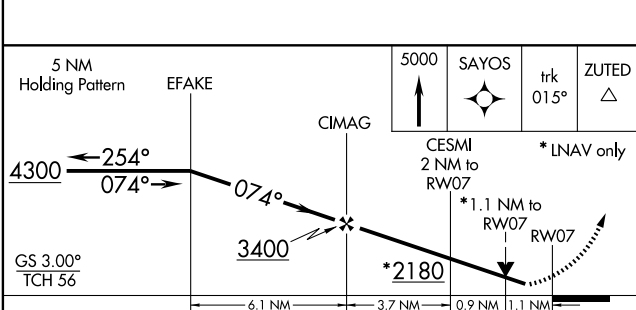
ODALS

 MISSED APPROACH: Climb to 5000 direct SAYOS and via track 015° to ZUTED and hold.

ASOS 118.325	CHINOOK APP CON* 133.15 379.15	PENDLETON TOWER* 119.7 (CTAF) 257.8	GND CON 121.9 257.8	UNICOM 122.95
------------------------	--	---	-------------------------------	-------------------------

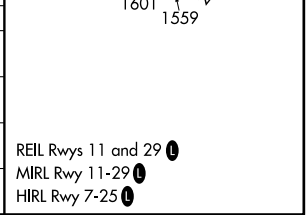


NW-1, 22 OCT 2009 to 19 NOV 2009

NW-1, 22 OCT 2009 to 19 NOV 2009



CATEGORY	A	B	C	D
LPV DA		1736-¾	250 (300-¾)	
LNAV/VNAV DA		1834-1¼	348 (400-1¼)	
LNAV MDA		1880-¾	394 (400-¾)	1880-1¼ 394 (400-1¼)
CIRCLING	1920-1 423 (500-1)	1960-1 463 (500-1)	1960-1½ 463 (500-1½)	2060-2 563 (600-2)



RNAV (GPS) RWY 7