

# RNAV (GPS) RWY 11

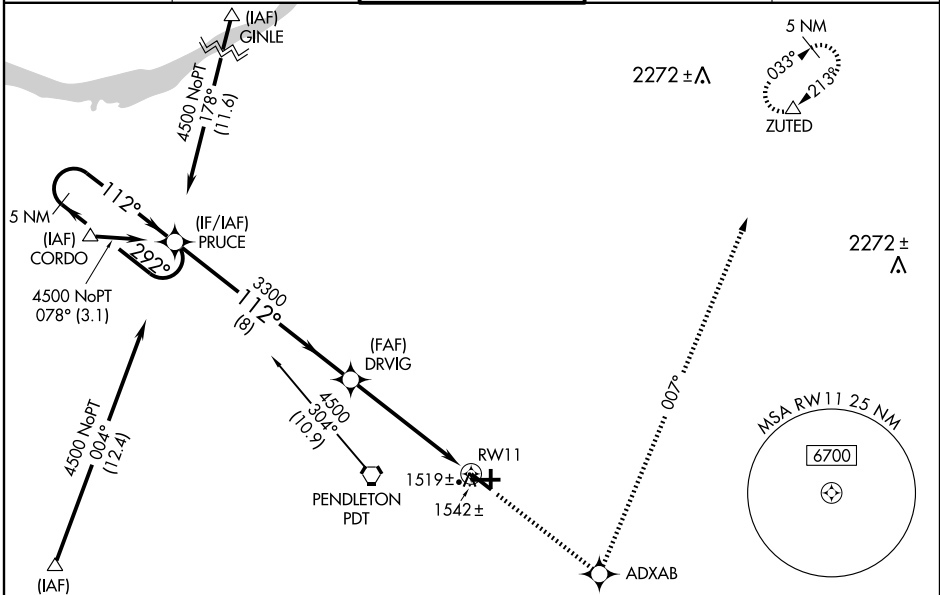
PENDLETON/ EASTERN OREGON RGNL AT PENDLETON (PDT)

WAAS CH <b>82712</b> <b>W11A</b>	APP CRS <b>112°</b>	Rwy Idg TDZE <b>5581</b> <b>1487</b>	Apt Elev <b>1497</b>
--	------------------------	--	-------------------------

**⚠** For uncompensated Baro-VNAV systems, LNAV/VNAV NA below -17°C (2°F) or above 46°C (114°F). DME/DME RNP-0.3 NA.  
**⚠** When local altimeter setting not received, use Walla Walla altimeter setting: increase all DA/MDA 120 feet and visibility LPV all Cats ¼ mile, LNAV/VNAV all Cats ½ mile, LNAV Cats C and D ¼ mile and Circling Cat D ¼ mile. VDP and Baro-VNAV NA when using Walla Walla altimeter setting.

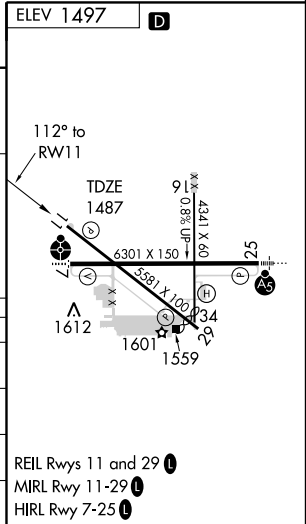
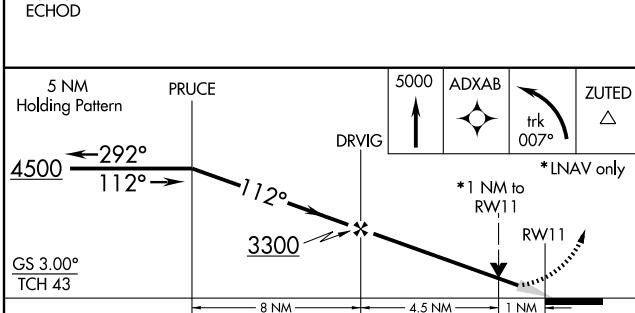
MISSED APPROACH: Climb to 5000 direct ADXAB and left turn via track 007° to ZUTED and hold.

ASOS <b>118.325</b>	CHINOOK APP CON * <b>133.15 379.15</b>	PENDLETON TOWER * <b>119.7 (CTAF) 257.8</b>	GND CON <b>121.9 257.8</b>	UNICOM <b>122.95</b>
------------------------	---	--	-------------------------------	-------------------------



NW-1, 22 OCT 2009 to 19 NOV 2009

NW-1, 22 OCT 2009 to 19 NOV 2009



CATEGORY	A	B	C	D
LPV DA	1737-1 250 (300-1)			
LNAV/VNAV DA	1850-1¼ 363 (400-1¼)			
LNAV MDA	1860-1 373 (400-1)		1860-1¼ 373 (400-1¼)	
CIRCLING	1920-1 423 (500-1)	1960-1 463 (500-1)	1960-1½ 463 (500-1½)	2060-2 563 (600-2)

# RNAV (GPS) RWY 11