

PEMBINA, NORTH DAKOTA

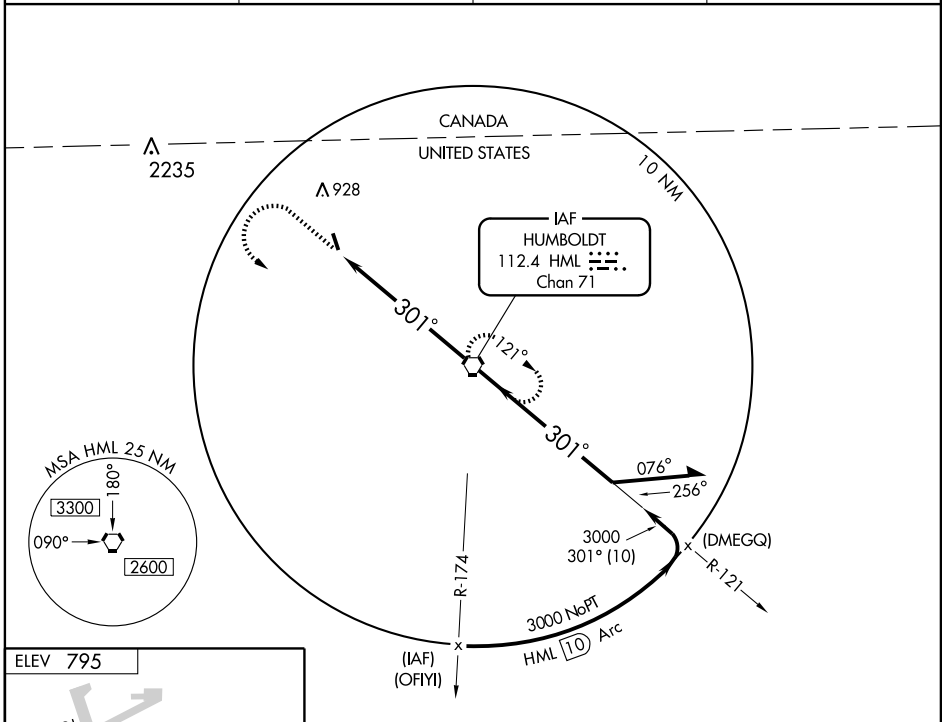
AL-315 (FAA)

VOR or GPS RWY 33

PEMBINA MUNI (PMB)

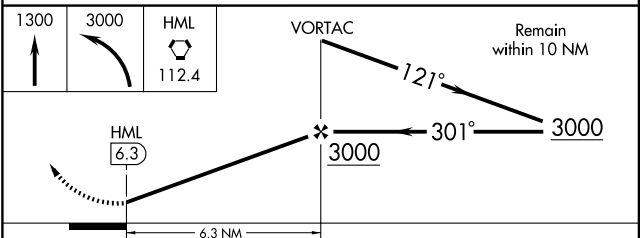
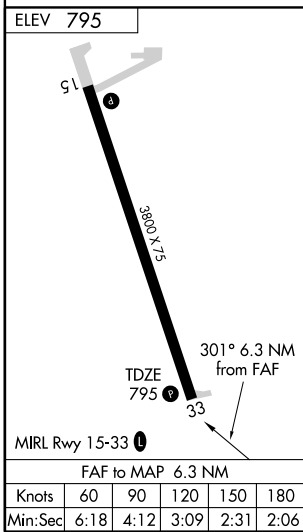
VORTAC HML 112.4 Chan 71	APP CRS 301°	Rwy Idg TDZE 795 Apt Elev 795
--	------------------------	---

<p>NA Obtain local altimeter setting on CTAF; when not received use Hallock altimeter setting.</p>		<p>MISSED APPROACH: Climb to 3000 then climbing left turn to 3000 direct HML VORTAC and hold.</p>	
HALLOCK AWOS-3 126.475	MINNEAPOLIS CENTER 132.15 269.6	PRINCETON RADIO 122.1R	UNICOM 122.8 (CTAF) 0



NC-1, 22 OCT 2009 to 19 NOV 2009

NC-1, 22 OCT 2009 to 19 NOV 2009



CATEGORY	A	B	C	D
S-33	1180-1			385 (400-1)
CIRCLING	1200-1 405 (500-1)	1300-1 505 (600-1)	1300-1½ 505 (600-1½)	NA
HALLOCK ALTIMETER SETTING MINIMUMS				
S-33	1220-1	425 (500-1)	1220-1¼ 425 (500-1¼)	NA
CIRCLING	1260-1 465 (500-1)	1360-1 565 (500-1)	1360-1½ 565 (500-1½)	NA

PEMBINA, NORTH DAKOTA
Amdt 6B 07354

48°57'N-97°14'W

VOR or GPS RWY 33

PEMBINA MUNI (PMB)