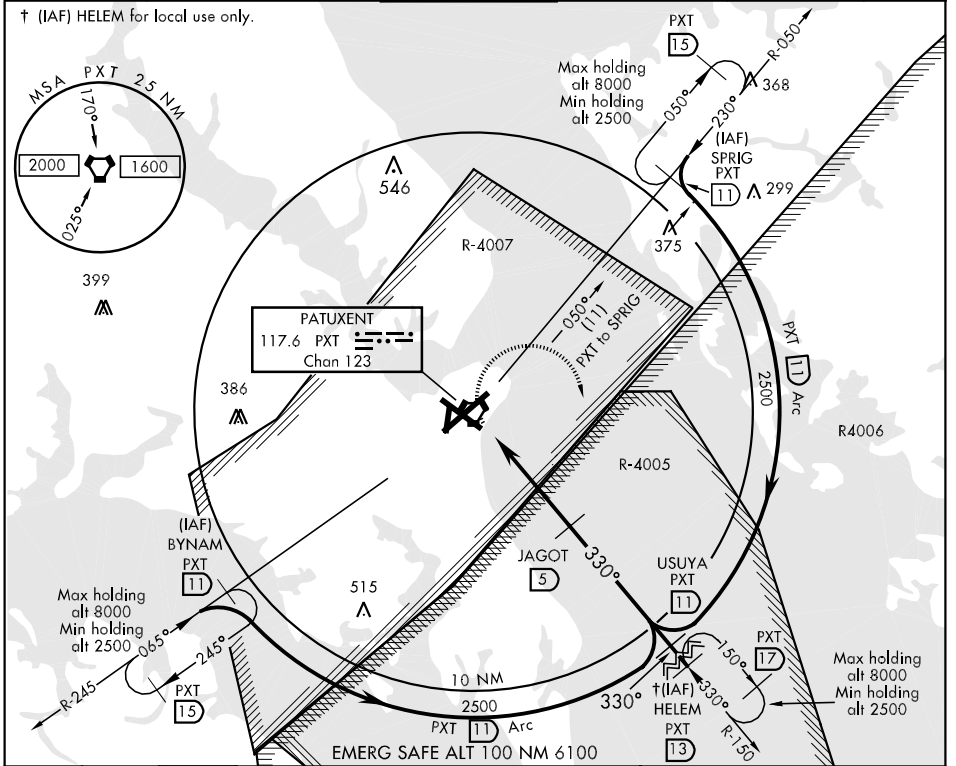


VORTAC PXT <b>117.6</b> Chan <b>123</b>	APCH CRS <b>330°</b>	Rwy Idg TDZE <b>18</b> Arpt Elev <b>39</b>	<b>9742</b>
---	-------------------------	--	-------------

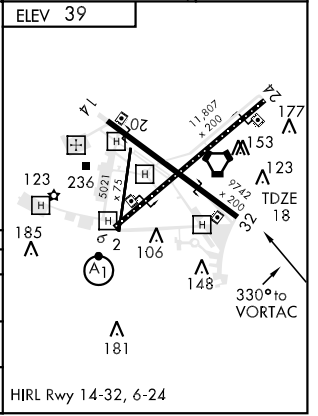
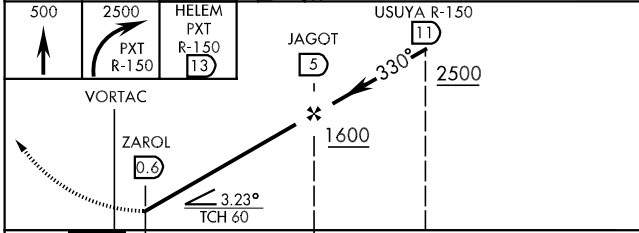
**▼ MISSED APPROACH:** Climb to 500, then climbing right turn to 2500 to intercept the PXT R-150 to HELEM and hold.

ATIS ★ <b>276.2</b>	PATUXENT APP/DEP CON <b>121.0 250.3</b>	PATUXENT TOWER ★ <b>123.7 343.65</b>	GND CON <b>120.6 336.4</b>	CLNC DEL <b>135.2 384.4</b>	ASR/PAR
------------------------	--	---	-------------------------------	--------------------------------	---------



NE-3, 22 OCT 2009 to 19 NOV 2009

NE-3, 22 OCT 2009 to 19 NOV 2009



CATEGORY	A	B	C	D
S-32	400-1	382	(400-1)	400-1¼ 382 (400-1¼)
CIRCLING	540-1 501 (600-1)	560-1 521 (600-1)	560-1½ 521 (600-1½)	600-2 561 (600-2)
S-PAR 32	268-1	250	(300-1)	GS 3.0°