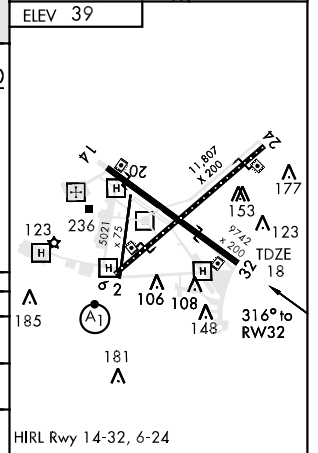
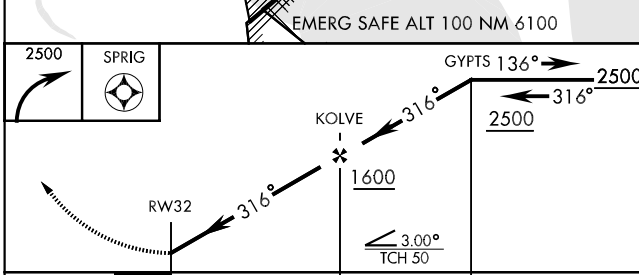
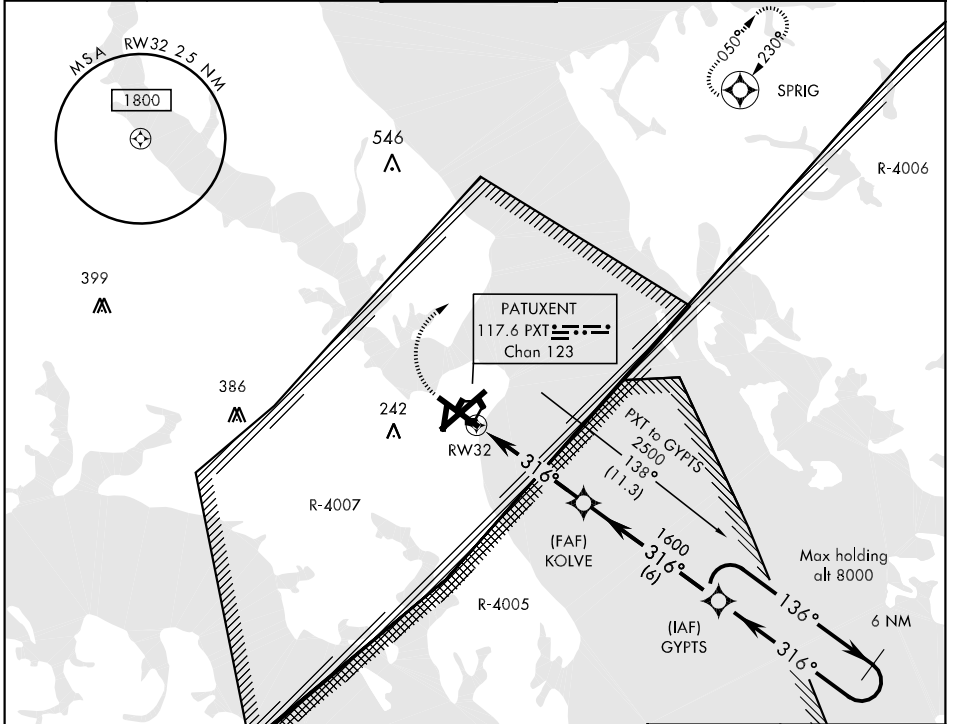


APCH CRS 316°	Rwy Idg 9742
	TDZE 18
	Arprt Elev 39

▼ DME/DME RNP-0.3 NA.

MISSED APPROACH: Climbing right turn to 2500 direct SPRIG and hold.

ATIS ★ 276.2	PATUXENT APP/DEP CON 121.0 250.3	PATUXENT TOWER ★ 123.7 343.65	GND CON 120.6 336.4	CLNC DEL 135.2 384.4	ASR/PAR
------------------------	--	---	-------------------------------	--------------------------------	---------



CATEGORY	A	B	C	D
RNAV MDA	420-1	402 (500-1)	420-1½	402 (500-1½)
CIRCLING	540-1 501 (600-1)	560-1 521 (600-1)	560-1½ 521 (600-1½)	600-2 561 (600-2)
S-PAR 32	268-1	250 (300-1)	GS 3.0°	

NE-3, 22 OCT 2009 to 19 NOV 2009

NE-3, 22 OCT 2009 to 19 NOV 2009