

AL-314 [USN] PATUXENT RIVER NAS (TRAPNELL FIELD) (KNKH)

NDB NHK 400	APCH CRS 066°	Rwy Idg 11,807 TDZE 39 Arpt Elev 39
-----------------------	-------------------------	--

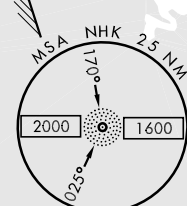
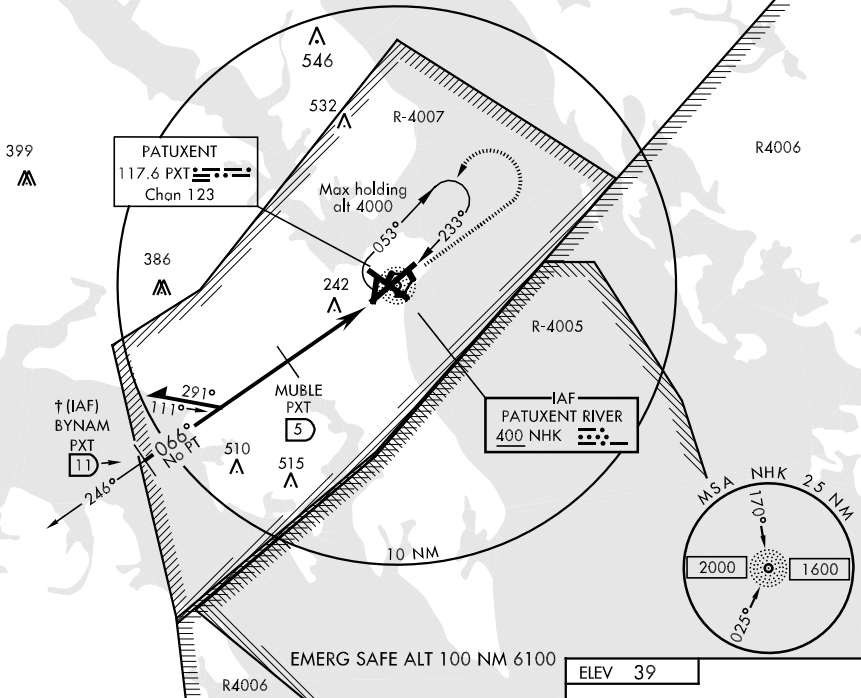
▼ *When ALS inop, increase vis CAT AB to 1 mile, CAT C to 1¼ miles, CAT D to 1½ miles.
 **When ALS inop, increase vis CAT ABCD to ½ mile.



MISSED APPROACH: Climb to 1500 via NHK 066° bearing, then climbing left turn to 2500 direct NHK NDB and hold.

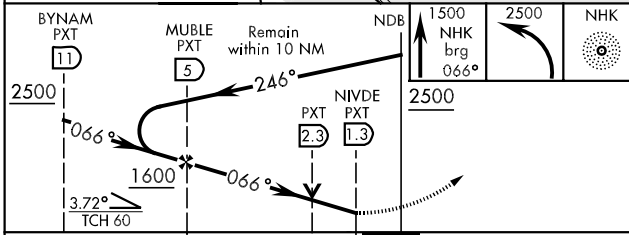
ATIS * 276.2	PATUXENT APP/DEP CON 121.0 250.3	PATUXENT TOWER * 123.7 343.65	GND CON 120.6 336.4	CLNC DEL 135.2 384.4	ASR/PAR
------------------------	--	---	-------------------------------	--------------------------------	---------

† RADAR required to use IAF BYNAM.



NE-3, 22 OCT 2009 to 19 NOV 2009

NE-3, 22 OCT 2009 to 19 NOV 2009



ELEV 39

HRL Rwy 14-32, 6-24
FAF to MAP 3.7 NM

Knots	60	90	120	150	180
Min:Sec	3:42	2:28	1:51	1:29	1:14

CATEGORY	A	B	C	D
S-6 *	560-½ 521 (600-½)		560-1 521 (600-1)	560-1¼ 521 (600-1¼)
CIRCLING	560-1 521 (600-1)		560-1½ 521 (600-1½)	600-2 561 (600-2)
S-PAR 6 **	139-¼	100	(100-¼) GS 3.0°	