

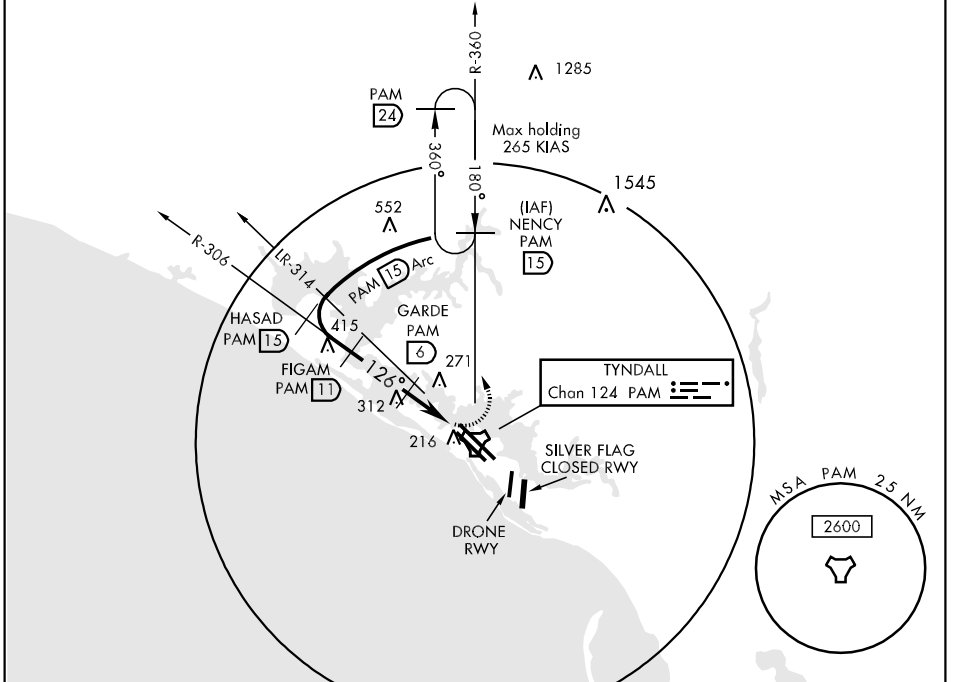
TACAN PAM Chan 124	APCH CRS 126°	Rwy Idg 10,004 TDZE 14 Arprt Elev 17	AL-312 [USAF]	TYNDALL AFB (KPAM)
------------------------------	-------------------------	---	---------------	--------------------

▼ * When ALS inop, increase CAT AB RVR to 50 and vis to 1 mile, CAT CD vis to 1½ miles.

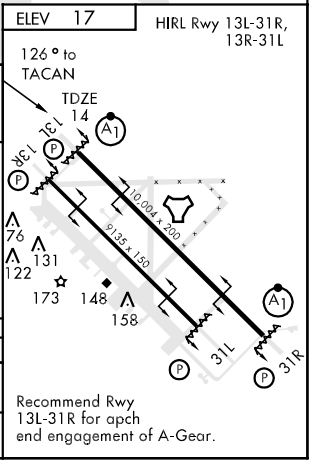
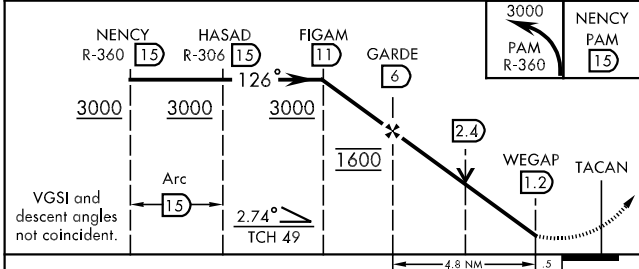
 ALSF-1

 MISSED APPROACH: Climbing left turn to 3000 direct NENCY (PAM R-360/15 DME) and hold.

ATIS ★ 254.4	TYNDALL APP CON 125.2 392.1 (N abv 5000') 119.1 379.3 (N blw 5000') 124.15 307.8 (S abv 5000') 119.775 338.35 (S blw 5000')	TYNDALL TOWER ★ 133.95 263.15	GND CON 121.9 259.3	CLNC DEL 118.05 289.4	ASR/PAR
------------------------	---	---	-------------------------------	---------------------------------	---------



EMERG SAFE ALT 100 NM 3300



CATEGORY	A	B	C	D
S-13L *	520/24 506 (600-½)		520/50 506 (600-1)	
CIRCLING	560-1 543 (600-1)		560-1½ 543 (600-1½)	580-2 563 (600-2)

SE-3, 22 OCT 2009 to 19 NOV 2009

SE-3, 22 OCT 2009 to 19 NOV 2009