

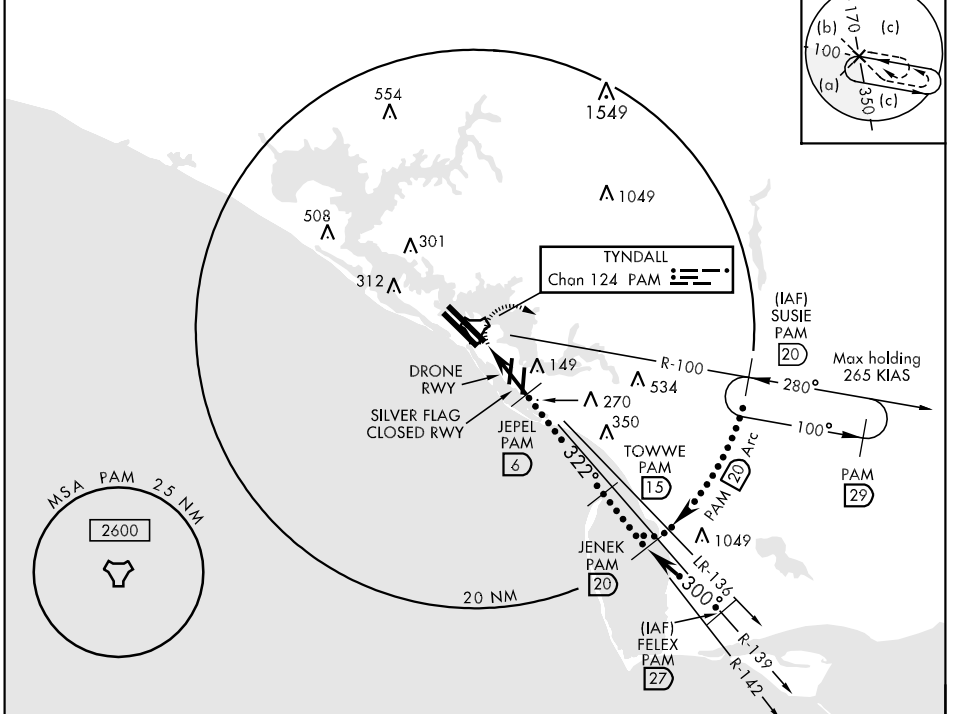
TACAN PAM Chan <b>124</b>	APCH CRS <b>322°</b>	Rwy Idg <b>10,004</b> TDZE <b>14</b> Arpt Elev <b>17</b>	JAL-312 [USAF]	TYNDALL AFB (KPAM)
------------------------------	-------------------------	--	----------------	--------------------

\* When ALS inop, increase CAT C RVR to 60 and vis to 1¼ miles, CAT DE vis to 1½ miles.
 

 ALSF-1  

 MISSED APPROACH: Climbing right turn to 3000 direct SUSIE (PAM R-100/20 DMÉ) and hold.

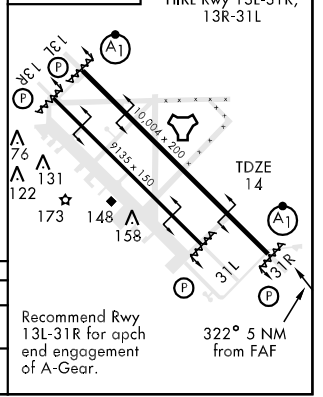
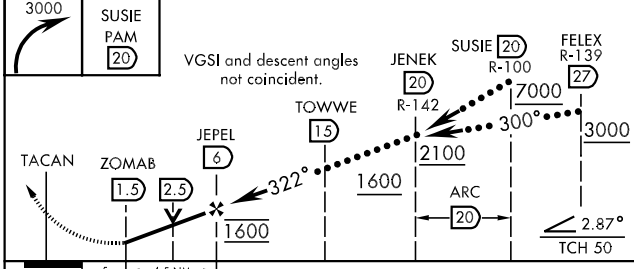
ATIS ★ <b>254.4</b>	TYNDALL APP CON <b>125.2 392.1</b> (N abv 5000') <b>119.1 379.3</b> (N blw 5000') <b>124.15 307.8</b> (S abv 5000') <b>119.775 338.35</b> (S blw 5000')	TYNDALL TOWER ★ <b>133.95 263.15</b>	GND CON <b>121.9 259.3</b>	CLNC DEL <b>118.05 289.4</b>	ASR/PAR
------------------------	---	---	-------------------------------	---------------------------------	---------



SE-3, 22 OCT 2009 to 19 NOV 2009

SE-3, 22 OCT 2009 to 19 NOV 2009

EMERG SAFE ALT 100 NM 3300



CATEGORY	C	D	E
S-31R *	460/40 446 (500-34)	460/50	446 (500-1)
CIRCLING	560-1½ 543 (600-1½)	580-2 563 (600-2)	620-2¼ 603 (700-2¼)

